



The History of Ewyas Lacy

Document Record

Held at: National Archives

Reference: AE/1-4

Source: Original Survey Particulars

Title: Digital Archive: Royal Commission on Ancient and Historical Monuments - Photographs of original survey particulars, Part 10 of 13

Place name: Craswall, Llanveynoe, Longtown, Michaelchurch Escley

Date: 1920s

Description:

Part 10: Longtown

This Digital Archive collection contains photographs of surviving parts of the initial surveys of Craswall, Michaelchurch Escley, Llanveynoe and Longtown carried out in the 1920's by the Royal Commission on Ancient and Historical Monuments. They comprise photographs, hand written survey notes and the annotated maps the surveyors used, which are held in the National Archives and formed the basis for the eventual RCAHM Reports on the buildings and structures in the parishes.

The photographs have been made available by Chris Hodges, to whom we are most grateful.

ELSG Ref RCAHM Records: Longtown

61	Great Bilbo 1
62	Great Bilbo 2
63	Great Bilbo 3
64	Great Bilbo Photo1
65	Great Bilbo Photo2
66	Great Bilbo Photo3
67	Great Bilbo Photo4
68	House and shop [No 2]
69	House and shop [No 2] Photo1
70	House and shop [No 2] Photo2
71	House [No 3] 1
72	House [No 3] 2
73	House [No 3] Photo1



The History of Ewyas Lacy

Document Record

- 74 House [No 1]
- 75 House [No 1] Photo
- 76 Pen-y-dre
- 77 Pen-y-dre Photo
- 78 Greyhound Inn 1
- 79 Greyhound Inn 2
- 80 Greyhound Inn Photo1
- 81 Greyhound Inn Photo2
- 82 Greyhound Inn Photo3
- 83 Post Office 1
- 84 Post Office 2
- 85 Post Office Photo
- 86 House [No 5]
- 87 House [No 5] Photo
- 88 Upper Pont-hendre 1
- 89 Upper Pont-hendre 2
- 90 Upper Pont-hendre Photo

The History of Ewyas Lacy

Document Record

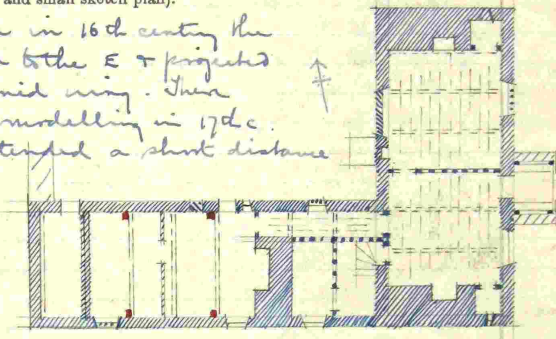
RECORD CARD FOR SECULAR MONUMENTS.

(N.B.—Detail of special interest is to be entered here, but described fully on a separate card.)

1. **Name and situation of Monument** (with owner's Name and Address). *Great Bilbo*
2 1/2 mile E.N.E. of Llandovery Church.

2. **General appearance:** (a) No. of storeys. *E wing 2 attic. Remainder 1 attic.*
(b) Building materials. *Rubble stone.*
(c) Roofs. *Stone slates.*


3. **Historical development** (with dates and small sketch plan).
A 15th c. house. Late in 16th century the house was extended to the E & projected to N forming a 2 storied wing. There was some slight re-modelling in 17th c. & the house was extended a short distance to the W.



4. **Special features** (if any).

5. **Elevations:** (Beginning with the main front, and mentioning, in the following order:—(a) Walls; (b) Gables; (c) Doors; (d) Windows; (e) Chimneys; (f) Rainwater heads and pipes.)

West Elev. *Gabled, tree-built. E wing has on ground floor a blocked window & one 3 light transomed window with mullion & frame's ends chamfered & spliced type & on 1st floor on two 4 light casements with similar frames. Beneath 1st floor window is a continuous 'pent-house' roof with stop chamfered & shaped brackets.*



North Elev. *On ground floor is a blocked window & one partially blocked with old 4 light diamond mullioned frame with mullion missing. Wing is gabled & shaft of plate re-built. On ground floor is a blocked window & one partially blocked. On 1st floor is window with old wood frame & to attic an 2 boarded up casements with chamfered frames.*

East Elev. *Projecting 2 storied porch, formerly timber framed with upper floor projecting on all three sides & supported on shaped brackets. It has now had its sides built in in rubble stone walling & the timber framing of upper story covered with modern boarding. In front two timber posts with shaped brackets an exposed between same is a segmental arched head from which at its apex projects a stop chamfered cantilever supporting the overhanging upper story. Inside porch along both side walls is oak boarded seats.*

6. **Grounds:** (a) Gardens; (b) Outbuildings; (c) Statuary, sundials, etc.
It has now had its sides built in in rubble stone walling & the timber framing of upper story covered with modern boarding. In front two timber posts with shaped brackets an exposed between same is a segmental arched head from which at its apex projects a stop chamfered cantilever supporting the overhanging upper story. Inside porch along both side walls is oak boarded seats.

(see continuation sheet)

P.T.O.

County. *Herefordshire* Parish. *Longton* Sub-Commission. *Seven* No. of Monument. *7*

(89,102). Wt. 33, 349-47. 500. 12/13. A.&E.W.
(97,153). " 5021-53. 6000. 5/14. "

The History of Ewyas Lacy

Document Record

7. Interior: (Disposition of rooms, if original, giving fittings as they occur (see list), beginning with the ground floor, following with the basement, and working up to the attic; staircases in the same manner.)

Fittings:
(remainder list)

- (1) Ceilings.
- (2) Cupboards (etc.).
- (3) Doors and Overdoors.
- (4) Fireplaces and Mantel pieces.
- (5) Glass.
- (6) Paintings.
- (7) Paneling.
- (8) Parquet and Floors.
- (9) Plasterwork on internal walls.
- (10) Sinks and basins (toilet).
- (11) Stoves.
- (12) Tapestries.
- (13) Miscellaneous (e.g. mirrors, screens, locks, etc.).

Ceilings of ground floor rooms in wing have exposed moulded beams, gables and stepped chamfered joists here in more room showing after steps while here in 3 room have plain steps. Cupboards and walls ground room an exposed moulded wall plate in gable end. Between these rooms in a paneled partition with sunk moulded heavy framing containing doors with shaped sub-head to frame, the door itself being a 4 paneled door with similar but smaller moulding to that of partition. The cupboard in 3 room has paneled front & 6 paneled door similar moulding but smaller in size than that of partition described above. The doorway to passage from 3 room has square moulded frame with recessed sub-head with plain chamfered edge. The doorway to basin has moulded frame, the moulding not being mitred but angles, & a segmental sub-head. In passage in older portion of house is a heavy paneled partition with narrow panels in air length from floor to ceiling & step chamfered joists & top rail. In same is a doorway with shaped sub-head. Ceiling joists in passage are exposed & then in exposed ceiling beams to ground floor rooms in other part of the house in which also are two exposed chandeliers.

East Elev. cuts. The door is battened, has exposed heads on hinges on a pair of steps hinges of type and a wood frame with square moulded head square moulding not being mitred. Above square head is a segmental sub-head. The sill rough parts heads of original planing are exposed again. Modern stone side walls, topped with a step chamfered beam to ceiling. North of the porch on ground floor is a 4 light transomed window uniform with that on W elevation & two 4 light casements on 1st floor. On S side of porch the ground floor has had modern frame inserted but on 1st floor is a 4 light casement uniform with that on W side of porch. Along the whole of this elevation on side side of porch is a lead-lined roof uniform with that on W elevation.

South Elev. at E end wing is gabled above rectangular stone chimney base surmounted by 2 modern diagonal brick shafts. On ground floor here is a small window to right hand of the staircase with partition gird wood frame. The other portion of the house has a blocked window & partly abutted wall on ground floor a 4 light diamond paned moulded window. Attic to wing has two blocked windows. The central chimney stack is rectangular in plan except for a few courses of stone immediately above roof line, remainder has been re-built in brick bats.

8. Condition: E wing good - old house poor.

9. Visited by (with dates): A.T. Phillips. Oct. 1927

10. Bibliography:

11. No. of Ordnance Sheet (6-in.): XLIV. 5.W

12. Signature of Investigator: A.T. Phillips

(85,683) W455,094-42 1850, 1873, A&E.W. (102,676) - 17,081-57, 2000, 9/14

The History of Ewyas Lacy

Document Record

RECORD CARD FOR SECULAR MONUMENTS
(N.B.—Detail of special interest is to be entered here, but described fully on a separate card.)

1. Name and situation of Monument (with owner's Name and Address). *Barn at Great Billo 35 yds. N.W. of house.*

2. General appearance: (a) No. of stories.
(b) Building materials. *Timber frame on stone plinth.*
(c) Roofs. *Stone slate.*

3. Historical development (with dates and small sketch plan).
A 17th c. barn. In modern times additions have been built on against W, E, & S sides.

4. Special features (if any).

5. Elevations: (Beginning with the main front, and mentioning, in the following order—(a) Walls; (b) Gables; (c) Doors; (d) Windows; (e) Chimneys; (f) Rainwater heads and pipes.)
The barn is largely concealed by modern additions. When visible the framing is covered with modern weather boarding. It is gabled at E.W. ends. There is a double door on both N & S sides, the head of latter coming above eaves level showing 'beasts' lower head.

Internally it is divided into 3 bays by two timbers of type →

6. Grounds: (a) Gardens; (b) Outbuildings; (c) Statuary, sundials, etc.

03.102. W.33.240—11. 500. 1013. A.R.W.
(97.132). — 5521—52. 6900. 5/14.

P.T.O.

The History of Ewyas Lacy

Document Record



The History of Ewyas Lacy

Document Record



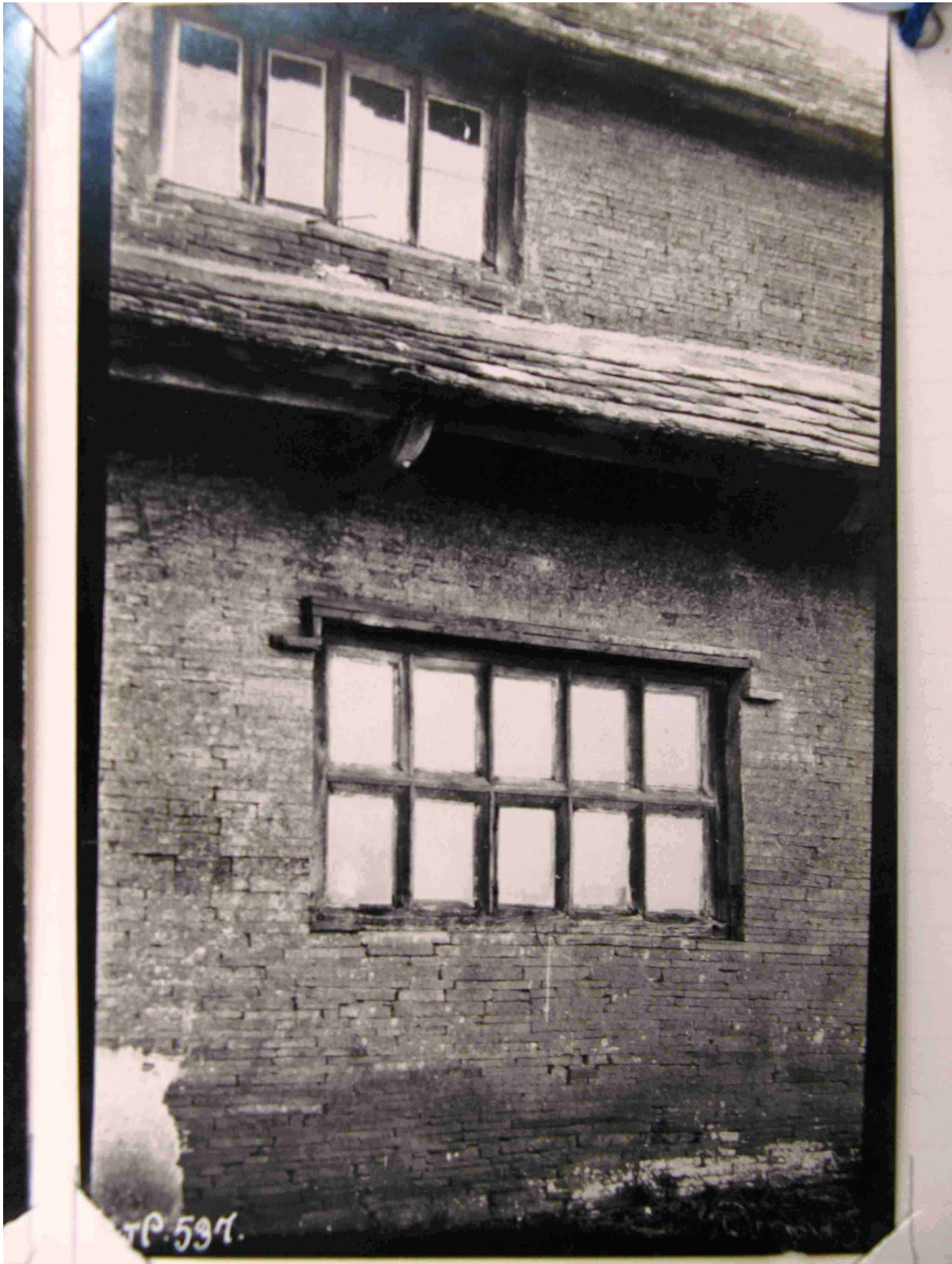
The History of Ewyas Lacy

Document Record



The History of Ewyas Lacy

Document Record



The History of Ewyas Lacy

Document Record

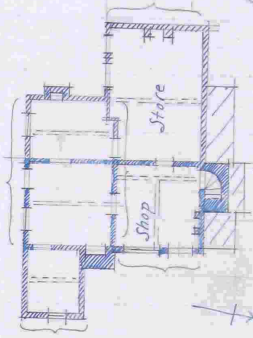
B.

RECORD CARD FOR SECULAR MONUMENTS.
(N.B.—Detail of special interest is to be entered here, but described fully on a separate card.)

1. **Name and situation of Monument** (with owner's Name and Address). *House & Shop (N.2)*
12 yds ESE of Church.

2. **General appearance:** (a) No. of storeys. *2.*
(b) Building materials. *Rubble stone walls.*
(c) Roofs. *Stone slates*

3. **Historical development** (with dates and small sketch plan).
A 17th c. house which has been so much re-modelled & re-roofed during the 18th c. as to make it difficult to trace original plan. It is however probable that the shop room & gable are 17th c. as also the projection to the E—though a few years later—while the stone room



4. **Special features** (if any). *on its S side was probably added early in 18th c.*

5. **Elevations:** (Beginning with the main front, and mentioning, in the following order:—(a) Walls; (b) Gables; (c) Doors; (d) Windows; (e) Chimneys; (f) Rainwater heads and pipes.)


East Elev. Rubble stone. Two gables with exposed timbers between them a rectangular outside chimney stack. The projecting portion to S. has on ground floor a 2 light window with wood frame & mullion the frame & mullion being plain & the timber gables & the more northerly gable is timber framed & plastered over.

S. Elev. Rubble stone. Gable.

W. Elev. Rubble stone. Northern projection gabled. Has square stone chimney shaft. Southern portion has rectangular stone outside stack.

N. Elev. Rubble. Projecting bay for staircase. largely concealed by modern lean-to roofed addition.

6. **Grounds:**



P.T.O.

County. *Herefordshire*
Parish. *Longtown*
Sub-Commission. *Severn*
No. of Monument. *83*

(89,102). Wt. 53,349—47. 500. 12/13. A.&E.W.
(97,153). " 5621—53. 8000. 5/14. "



The History of Ewyas Lacy

Document Record



The History of Ewyas Lacy

Document Record



The History of Ewyas Lacy

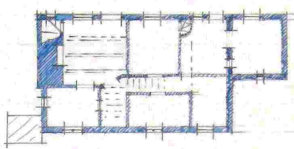
Document Record

B. RECORD CARD FOR SECULAR MONUMENTS.
(N.B.—Detail of special interest is to be entered here, but described fully on a separate card.)

1. Name and situation of Monument (with owner's Name and Address). *House No 3.
12 yds S.W of Church.*

2. General appearance: (a) No. of storeys. *1 attic*
(b) Building materials. *Rubble stone*
(c) Roofs. *Modern slate & stone slates to projection at N.W end.*

3. Historical development (with dates and small sketch plan).
A 17th c. house. Minor alterations & remodelling have taken place from time to time since then.



4. Special features (if any).

5. Elevations: (Beginning with the main front, and mentioning, in the following order:—(a) Walls; (b) Gables; (c) Doors; (d) Windows; (e) Chimneys; (f) Rainwater heads and pipes.)

N.E. Elev. On ground floor of house are remains of chamfered stone joints, cells head of two slight windows of which mullions are now missing & modern wood frame have been inserted. There are 2 dormer windows. On ground floor of N.W projection is block ^{light} window with chamfered stone head, joints & sill. South-East ground wood door frame are remains of a stop chamfered stone door jamb.

N.W. Elev. Gable to both house & extension. In gable of house at attic level is one light window with chamfered stone head, joints & sill.

S.W. Elev. 2 dormers.

S.E. Elev. Gabled. Rectangular stone outside stack the roof of gable being carried over same on S.W side while S.E side of stack projects in front of house face & has a weathered side.

6. Grounds: (a) Gardens; (b) Outbuildings; (c) Statuary, sundials, etc.

County. *Herefordshire* Parish. *Long Crum* Sub-Commission. *Secular* No. of Monument. *9*

P.T.O.

(80,102). Wt. 33, 249—47. 500. 12/13. A.&E.W.
(97,153). " 5821—53. 6000. 5/14. "

The History of Ewyas Lacy

Document Record

7. **Interior :** (Disposition of rooms, if original, giving fittings as they occur (see list), beginning with the ground floor, following with the basement, and working up to the attics ; staircases in the same manner.)

Fittings :

(Reminder list).

- (1) Ceilings.
- (2) Cupboards (fixed).
- (3) Doors and Overdoors.
- (4) Fireplaces and Mantel-pieces.
- (5) Glass.
- (6) Paintings.
- (7) Panelling.
- (8) Parquetry and floors
- (9) Plasterwork on internal walls.
- (10) Roofs and beams (internal).
- (11) Screens.
- (12) Tapestries.
- (13) Miscellanea (e.g., carving, ironwork, locks, &c.).



*In room at S angle are 3 exposed chamfered beams, one being stop chamfered.
 The ceiling joists are exposed in the passages.*

8. **Condition :** *Fair.*

9. **Visited by (with dates) :** *A.T. Phillips. April 1927.*

10. **Bibliography :**

11. **No. of Ordnance Sheet (6-in.) :** *XLIII. S.E.*

12. **Signature of Investigator.** *A.T. Phillips*

The History of Ewyas Lacy

Document Record



The History of Ewyas Lacy

Document Record

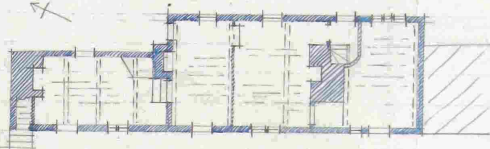
RECORD CARD FOR SECULAR MONUMENTS.

(N.B.—Detail of special interest is to be entered here, but described fully on a separate card.)

1. **Name and situation of Monument** (with owner's Name and Address). *House No. 1
60 yds. S.E. of Church.*


2. **General appearance:** (a) No. of storeys. *2*
(b) Building materials. *Stone rubble.*
(c) Roofs. *Stone slates.*

3. **Historical development** (with dates and small sketch plan).
A 17th c. house. Slight re-modelling has been done in 18th c. modern times.



4. **Special features** (if any).


5. **Elevations:** (Beginning with the main front, and mentioning, in the following order:—(a) Walls; (b) Gables; (c) Doors; (d) Windows; (e) Chimneys; (f) Rainwater heads and pipes.)

West Elev. Rubble walls. Doorway to most s. room has an old wood door frame + that to N has battened door hung on strap hinges of type  to a chamfered frame. There is a slight window to central room on ground floor with stone chamfered head, jamba + mullion.

S. Elev. Rubble. Gabled.

N. Elev. " " Chimney stack has square stone shaft.

East Elev. Rubble. Entrance door is battened hung by 2 strap hinges, similar to those above, to chamfered frame. At S is 3 light window with wood frame + flag stone label above. Above same is, at 1st floor level, a 3 light window with chamfered oak frame but mullions missing.

6. **Grounds:** (a)  P.T.O.

(89,102). Wt. 33,349. CJP. 147.
(97,153). " 5621-53.

County. *Herefordshire*
Parish. *Long Tern*
Sub-Commission. *Severn*
No. of Monument. *10*

The History of Ewyas Lacy

Document Record



The History of Ewyas Lacy

Document Record

B.

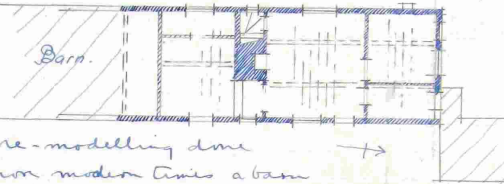
RECORD CARD FOR SECULAR MONUMENTS.

(N.B.—Detail of special interest is to be entered here, but described fully on a separate card.)

1. Name and situation of Monument (with owner's Name and Address). Pen-y-dre
90 yds. W. of church.
2. General appearance: (a) No. of storeys. 2. (1 gable on W side)
(b) Building materials. Rubble stone
(c) Roofs. Stone slates. (some mod. slate repair)

3. Historical development (with dates and small sketch plan).

An early 17th c. house.
Late in 18th ~~century~~ 17th c.
a barn was built onto the
S end of house a small
portion of which was formerly
the house being incorporated
into the barn + slight re-modelling done
in the house. In still more modern times a barn



4. Special features (if any). has been built up against N.E. angle of the house. The front of house has been heightened re-roofed to form two stories, this probably taking place at the time of the erection of the barn at S end.
5. Elevations: (Beginning with the main front, and mentioning, in the following order:—(a) Walls; (b) Gables; (c) Doors; (d) Windows; (e) Chimneys; (f) Rainwater heads and pipes.)

E. Elev. Stone rubble. Roof has been raised.
N. Elev. Gabled. Square stone chimney with projecting cap.
Blocked door on ground floor.
S. Elev. Concealed by incorporated into barn.
W. Elev. Stone rubble with no features of any note.
Only 1 story rattle in height.

The central shaft is of stone, plastered, has projecting cap. The shaft is square with battered sides →



6. Grounds:



(89,102). Wt. 32, 349—47. 500. 12/13. A. & E. W.
(97,153). „ 5021—53. 6000. 5/14. „

P.T.O.

County. Herefordshire

Parish. Longtown

Sub-Commission. Sander

No. of Monument. 11

11

The History of Ewyas Lacy

Document Record



The History of Ewyas Lacy

Document Record

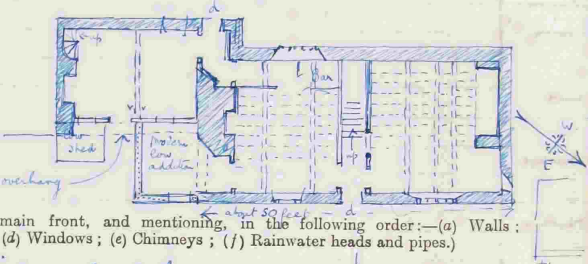
B

RECORD CARD FOR SECULAR MONUMENTS.
(N.B.—Detail of special interest is to be entered here, but described fully on a separate card.)

1. **Name and situation of Monument** (with owner's Name and Address). *The Greyhound Inn, on W side of main road 3/4 mile N. of S. Clotock's Church and 1/4 mile S.E. of Longtown Church.*


2. **General appearance:** (a) No. of storeys. *Two*
(b) Building materials. *Larger N block, stone rubble walls. Smaller S. part, timber framed front, rest of stone*
(c) Roofs. *Stone slabs*

3. **Historical development** (with dates and small sketch plan).
The S. smaller part of the building appears to have been a 16th century cottage of two rooms on each floor, later incased with stone on three of the sides. The larger northern part is an early 17th century building and there is no evidence that the ~~rest~~ outer walls were other than stone.

4. **Special features** (if any).


5. **Elevations:** (Beginning with the main front, and mentioning, in the following order:—(a) Walls; (b) Gables; (c) Doors; (d) Windows; (e) Chimneys; (f) Rainwater heads and pipes.)
East Front. The smaller S. building has its front partly covered by modern lower building, but original timber framing appears in the upper storey of the S. half which is jettied. This has large studs, with sloping struts between them which form a herring bone pattern, and a rectangular window.
The lower storey has a middle doorway with old frame and on either side of it, visible inside, a small rectangular window of two open lights divided by a chamfered mullion, and with a diamond shaped smaller mullion in each light.
The larger N. block has stone rubble walls, the windows and middle doorway modern except the northernmost window, ground floor, which is of four lights with old oak frame and mullions. The front wall is 2'8" thick.
The back walls contain no old features. There is a stone chimney set over each of the gable ends of the larger part and over the S. end of the smaller portion.

6. **Grounds:** (a) Gardens; (b) Outbuildings; (c) Statuary, sundials, etc.



P.T.O.

Country. *Herefordshire*
Parish. *Longtown*
Sub-Commission. *Seacliff*
No. of Monument. *12*

(89,102). Wt. 33,349—47. 500. 12/13. A.&E.W.
(97,153). .. 5621—53. 6000. 5/14. ..

The History of Ewyas Lacy

Document Record

7. Interior: (Disposition of rooms, if original, giving fittings as they occur (see list), beginning with the ground floor, following with the basement, and working up to the attic; staircases in the same manner.)

Fittings:
(See inside list)

- (1) Ceilings
- (2) Cupboards (wards)
- (3) Doors and Overdoors
- (4) Fireplaces and Mantel-pieces
- (5) Chim.
- (6) Paintings
- (7) Tapestries
- (8) Parquet and Floors
- (9) Plasterwork on internal walls
- (10) Roofs and basins (external)
- (11) Screens
- (12) Tapestries
- (13) Miscellaneous (e.g., carvings, porcelains, locks, etc.)

The older smaller block has a stop-chamfered ceiling beam across the middle the way projecting a foot above the masonry wall. The S half of the ceiling has disappeared, the N half is plastered. In the S wall is a large open fireplace and W. of it is a stone staircase partly of stone from the rubble base of the roof in the upper story is of double collar beam form filled in with square framing to form a partition.

The larger N. portion has a middle passage-way across it opposite the entrance doorway: it now contains a wooden staircase but both walls of the passage are of oak timber framing with chamfered broad studs set fairly close together: on the N. wall (where the stairs in the staircase) is an original doorway with an oak triangular soffited lintel the apex of the triangle hunched up to some angle iron.

The roof of the passage has two heavy stop-chamfered cross beams on the ceiling on which rest the rafters of the open timbered ceiling: many of these are original stop-chamfered joints mixed alternately with later square-chamfered joints. The S. half of this room has now a wooden roof.

The roof N. of the passage has three curved beams on stop-chamfered the other rough beams on which are beam rafters: these on the S. side are stop-chamfered & the other rough joints. In the N. wall is a fireplace of flint with a stop-chamfered lintel: E. of it was an oven (what the present tenant calls a "kitchen") now removed.

The upper story has open timbered ceilings (non-paired oak) with stop-chamfered beams, and old timber framed partitions.

8. Condition: Good except in the smaller building which is now used mainly as an outbuilding


9. Visited by (with dates): J. B. Blue (7 March 1927)

10. Bibliography:

11. No. of Ordnance Sheet (6 in.): XLIII. SE.

12. Signature of Investigator: J. B. Blue

Longtown
The Greyhound Inn



The History of Ewyas Lacy

Document Record



The History of Ewyas Lacy

Document Record



The History of Ewyas Lacy

Document Record



The History of Ewyas Lacy

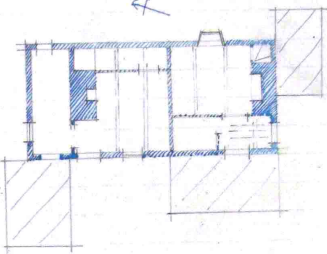
Document Record

B. RECORD CARD FOR SECULAR MONUMENTS.
(N.B.—Detail of special interest is to be entered here, but described fully on a separate card.)

1. **Name and situation of Monument** (with owner's Name and Address). *Post Office (two tenements) 500 yds. S.E. of Church.*

2. **General appearance:** (a) No. of storeys. *1 + attic*
(b) Building materials. *Rubble stone*
(c) Roofs. *Stone slates*

3. **Historical development** (with dates and small sketch plan).
a late 17th c. house. In modern times it has been converted into 2 tenements, a post office addition built on along W side of southern tenement, a modern addition on W side of N. tenement. There has also been a lean-to



4. **Special features** (if any). *added at S end + some remodelling inside*

5. **Elevations:** (Beginning with the main front, and mentioning, in the following order:—(a) Walls; (b) Gables; (c) Doors; (d) Windows; (e) Chimneys; (f) Rainwater heads and pipes.)
West Elev. Stone rubble. Front largely concealed by modern additions. There is a dormer window.
South Elev. Gabled. Rectangular chimney shaft (stone).
North Elev. Gable.
East Elev. On 1st floor is wood frame (without mullions) of slight window.
Central stack has rectangular stone base + mod. brick above.

6. **Grounds:** (a) Gardens; (b) Outbuildings; (c) Statuary, sundials, etc.

County. *Worcestershire*
Parish. *Long Eaton*
Sub-Commission. *Southern*
No. of Monument. **13**

P.T.O.

(89,102). Wt. 33, 349—47. 500. 12/13. A.&E.W.
(97,153). .. 5621—53. 6000. 5/14. ..

The History of Ewyas Lacy

Document Record

7. Interior: (Disposition of rooms, if original, giving fittings as they occur (see list), beginning with the ground floor, following with the basement, and working up to the attics; staircases in the same manner.)

Fittings:

(Reminder list).

- (1) Ceilings.
- (2) Cupboards (fixed).
- (3) Doors and Overdoors.
- (4) Fireplaces and Mantel-pieces.
- (5) Glass.
- (6) Paintings.
- (7) Panelling.
- (8) Parquetry and floors
- (9) Plasterwork on internal walls.
- (10) Roofs and beams (internal).
- (11) Screens.
- (12) Tapestries.
- (13) Miscellanea (e.g., carving, ironwork, locks, &c.).



Ceilings of ground floor rooms have exposed changed beams & there are some exposed joists.

8. Condition: *Fair.*

9. Visited by (with dates): *J.T. Phillips April 1927*

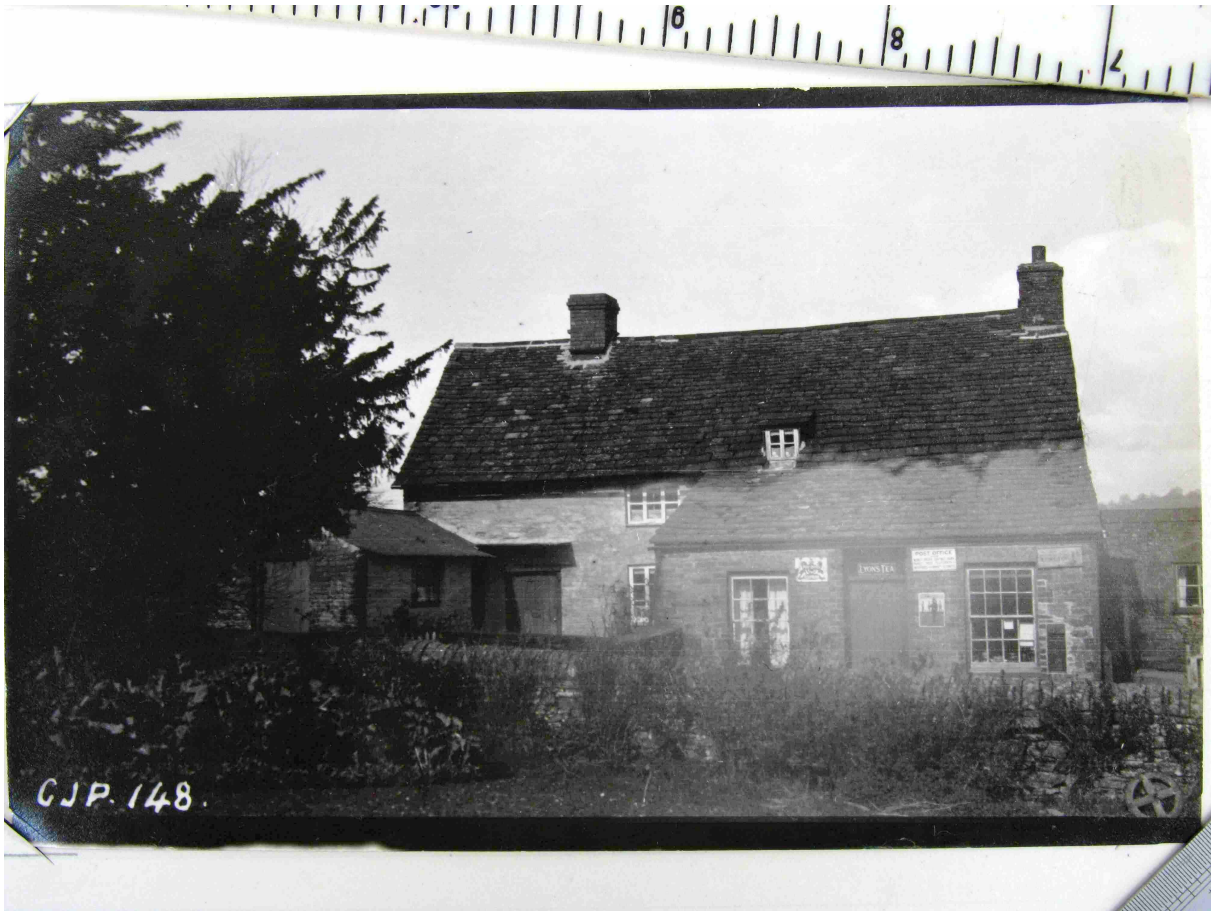
10. Bibliography:

11. No. of Ordnance Sheet (6-in.): *X LIII S.E.*

12. Signature of Investigator. *J.T. Phillips*

The History of Ewyas Lacy

Document Record



The History of Ewyas Lacy

Document Record

B.

RECORD CARD FOR SECULAR MONUMENTS.

(N.B.—Detail of special interest is to be entered here, but described fully on a separate card.)

1. Name and situation of Monument (with owner's Name and Address). *House No. 5.
710 yds S.S.E. of church on W side road.*

2. General appearance: (a) No. of storeys. *2*
(b) Building materials. *Rubble stone*
(c) Roofs. *Mod. slates.*

3. Historical development (with dates and small sketch plan).
a late 17th c. house. In modern times it has been entirely re-modelled inside & the S wall has been practically re-built. Modern additions have been added against N & W walls.



4. Special features (if any).

5. Elevations: (Beginning with the main front, and mentioning, in the following order:—(a) Walls; (b) Gables; (c) Doors; (d) Windows; (e) Chimneys; (f) Rainwater heads and pipes.)
It is gabled at E & W ends & on these ends the stone walling has been faced with plaster. There is nothing of note on any elevation except at the floor level of E end there is a slight window with old moulded frame & mullions.

6. Grounds:



County. *Herefordshire*
Parish. *Longton*
Sub-Commission. *Sewell*
No. of Monument. *114*

P.T.O.

The History of Ewyas Lacy

Document Record



The History of Ewyas Lacy

Document Record

B.

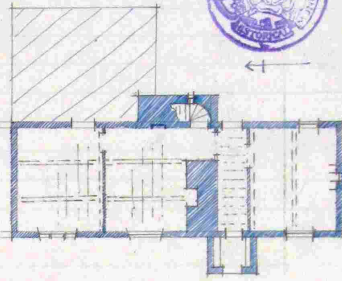
RECORD CARD FOR SECULAR MONUMENTS.

(N.B.—Detail of special interest is to be entered here, but described fully on a separate card.)

- Name and situation of Monument** (with owner's Name and Address). *Upper Pont-hendre. 800 yds. N of Clodock Church.*
- General appearance:** (a) No. of storeys. *1 + attic.*
(b) Building materials. *Rubble stone.*
(c) Roofs. *Modern slate.*

- Historical development** (with dates and small sketch plan).

Built in the first half of the 17th c. In modern times there has been some slight remodelling internally, fresh windows etc. inserted + an addition built on to E side of house.



- Special features** (if any).

Semi-circular stone staircase, rectangular externally. This however appears to be a feature common to several houses in this immediately neighbouring parishes.

- Elevations:** (Beginning with the main front, and mentioning, in the following order:—(a) Walls; (b) Gables; (c) Doors; (d) Windows; (e) Chimneys; (f) Rainwater heads and pipes.)

West Elev. Stone rubble walls. Gabled projecting porch with seat on either side internally. 3 dormer windows. Entrance door is 17th c. battered door with modern glazed panel inserted - hung on a pair of trap hinges. There is a small slight transomed window pane above.

S. Elev. Stone rubble. Rectangular outside stack with receding offsets + modern brick shaft.

N. Elev. Stone rubble. Gabled with exposed timbers + modern large boards.

East Elev. Stone rubble. Rectangular outside projection for staircase. Entrance door has stop chamfered frame + door leading to modern addition has stop chamfered frame + battered door. Ground floor window has flag stone projecting label.

Central stack is of stone with square base + projecting cap. Mod. brick shaft.

- Grounds:** (a) Gardens; (b) Outbuildings; (c) Statuary, sundials, etc.

County. *Herefordshire*

Parish.

Longtown

Sub-Commission.

Barlham

No. of Monument.

16

P.T.O.

The History of Ewyas Lacy

Document Record

7. Interior: (Disposition of rooms, if original, giving fittings as they occur (see list), beginning with the ground floor, following with the basement, and working up to the attics; staircases in the same manner.)

Fittings:

(Reminder list).

- (1) Ceilings
- (2) Cupboards (fixed).
- (3) Doors and Overdoors.
- (4) Fireplaces and Mantel-pieces.
- (5) Glass.
- (6) Paintings.
- (7) Panelling.
- (8) Parquetry and floors.
- (9) Plasterwork on internal walls.
- (10) Roofs and beams (internal).
- (11) Screens.
- (12) Tapestries.
- (13) Miscellanea (e.g., carving, ironwork, locks, &c.).



On ground floor are 2 17th c. battened doors one plain & the other has moulded planks.

On 1st floor is one plain battened door.

Peelie roof.

Ground floor rooms have exposed stop chamfered beams & with exception of S room all have exposed joints which in turn are also stop chamfered.

8. Condition: *Good.*

9. Visited by (with dates): *A.T. Phillips*

10. Bibliography:

11. No. of Ordnance Sheet (6-in.): *X L III S. E.*

12. Signature of Investigator. *A.T. Phillips*

The History of Ewyas Lacy

Document Record



Observations:

Index page is at http://www.ewyaslacy.org.uk/doc.php?d=rs_ewy_0342