



The History of Ewyas Lacy

Document Record

Held at: National Archives

Reference: AE/1-4

Source: Original Survey Particulars

Title: Digital Archive: Royal Commission on Ancient and Historical Monuments - Photographs of original survey particulars, Part 11 of 13

Place name: Craswall, Llanveynoe, Longtown, Michaelchurch Escley

Date: 1920s

Description:

Part 11: Longtown

This Digital Archive collection contains photographs of surviving parts of the initial surveys of Craswall, Michaelchurch Escley, Llanveynoe and Longtown carried out in the 1920's by the Royal Commission on Ancient and Historical Monuments. They comprise photographs, hand written survey notes and the annotated maps the surveyors used, which are held in the National Archives and formed the basis for the eventual RCAHM Reports on the buildings and structures in the parishes. The photographs have been made available by Chris Hodges, to whom we are most grateful.

ELSG Ref RCAHM Records: Longtown

91	Middle Pont-hendre 1
92	Middle Pont-hendre 2
93	Middle Pont-hendre Photo
94	Lower Pont-hendre 1
95	Lower Pont-hendre 2
96	Lower Pont-hendre Photo
97	Brook Farm 1
98	Brook Farm 2
99	Brook Farm 3
100	Brook Farm Photo1
101	Brook Farm Photo2
102	Coldbrook Farm Barn
103	Coldbrook Farm Barn Photo



The History of Ewyas Lacy

Document Record

104	Great Cwmcoched 1
105	Great Cwmcoched 2
106	Little Cwmcoched 1
107	Little Cwmcoched 2
108	Little Cwmcoched Photo
109	Cwm Farm 1
110	Cwm Farm 2
111	Cwm Farm Photo
112	Garn-galed 1
113	Garn-galed 2
114	Garn-galed Photo1
115	Garn-galed Photo2
116	Garn
117	Garn Photo
118	Lower Hunt House Farm
119	Lower Hunt House Farm Photo

The History of Ewyas Lacy

Document Record

B.

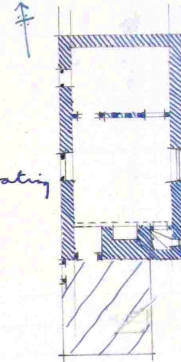
RECORD CARD FOR SECULAR MONUMENTS.

(N.B.—Detail of special interest is to be entered here, but described fully on a separate card.)

1. Name and situation of Monument (with owner's Name and Address). *Middle Post-henge
615 yds. N of Clodock Church.*
2. General appearance: (a) No. of storeys. *2*
(b) Building materials. *Stone rubble.*
(c) Roofs. *Stone slate.*

3. Historical development (with dates and small sketch plan).

A late 16th or early 17th house which has undergone some re-modelling c. 1700. The extension on S was added late in 18th possibly incorporating some older work which has been further extended & heightened in still more recent times.



4. Special features (if any)

5. Elevations: (Beginning with the main front, and mentioning, in the following order:—(a) Walls; (b) Gables; (c) Doors; (d) Windows; (e) Chimneys; (f) Rainwater heads and pipes.)

East Elev. Stone rubble. On ground floor level is a single light window frame to stairs + two 2 light window frames, one of which has a transome.

South Elev. Gabled. Rectangular chimney stack re-built.

West Elev. Stone rubble. Two old wood chamfered window frames, the more westerly of which is without glazing but has a shutter hung on strap hinges, while the other has modern mullions + glass inserted. S. extension has old batten door on strap hinges.

North Elev. Stone. Gabled.

6. Grounds: (a) Gardens; (b) Outbuildings; (c) Statuary, sundials, etc.



P.T.O.

(80,102). Wt. 33,340—47,500. 12/13. A.&E.W.
(97,153). " 5621—53,6000. 6/14. "

County. *Herefordshire*
Parish. *Long Tern*

Sub-Commission.

Severian.

No. of Monument.

17

The History of Ewyas Lacy

Document Record

7. Interior: (Disposition of rooms, if original, giving fittings as they occur (see list), beginning with the ground floor, following with the basement, and working up to the attics: staircases in the same manner.)

Fittings:

(Reminder list).

- (1) Ceilings
- (2) Cupboards (fixed).
- (3) Doors and Overdoors.
- (4) Fireplaces and Mantel-pieces.
- (5) Glass.
- (6) Paintings.
- (7) Panelling.
- (8) Parquetry and floors.
- (9) Plasterwork on internal walls.
- (10) Roofs and beams (internal).
- (11) Screens.
- (12) Tapestries.
- (13) Miscellaneas (e.g., carving, ironwork, locks, &c.).



Between the two ground floor rooms is a partition the part pulled on stop chamfered as also on cills & head with wood panels.

8. Condition: *Fair*

9. Visited by (with dates): *A.T. Philips 21. 10. 27*

10. Bibliography:

11. No. of Ordnance Sheet (6-in.): *XLV. S.E.*

12. Signature of Investigator. *A.T. Philips*

The History of Ewyas Lacy

Document Record



The History of Ewyas Lacy

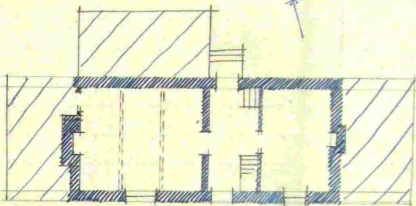
Document Record

B.


RECORD CARD FOR SECULAR MONUMENTS.

(N.B.—Detail of special interest is to be entered here, but described fully on a separate card.)

- Name and situation of Monument** (with owner's Name and Address). *Lower Port. Mendra
534 yds N of Clodock Church.*
- General appearance:** (a) No. of storeys. *2 rattle*.
(b) Building materials. *Stone rubble*.
(c) Roofs. *Modern slates*.
- Historical development** (with dates and small sketch plan).
*A 17th c. house. late in
18th c. it was extended
at either end and some
addition built on an N
side*



- Special features** (if any)
- Elevations:** (Beginning with the main front, and mentioning, in the following order:—(a) Walls; (b) Gables; (c) Doors; (d) Windows; (e) Chimneys; (f) Rainwater heads and pipes.)
 - S. Elev. Rough cast & modernised windows etc.*
 - N. Elev. Stone rubble. Doorway has chamfered
frame & batted door hung on pair of trap
hinges the lower of which is modern. There
is a batted door to cellar with an
old strap hinge & chamfered frame.*
 - E. Elev. Gabled. Plastered. Rectangular stone
chimney stack with modern brick top.
largely concealed by addition.*
 - W. Elev. Plastered. Gabled. Rectangular outside
stack with stepped off set sides & modern
brick top. Mostly concealed by addition.*
- Grounds:** (a) Gardens; (b) Outbuildings; (c) Statuary, sundials, etc.



P.T.O.

(80,102). Wt. 33,349—47. 500. 12/13. A.&E.W.
(97,153). „ 5921—53. 6000. 6/14. „

County. *Shropshire* County. *Shropshire*
Parish. *Longton* Parish. *Longton*
Sub-Commission. *Sever* Sub-Commission. *Sever*
No. of Monument. *19* No. of Monument. *19*

The History of Ewyas Lacy

Document Record

7. Interior: (Disposition of rooms, if original, giving fittings as they occur (see list), beginning with the ground floor, following with the basement, and working up to the attic; staircases in the same manner.)

Fittings:
(Residual list)

- (1) Ceilings
- (2) Cupboards (fixed)
- (3) Doors and Overdoors
- (4) Fireplaces and Mantel pieces
- (5) Glass
- (6) Paintings
- (7) Panelling
- (8) Parquet and floors
- (9) Plasterwork on internal walls
- (10) Roofs and houses (interior)
- (11) Stoves
- (12) Tapestries
- (13) Miscellaneous (e.g. carving, ornaments, locks, etc.)

Ceiling given warty room on ground floor has repaired stop chamfered beam. On 1st floor there is an exposed stop chamfered ceiling beam.

8. Condition: Good

9. Visited by (with dates): J.T. Philips 20. 10. '27

10. Bibliography:

11. No. of Ordnance Sheet (6-in.): XLIV. 3 E.

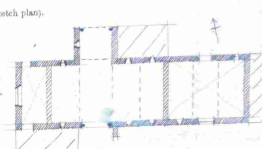
12. Signature of Investigator: J.T. Philips

B. RECORD CARD FOR SECULAR MONUMENTS.
(N.B.—Detail of special interest is to be entered here, but described fully on a separate card.)

1. Name and situation of Monument (with owner's Name and Address). Beam at lower part of house 25 yds S.E. of house on opposite side of road.

2. General appearance: (a) No. of storeys. 3 mod E bay 2. also mod W bay.
(b) Building materials. Stone rubble.
(c) Roofs. Stone slates.

3. Historical development (with dates and small sketch plan).
c. 17th c. beam.
In modern times lean-to roofed addition has been added on N.E. side via extension built on at E end.




4. Special features (if any).

5. Elevations: (Beginning with the main front, and mentioning, in the following order:—(a) Walls; (b) Gables; (c) Doors; (d) Windows; (e) Chimneys; (f) Rainwater heads and pipes.)
N. elev. Projecting gabled porch. Downer under. Slit window in bay W porch. Some repairs E end.
S. elev. Double down with lean-to downer head. Slit window on modern lean-to. Buttresses of gable.
W. elev. Gabled. 3 slit windows in gable.
E. elev. Concealed.

Internally beam is divided into 8 bays by timbers of type $\Delta\Delta$. Bottom walls of stone have been laid. Floor inserted to meet E main bay forming a stable on ground floor & also to meet W. bay.

6. Grounds:



Country: _____ Parish: _____ Sub-Commission: _____ No. of Monument: _____

(80,102) W.33,346—42, 500, 12,111, A.R.E.W.
(92,102) — 1011—12, 600, 9,14

The History of Ewyas Lacy

Document Record



The History of Ewyas Lacy

Document Record

(N.B.—Detail of special interest is to be entered here, but described fully on a separate card.)

B

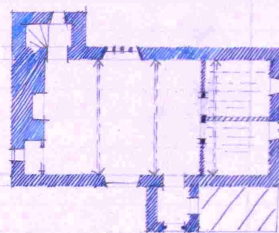
RECORD CARD FOR SECULAR MONUMENTS.

(N.B.—Detail of special interest is to be entered here, but described fully on a separate card.)

1. Name and situation of Monument (with owner's Name and Address). *Brook Farm.*
1/2 mile N.E. of Clodock Church.

2. General appearance: (a) No. of storeys. *2 + attic.*
(b) Building materials. *Stone rubble.*
(c) Roofs. *Modern slates.*

3. Historical development (with dates and small sketch plan).
A 16th c. house. Very slight modifications were made during 17th c. + again in modern times.



4. Special features (if any)

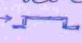
5. Elevations: (Beginning with the main front, and mentioning, in the following order:—(a) Walls; (b) Gables; (c) Doors; (d) Windows; (e) Chimneys; (f) Rainwater heads and pipes.)

South Elev. Stone rubble. A slight casement with 18th c. wood frame on both ground + 1st floor. Projecting gabled 2 storied porch with battened door with exposed nail heads hung on pair of strap hinges to a stop chamfered frame. There is a slit window in gable above.

East Elev. Gabled. Rectangular chimney stack with mod. brick top. On ground floor is a 2 light casement + a 3 light both with 18th c. wood frames. On 1st floor are two 3 light casements with old chamfered frames one retains its original chamfered mullions.

North Elev. On ground floor is a 4 light 18th c. casement on 1st floor a 3 light with old chamfered frame.
The staircase forms a projecting bay + has on 1st ground floor a window with old chamfered frame.

6. Grounds: (a) Gardens; (b) Outbuildings; (c) Statuary, sundials, etc.)

West Elev. Gabled. Square stone chimney stack with projecting 1 course cap. On ground floor is window with old chamfered frame + flag stone label + 

County. *Shropshire* Parish. *Longtime* Sub-Commission. *Secular* No. of Monument. *10*

(89,102). Wt. 33,340—47. 500. 12/13. A.&E.W.
(97,153). „ 5621—53. 6000. 5/14. „

P.T.O.


The History of Ewyas Lacy

Document Record

7. Interior: (Disposition of rooms, if original, giving fittings as they occur (see list), beginning with the ground floor, following with the basement, and working up to the attic, staircases in the same manner.)

Fittings:
(Remember list)

- (1) Cellings
- (2) Cupboards (floors)
- (3) Doors and Overdoors
- (4) Fireplaces and Mantel-pieces
- (5) Glass
- (6) Paintings
- (7) Panelling
- (8) Parquetry and Floors
- (9) Plasterwork on internal walls
- (10) Rails and balustrades (internal)
- (11) Screens
- (12) Tapestries
- (13) Miscellaneous (e.g. mirrors, tapestries, book-cases, etc.)



8. Condition: Fair

9. Visited by (with dates): J.T. Phillips, Oct. 11th 27

10. Bibliography:

11. No. of Ordnance Sheet (6-in.):

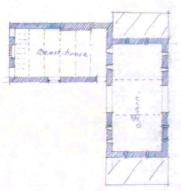
12. Signature of Investigator: J.T. Phillips

RECORD CARD FOR SECULAR MONUMENTS.
(N.B.—Detail of special interest is to be entered here, but described fully on a separate card.)

1. Name and situation of Monument (with owner's Name and Address): *Barn & Beast-hum at Brook Farm 40 yds N.W. of house*

2. General appearance: (a) No. of storeys: *Beast-hum - 1 story. Barn - 1*
(b) Building materials: *Stone rubble.*
(c) Roofs: *Stone slates.*

3. Historical development (with dates and small sketch plan):
Two 17th c. buildings, of which the 'Beast-hum' was possibly added a few years after the barn.



4. Special features (if any):

5. Elevations: (Beginning with the main front, and mentioning, in the following order—(a) Walls; (b) Gables; (c) Doors; (d) Windows; (e) Chimneys; (f) Rainwater heads and pipes.)

Beast-hum: W. Elev. Gabled. Two dormers with step-changed frames. Between them a light diamond mullion window with mullion missing. On the gable end a slit window.
S. Elev. A similar diamond mullion window to N. Elev. also with step-changed dormer frame.
N. Elev. A dormer with step-changed dormer frame.
E. Elev. Gabled incorporated in barn wall.

Barn: W. Elev. Small dormer has old profile. Then on a triangular shaped opening in the tower.
S. Elev. Gabled. 1 slit window in the tower.
N. Elev. Gabled. Red 'lean-to'.
E. Elev. Small dormer with a triangular opening 6.5 ft deep & 2 ft wide to N.

6. Grounds: (a) Gardens; (b) Outbuildings; (c) Statuary, sundials, etc.

County: *Wiltshire* Parish: *Long Eaton* Sub-Commission: *Swindon* No. of Monument: *200*

08.102, W. 33,343-47, 600, 12/13, A.B.W.
(07.153) .. 5021-53, 6000, 3/14 ..

P.T.O.

The History of Ewyas Lacy

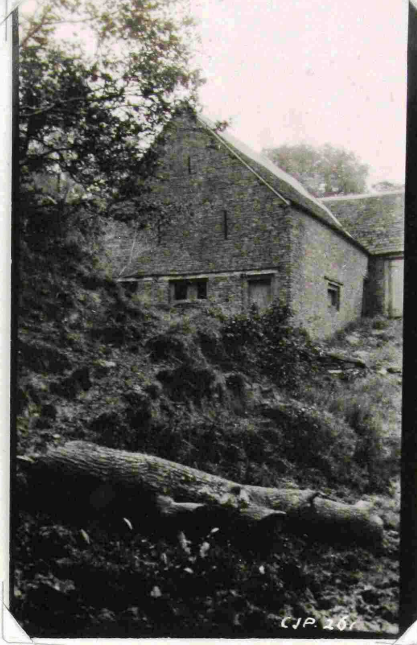
Document Record

7. Interior: (Disposition of rooms, if original, giving fittings as they occur (see list), beginning with the ground floor following with the basement and working up to the attics: staircases in

Fittings:

(Reminder list).

- (1) Ceilings.
- (2) Cupboards (fixed).
- (3) Doors and Overdoors.
- (4) Fireplaces and Mantel-pieces.
- (5) Glass.
- (6) Paintings.
- (7) Panelling.
- (8) Parquetry and floors
- (9) Plasterwork on internal walls.
- (10) Roofs and beams (internal).
- (11) Screens.
- (12) Tapestries.
- (13) Miscellanea (e.g., carving, ironwork, locks, &c.).



Internally barn is divided into 3 bays by roof trusses of type Δ .

Beard-house has 5 exposed stop chamfered beam raftered joists, the latter in most westerly bay themselves being stop chamfered.

8. Condition: *fair*

9. Visited by (with dates): *A.T. Phillips Oct. 11th 27*

10. Bibliography:

11. No. of Ordnance Sheet (6-in.):

12. Signature of Investigator. *A.T. Phillips*

The History of Ewyas Lacy

Document Record

staircases in the same manner.)



The History of Ewyas Lacy

Document Record



The History of Ewyas Lacy

Document Record

B.

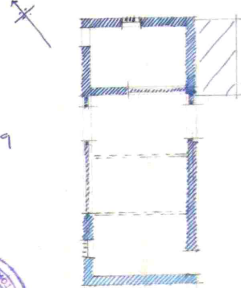
RECORD CARD FOR SECULAR MONUMENTS.

(N.B.—Detail of special interest is to be entered here, but described fully on a separate card.)

- Name and situation of Monument** (with owner's Name and Address). *Barn 100 yds S.E. of Coldbrook Farm & opp. 3/4 m. W of Clodock Church.*
- General appearance:** (a) No. of storeys.
(b) Building materials. *Timber frame on stone plinth rubble stone walls*
(c) Roofs. *Part stone slate rest corrugated iron.*

- Historical development** (with dates and small sketch plan).

A 17th c. barn. In modern times the S.W end has been rebuilt as also has the S.E. when timber framing has been replaced by a rubble stone wall.



- Special features** (if any)



- Elevations:** (Beginning with the main front, and mentioning, in the following order:—(a) Walls; (b) Gables; (c) Doors; (d) Windows; (e) Chimneys; (f) Rainwater heads and pipes.)

N.W. Elev. The two end bays are of rubble stone while the two intermediate bays are of timber framing covered with modern matched boarding on a stone plinth. In most southerly bay is a light diamond mullioned window.

S.E. Elev. Modern lean-to conceals N end. Remainder re-built modern stone.

N.E. Elev. Rubble stone gabled with exposed timbers. On ground floor level is a light diamond mullioned window with internal shutter hung on strap hinges. Loft has shuttered opening with wood frame.

S.W. Elev. Gabled. Re-built.

- Grounds:** (a)



(80.102). Wt. 33.340—47.
(87.133). " 5621—53. 6000. 5/14. "

County. *Herefordshire*
Parish. *Longtown*
Sub-Commission. *Sealer*
No. of Monument. *20*

The History of Ewyas Lacy

Document Record



The History of Ewyas Lacy

Document Record

B.

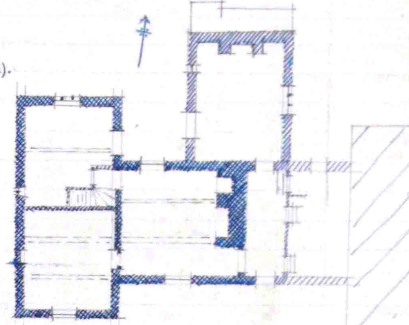
RECORD CARD FOR SECULAR MONUMENTS.

(N.B.—Detail of special interest is to be entered here, but described fully on a separate card.)

1. Name and situation of Monument (with owner's Name and Address). *Great Cwmcoched*
1/2 mile S.W. of Clodock Church.
2. General appearance: (a) No. of storeys. *2 + attic.*
(b) Building materials. *Stone rubble.*
(c) Roofs. *Stone slates.*

3. Historical development (with dates and small sketch plan).

A late 17th c. house. a wing was built on at E end of N side c. 1700. The portion of the house E of central chimney stack appears to have been added, or re-built late in 18th c.



4. Special features (if any)

5. Elevations: (Beginning with the main front, and mentioning, in the following order:—(a) Walls; (b) Gables; (c) Doors; (d) Windows; (e) Chimneys; (f) Rainwater heads and pipes.)

- S. Elev. Wing is gabled. Wall has been re-faced & elevation modernised.*
- W. Elev. Stone rubble. Rectangular stone bay to stack + 2 attached square stone shafts with projecting caps. On both ground floor + 1st floor is a slight casement window with plain frame externally + chamfered internally.*
- N. Elev. W. wing is gabled & has exposed purlins. On ground floor it has a slight casement + a slight casement to attic. The later or E wing is gabled & has rectangular stone outside chimney stack.*
- E. Elev. Concealed by modern barn. There is a gable against central stack.*



6. Grounds: (a) Gardens; (b) Outbuildings; (c) Statuary, sundials, etc.

County. *Shropshire*
Parish. *Longton*

Sub-Commission. *Sewer*

No. of Monument. *9*

The History of Ewyas Lacy

Document Record

7. Interior : (Disposition of rooms, if original, giving fittings as they occur (see list), beginning with the ground floor, following with the basement, and working up to the attics ; staircases in the same manner.)

Fittings :

(Reminder list).

- (1) Ceilings
- (2) Cupboards (fixed).
- (3) Doors and Overdoors.
- (4) Fireplaces and Mantel-pieces.
- (5) Glass.
- (6) Paintings.
- (7) Panelling.
- (8) Parquetry and floors.
- (9) Plasterwork on internal walls.
- (10) Roofs and beams (internal).
- (11) Screens.
- (12) Tapestries.
- (13) Miscellaneous (e.g., carving, ironwork, locks, &c.).



In W. wall of living room is a stop chamfered door frame.

Ceilings of ground floor rooms have stop chamfered beams exposed except to later wing. On 1st floor are some exposed stop chamfered beams in ceilings.

W. wing has turrets of type $\Delta\Delta$

Three light windows in pantry has a pair of shutters on modern stop hinges.

8. Condition : Good.

9. Visited by (with dates) : A.T. Phillips . July 1927.

10. Bibliography :

11. No. of Ordnance Sheet (6-in.) : XLIII. S.E.

12. Signature of Investigator. A.T. Phillips

The History of Ewyas Lacy

Document Record

B.

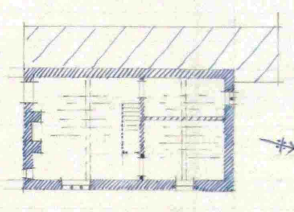
RECORD CARD FOR SECULAR MONUMENTS.

(N.B.—Detail of special interest is to be entered here, but described fully on a separate card.)

1. Name and situation of Monument (with owner's Name and Address). *Little Cwmcocked*
1/2 mile S.W. of Clodock Church.

2. General appearance: (a) No. of storeys. *2* rather
(b) Building materials. *Stone rubble.*
(c) Roofs. *Modern Slates*

3. Historical development (with dates and small sketch plan).
Built c. 1700. In modern times slight re-modelling has been effected inside re-lean-to built along the west side.



4. Special features (if any)

5. Elevations: (Beginning with the main front, and mentioning, in the following order:—(a) Walls; (b) Gables; (c) Doors; (d) Windows; (e) Chimneys; (f) Rainwater heads and pipes.)

East Elevation. Stone rubble with battened base. On ground floor is a slight window with old mullion frame. Other windows are modern.

North Elevation. Gabled. On ground floor is a slight cove with flag stone label above.

West Elevation. Concealed by modern lean-to.

South Elevation. Stone rubble. Gabled. Chimney stacks have been re-built.

6. Grounds: (a) Gardens; (b) Outbuildings; (c) Statuary, sundials, etc.

County. *Herefordshire* Parish. *Long Crum* Sub-Commission. *Sunder.* No. of Monument. *92.*

(80,102). Wt.33,349—47. 500. 12/13. A.&E.W.
(97,153). „ 5621—53. 0000. 5/14. „

P.T.O.

The History of Ewyas Lacy

Document Record

7. Interior: (Disposition of rooms, if original, giving fittings as they occur (see list), beginning with the ground floor, following with the basement, and working up to the attics: staircases in the same manner.)

Fittings:

(Reminder list).

- (1) Ceilings
- (2) Cupboards (fixed).
- (3) Doors and Overdoors.
- (4) Fireplaces and Mantel-pieces.
- (5) Glass.
- (6) Paintings.
- (7) Panelling.
- (8) Parquetry and floors.
- (9) Plasterwork on internal walls.
- (10) Roofs and beams (internal).
- (11) Screens.
- (12) Tapestries.
- (13) Miscellaneous (e.g., carving, ironwork, locks, &c.).



Doorway between two rooms has a stop chamfered door frame.

Ceilings of ground floor rooms have exposed stop chamfered beams & exposed ceiling joists.

8. Condition: *good.*

9. Visited by (with dates): *A.T. Phillips July 1927.*

10. Bibliography:

11. No. of Ordnance Sheet (6-in.): *X LIII. S.E.*

12. Signature of Investigator. *A.T. Phillips*

The History of Ewyas Lacy

Document Record



The History of Ewyas Lacy

Document Record

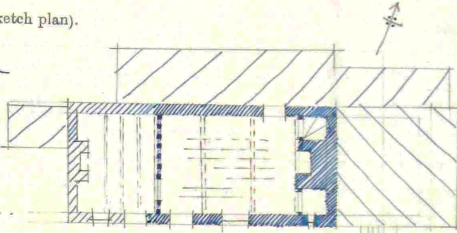
B.

RECORD CARD FOR SECULAR MONUMENTS.
 (N.B.—Detail of special interest is to be entered here, but described fully on a separate card.)

1. Name and situation of Monument (with owner's Name and Address). *Cwm Farm, nearly 1 mile S.W. of Clodock Church.*


2. General appearance: (a) No. of storeys. *1 + attic.*
 (b) Building materials. *Rubble stone.*
 (c) Roofs. *Stone slates.*

3. Historical development (with dates and small sketch plan).
A 17th c. house. The more westerly room was largely re-built late in the 18th c. when also a barn extension was added at the E end. In modern times, also,



4. Special features (if any) *lean-to' roofed extensions have been added on the N side & a small addition built on against W end.*

5. Elevations: (Beginning with the main front, and mentioning, in the following order:—(a) Walls; (b) Gables; (c) Doors; (d) Windows; (e) Chimneys; (f) Rainwater heads and pipes.)
South Elev. Rubble stone. There is a dormer window.
North Elev. Concealed by 'lean-to' addition.
East Elev. Concealed by barn.
West Elev. Gabled. Square stone stack with projecting conical cap.



6. Grounds: (a) Gardens; (b) Outbuildings; (c) Statuary, sundials, etc.
Used as toilet over door in modern 'lean-to' is a portion of head of a diamond mullioned window.

County. *Herefordshire*
 Parish. *Longtown*
 Sub-Commission. *Sander*
 No. of Monument. *93.*

(80,102). Wt. 33,349—47. 500. 12/13. A.&E.W.
 (97,153). „ 5821—53. 6000. 6/14. „

P.T.O.

The History of Ewyas Lacy

Document Record

7. Interior: (Disposition of rooms, if original, giving fittings as they occur (see list), beginning with the ground floor, following with the basement, and working up to the attics: staircases in the same manner.)

Fittings:

(Reminder list).

- (1) Ceilings
- (2) Cupboards (fixed).
- (3) Doors and Overdoors.
- (4) Fireplaces and Mantel-pieces.
- (5) Glass.
- (6) Paintings.
- (7) Panelling.
- (8) Parquetry and floors.
- (9) Plasterwork on internal walls.
- (10) Roofs and beams (internal).
- (11) Screens.
- (12) Tapestries.
- (13) Miscellanea (e.g., carving, ironwork, locks, &c.).



Ceilings of ground floor rooms have exposed ^{step} chamfered beams & the joints are exposed in the more easterly room.

Between the two rooms the spaces between timber posts of partition are filled with wood panels (now covered with wall-paper).

8. Condition: Fair.

9. Visited by (with dates): J.T. Shilleys 20. 10. '27

10. Bibliography:

11. No. of Ordnance Sheet (6-in.): XLIII. S.E

12. Signature of Investigator. J.T. Shilleys

The History of Ewyas Lacy

Document Record



The History of Ewyas Lacy

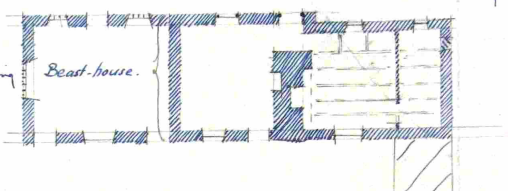
Document Record

B. RECORD CARD FOR SECULAR MONUMENTS.
(N.B.—Detail of special interest is to be entered here, but described fully on a separate card.)

1. **Name and situation of Monument** (with owner's Name and Address). *Garn-galed 600 yds. S.E. of Clodock Church. (w portion used as 'Beast-house')*

2. **General appearance:** (a) No. of storeys. *2.*
(b) Building materials. *Stone rubble*
(c) Roofs. *Stone slates.*
(admision unobtainable)


3. **Historical development** (with dates and small sketch plan).
*estd
An. 17th c. house:
The eastern portion has
undergone some re-modelling
in modern times that
had roof raised.*



4. **Special features** (if any).

5. **Elevations:** (Beginning with the main front, and mentioning, in the following order:—(a) Walls; (b) Gables; (c) Doors; (d) Windows; (e) Chimneys; (f) Rainwater heads and pipes.)

S. Elev. House portion has been modernised & has a modern lean-to addition. 'Beast-house' has two battened doors on strap hinges & chamfered frames with widely projecting slab label. Between the doorway is a 5 light diamond mullioned window with small diamond shaped balusters subdividing each light. Also under is a deeply projecting slab label.

N. Elev. Entrance door to house is battened, hung on strap hinges, has exposed nail heads & a heavy chamfered wood frame. W of door is a window with old wood frame with stop chamfered lintel & above same a flag stone label of shape . The door to 'beast-house' is similar to entrance door of house & has on either side a diamond mullioned window, one having 4 lights & the other 3 lights. There is a square opening to left on 1st floor.

E. Elev. Gabled. Blocked window on ground floor.

6. **W. Elev. House is gabled. 'Beast-house' is gabled. On ground**
Grounds: (a) Gardens; (b) Outbuildings; (c) Statuary, sundials, etc.
floor is a 5 light diamond mullioned window with small diamond balusters sub-dividing lights. In gable an 5 slit window in 3 tiers.

Central rectangular stone stack with 2 course projecting cap.

County. *Shropshire* Parish. *Long Tern* Sub-Commission. *Saunders* No. of Monument. *24*

P.T.O.

(89,102). Wt. 33, 349—47. 500. 12/13. A.&E.W.
(97,153). „ 5621—53. 6000. 5/14. „

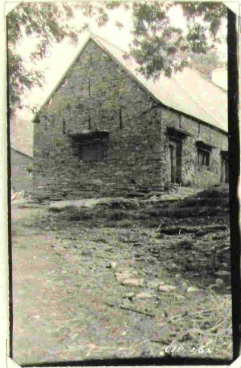
The History of Ewyas Lacy

Document Record

7. Interior: (Disposition of rooms, if original, giving fittings as they occur (see list), beginning with the ground floor, following with the basement, and working up to the attic; staircases in the same manner.)

Fittings:
(Remember list)

- (1) Ceilings.
- (2) Cofferwork (laid).
- (3) Doors and Overdoors.
- (4) Fireplace and flue and chimney.
- (5) Glass.
- (6) Paintings.
- (7) Panelling.
- (8) Parquet and floors.
- (9) Plasterwork on internal walls.
- (10) Tiles and tiles (to terraces).
- (11) Screens.
- (12) Tapestries.
- (13) Miscellaneous (e.g., carvings, ironwork, knobs, etc.).



Ceiling opened for some & joists have exposed chamfered beams.

8. Condition: Fair.

9. Visited by (with dates): A.T. Philips. Oct. 1927.

10. Bibliography:

11. No. of Ordnance Sheet (6-in.): XLIV. S.W.

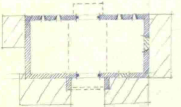
12. Signature of Investigator: A.T. Philips

B. RECORD CARD FOR SECULAR MONUMENTS.
(N.B.—Detail of special interest is to be entered here, but described fully on a separate card.)

1. Name and situation of Monument (with owner's Name and Address): Barn 15 yrs 22 g
Garn - gold

2. General appearance: (a) No. of storeys.
(b) Building materials: Stone rubble.
(c) Roofs: Stone slate.

3. Historical development (with dates and small sketch plan).
A late 17th c. barn.
In modern times lean to
roofs additions have been
built on the E, W & S sides.



4. Special features (if any).

5. Elevations: (Beginning with the main front, and mentioning, in the following order:—(a) Walls; (b) Gables; (c) Doors; (d) Windows; (e) Chimneys; (f) Rainwater heads and pipes.)


S. Elev. Double doorway has projecting porch with lean-to roof. Beam to porch is dated 1675. Door has old heavy chamfered wood frame. Remains covered by lean-to.

N. Elev. Stone rubble walls. Double door has similar frame to that on S. Roof brought down above doorway to form hood - limited to same as modern. On either side doorway are 2 slit windows.

E. Elev. Gabled. Slit window in gable above eave a s light diamond mullioned window with subsidiary diamond bellows & projecting slab label. Lower part concealed by modern lean-to.

W. Elev. Gabled. 2 slit windows in gable.

6. Grounds: (a)

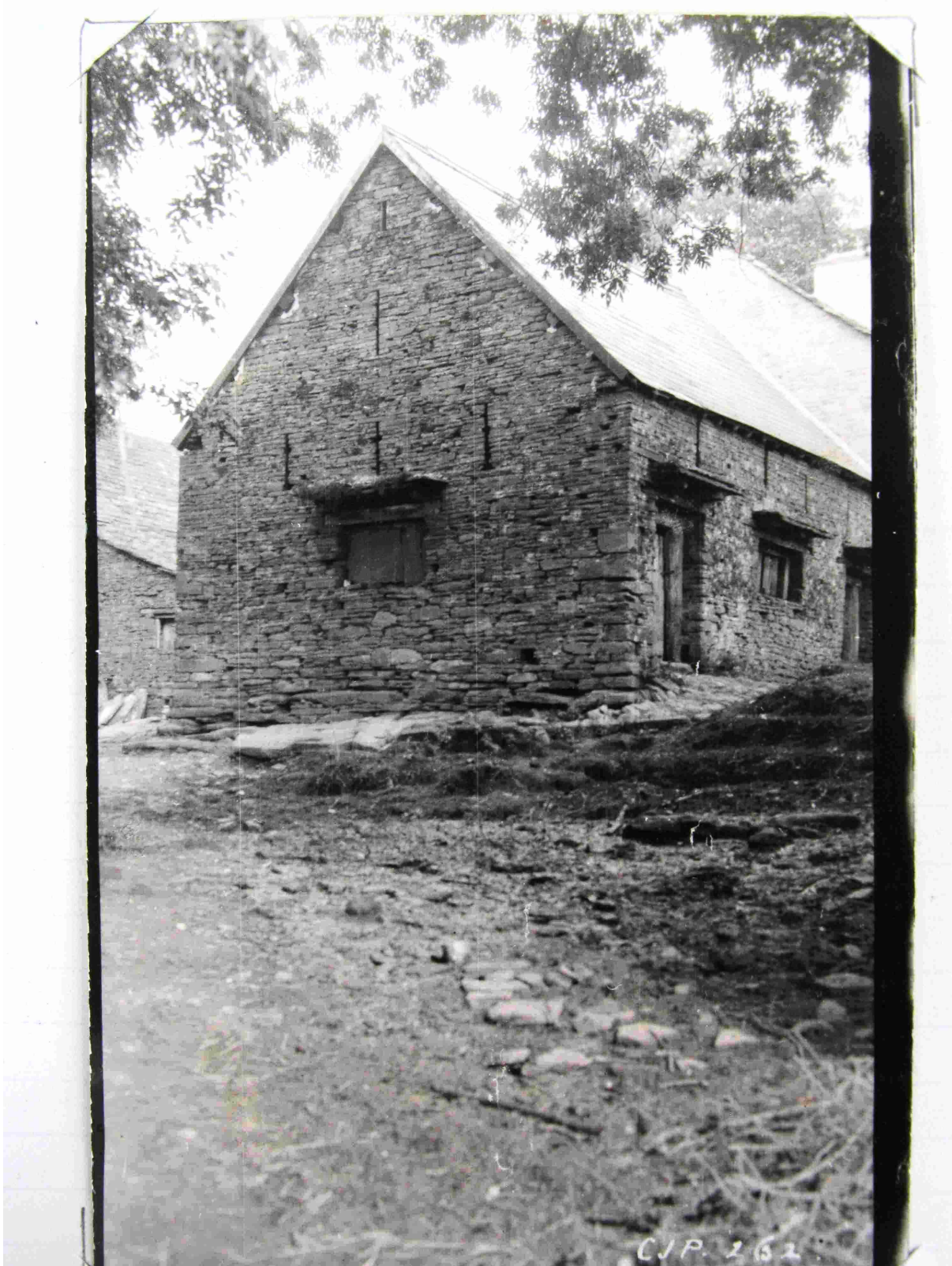


County: Shropshire
Parish: Long Tern
Sub-Commission: Shropshire
No. of Monument: 10

00,100: WY.33.341
(97,038) - 5024

The History of Ewyas Lacy

Document Record



The History of Ewyas Lacy

Document Record



The History of Ewyas Lacy

Document Record

B.

RECORD CARD FOR SECULAR MONUMENTS.

(N.B.—Detail of special interest is to be entered here, but described fully on a separate card.)

1. Name and situation of Monument (with owner's Name and Address). *Garn*

1/2 mile S.E. of Glodock Church.

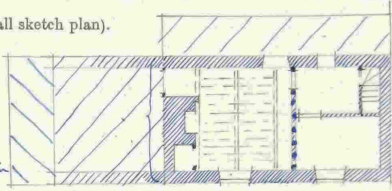
2. General appearance: (a) No. of storeys. *1 rather*

(b) Building materials. *Rubble stone*

(c) Roofs. *Mod. slates.*

3. Historical development (with dates and small sketch plan).

*An early 17th c. house.
W. portion of the
house has been re-built
in modern times
incorporating large portions
of old walls.*



4. Special features (if any).

5. Elevations: (Beginning with the main front, and mentioning, in the following order:—(a) Walls; (b) Gables; (c) Doors; (d) Windows; (e) Chimneys; (f) Rainwater heads and pipes.)

S. Elev. Dome window. Remains modernised.

N. Elev. Concealed by modern lean-to.

E. Elev. Gabled. Partly re-built.

W. Elev. Gabled. Mostly concealed by re-built portion of house.

6. Grounds:



C.P. 264.

County. *Worcestershire*
Parish. *Longton*
Sub-Commission. *Sewer*
No. of Monument. *25*

P.T.O.

(89,102). Wt. 33,340—47. 500. 12/13. A.&E.W.
(97,153). .. 5021—53. 6000. 5/14. ..

The History of Ewyas Lacy

Document Record



The History of Ewyas Lacy

Document Record

B. RECORD CARD FOR SECULAR MONUMENTS.

(N.B.—Detail of special interest is to be entered here, but described fully on a separate card.)

1. Name and situation of Monument (with owner's Name and Address), *Lower Hunt House Farm
½ mile S.E. of St. Clodock's Church*

2. General appearance: (a) No. of storeys. *Two & attics*
(b) Building materials. *Stone walls*
(c) Roofs. *modern slate*

3. Historical development (with dates and small sketch plan).
Probably an early 17th century house of rectangular plan built on the natural rock. It has been much altered in modern times & has no old external details of note. It may have been lengthened at the S.W. end at some period after its erection: for the timber framed wall at (A) on plan suggests that possibly the original building was all of this construction but there is no other evidence of this.

4. Special features (if any).

5. Elevations: (Beginning with the main front, and mentioning, in the following order:—(a) Walls; (b) Gables; (c) Doors; (d) Windows; (e) Chimneys; (f) Rainwater heads and pipes.)

S.E. front. Walls of stone rubble with modern door and windows. At the S.W. end is an external stone stair leading up to a loft forming the S.W. room of the 1st floor. The central chimney and that at the N.E. end are plain rectangular stacks of old stone on the S.E. front but of modern brick repair on the N.W. sides. The S.W. end is a blank stone gable, and at the N.E. end the chimney projects.

Timber framing at (A)

6. Gro... y, sundials, etc.

County. *Herefordshire*
Parish. *Longton*
Sub-Commission. *Leaker*
No. of Monument. *26*

P.T.O.

(89,102). Wt. 33,349—
(97,153). .. 5821—



The History of Ewyas Lacy

Document Record



Observations:

Index page is at http://www.ewyaslacy.org.uk/doc.php?d=rs_ewy_0342