



The History of Ewyas Lacy

Document Record

Held at: National Archives

Reference: AE/1-4

Source: Original Survey Particulars

Title: Digital Archive: Royal Commission on Ancient and Historical Monuments - Photographs of original survey particulars, Part 12 of 13

Place name: Craswall, Llanveynoe, Longtown, Michaelchurch Escley

Date: 1920s

Description:

Part 12: Longtown

This Digital Archive collection contains photographs of surviving parts of the initial surveys of Craswall, Michaelchurch Escley, Llanveynoe and Longtown carried out in the 1920's by the Royal Commission on Ancient and Historical Monuments. They comprise photographs, hand written survey notes and the annotated maps the surveyors used, which are held in the National Archives and formed the basis for the eventual RCAHM Reports on the buildings and structures in the parishes. The photographs have been made available by Chris Hodges, to whom we are most grateful.

ELSG Ref RCAHM Records: Longtown

120	Welsh Hunthouse 1
121	Welsh Hunthouse 2
122	Welsh Hunthouse Photo
123	Great Hunthouse 1
124	Great Hunthouse 2
125	Great Hunthouse Photo1
126	Great Hunthouse Photo2
127	Pen-yr-heol Farm
128	Pen-yr-heol Farm Photo
129	Greidol 1
130	Greidol 2
131	Greidol Photo1
132	Greidol Photo2



The History of Ewyas Lacy

Document Record

133	Greidol Photo3
134	Greidol Photo4
135	Lower House Farm 1
136	Lower House Farm 2
137	Lower House Farm Photo
138	Ruthland Farm 1
139	Ruthland Farm 2
140	Ruthland Farm Photo1
141	Ruthland Farm Photo2
142	Wern-ddu 1
143	Wern-ddu 2
144	Wern-ddu Photo
145	Belpha Farm 1
146	Belpha Farm 2
147	Belpha Farm Photo1
148	Belpha Farm Photo2
149	Cwmbologue 1
150	Cwmbologue 2
151	Cwmbologue Photo

The History of Ewyas Lacy

Document Record

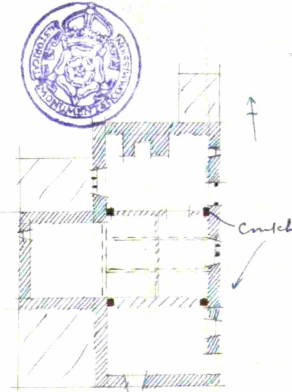
B.

RECORD CARD FOR SECULAR MONUMENTS.

(N.B.—Detail of special interest is to be entered here, but described fully on a separate card.)

- Name and situation of Monument** (with owner's Name and Address). *Welsh Hunt house 1 mile S.S.E of Clodock Church. Old house 8 yds. N.W of Modern house.*
- General appearance:** (a) No. of storeys. *1 + attic.*
(b) Building materials. *Stone rubble.*
(c) Roofs. *Stone slates + modern iron.*

- Historical development** (with dates and small sketch plan).
A late 14th or early 15th c. house. The wing on W side was probably added in 17th c. & the most S room built or largely re-modelled about the same time. In modern times lean-to roofed additions have been added against W side. (now used as store).
- Special features** (if any).



- Elevations:** (Beginning with the main front, and mentioning, in the following order:—(a) Walls; (b) Gables; (c) Doors; (d) Windows; (e) Chimneys; (f) Rainwater heads and pipes.)

East Elev. Old battered door with cover strips & planks hung on pair of strap hinges. There is a small square window with 3 light casement. Then is a dormer window battie.

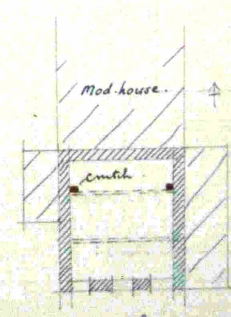
West Elev. A slight casement. Wing is gabled & has a 4 light diamond mullioned window in gable.

North Elev. Gabled. Rectangular stone chimney with one course projecting cap.

South Elev. Gabled.

- Grounds:** (a) Gardens; (b) Outbuildings; (c) Statuary, sundials, etc.

Built against S end of modern farmhouse is a curshed with left over. Roofed with stone slates. It is of late 14th or early 15th c & would appear to be a portion of larger building. The walls are of stone rubble & it is gabled at S. end the gable being weather boarded. There are 3 doorways at S end the W & E ones having old jambs. There is nothing else of interest externally. Internally ground floor ceiling has two exposed s.p.s. & o. p. and beams & there is an exposed couch.

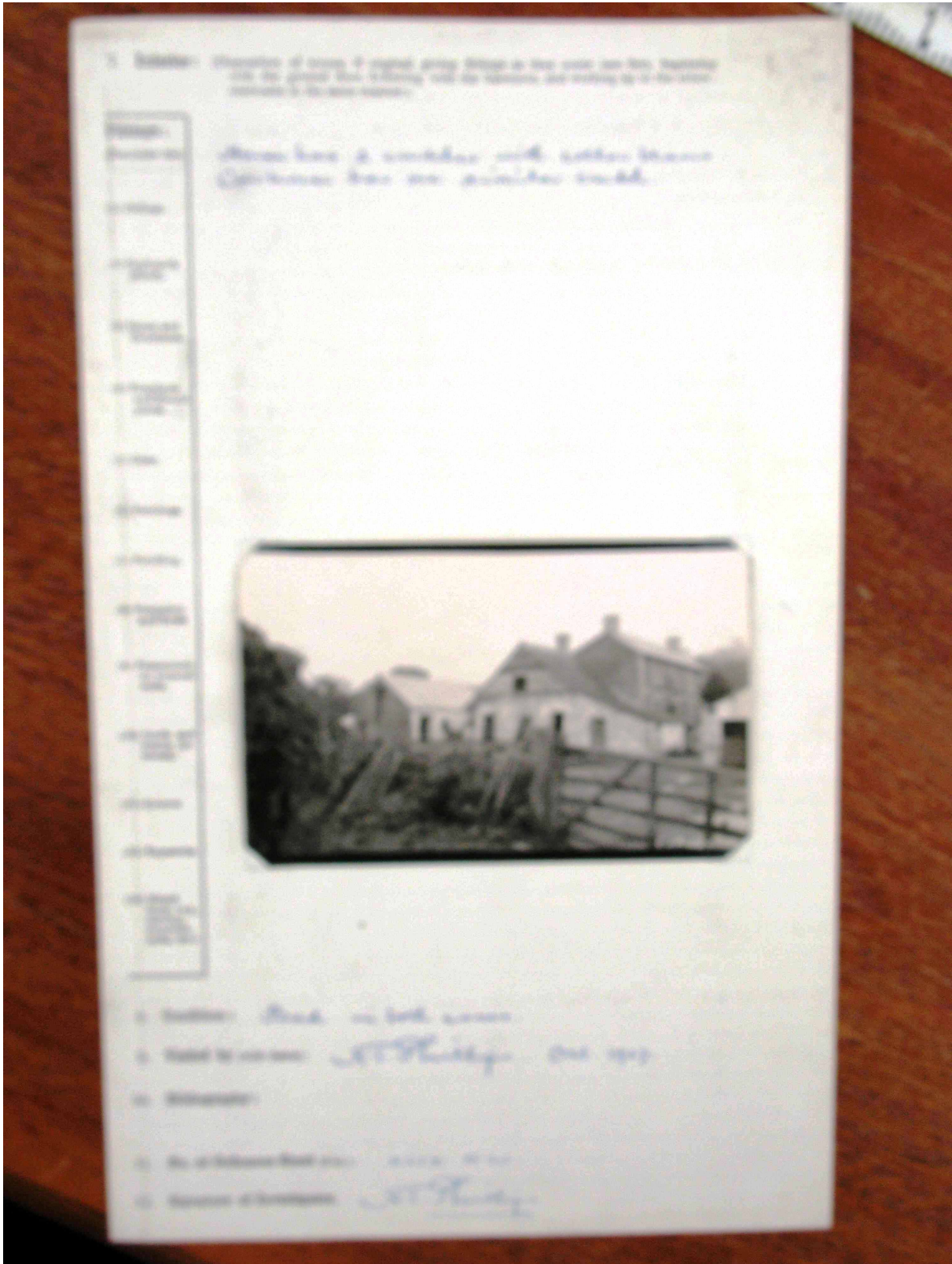


County. *Herefordshire*
Parish. *Longtown*
Sub-Commission. *Seaton*
No. of Monument *17*

(89,102). Wt. 33,349-47. 504. 12/13. A. & E. W. 1
(97,153). " 5621-53. 0000. 2/14. beams & there is an exposed couch.

The History of Ewyas Lacy

Document Record



The History of Ewyas Lacy

Document Record



The History of Ewyas Lacy

Document Record

RECORD CARD FOR SECULAR MONUMENTS.

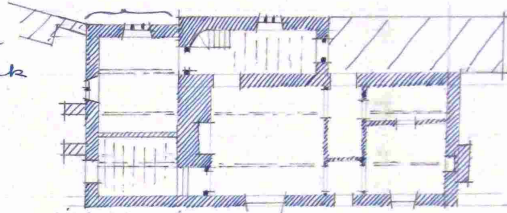
(N.B.—Detail of special interest is to be entered here, but described fully on a separate card.)

1. Name and situation of Monument (with owner's Name and Address). *Great Huntmore Farm - 1/4 miles S.E. of Clodock Church.*
2. General appearance: (a) No. of storeys. *2 attic.*
(b) Building materials. *Stone rubble.*
(c) Roofs. *Stone slates.*



3. Historical development (with dates and small sketch plan).

A 17th c. house. In modern times the portion of house N of central stack has been modernised & the roof raised, thereby destroying gable which formerly existed at S end of E elevation. A modern lean-to



4. Special features (if any). *has been added on W side.*

5. Elevations: (Beginning with the main front, and mentioning, in the following order:—(a) Walls; (b) Gables; (c) Doors; (d) Windows; (e) Chimneys; (f) Rainwater heads and pipes.)

East Elev. Stone rubble. There is a dormer window. Northern portion has been modernised while S of stack there is a 3 light wood casement frame on 1st floor & 2 light casement to attic.

N. Elev. Gabled. Rectangular outside stack with weathered sides & rectangular shaft with 4 course projecting cap probably built late in 18th c.

S. Elev. On ground floor is a 2 light casement frame on 1st floor are two 3 light windows. 2/18th c. built

West Elev. Gabled at S. Roof brought down as lean-to over staircase projection. S. of stack on both ground floor & 1st floor is a 3 light casement & a 2 light casement to attic. The staircase lean-to has a 3 light casement.

Central rectangular stack with string & mod with upper portion.

6. Grounds: (a) Gardens; (b) Outbuildings; (c) Statuary, sundials, etc.

County. *Herefordshire*

Parish. *Longton*

Sub-Commission. *Secular*

No. of Monument. *18*


The History of Ewyas Lacy

Document Record

7. Interior: (Disposition of rooms, if original, giving fittings as they occur (see list), beginning with the ground floor, following with the basement, and working up to the attic; staircases in the same manner.)

FITTINGS:
(Residual list.)

- (1) Ceilings.
- (2) Cupboards (wood).
- (3) Doors and Overdoors.
- (4) Fireplaces and Mantel pieces.
- (5) Glass.
- (6) Paintings.
- (7) Paneling.
- (8) Parquet and floors.
- (9) Plasterwork on internal walls.
- (10) Rails and boxes (internal).
- (11) Screens.
- (12) Tapestries.
- (13) Miscellaneous (e.g., carvings, ironwork, locks, etc.).



8. Condition: Good.

9. Visited by (with dates): A.T. Preece. Oct. 1927.

10. Bibliography:

11. No. of Ordnance Sheet (6-in.): X-11-N.W.


12. Signature of Investigator: A.T. Preece

RECORD CARD FOR SECULAR MONUMENTS.
(N.B.—Detail of special interest is to be entered here, but described fully on a separate card.)

1. Name and situation of Monument (with owner's Name and Address): Barn at Great Hurchuse Farm 10 yds N. of house.

2. General appearance: (a) No. of storeys. Mod. eadily by 2. Remains 1.
(b) Building materials. Stone rubble.
(c) Roofs. Modern iron.

3. Historical development (with dates and small sketch plan).
A late 17th c. barn. Modern lean-to roof addition has been built against N & S sides.



4. Special features (if any):


5. Elevations: (Beginning with the main front, and mentioning, in the following order:—(a) Walls; (b) Gables; (c) Doors; (d) Windows; (e) Chimneys; (f) Rainwater heads and pipes.)

S. Elev. Double doors with old heavy square joint segmental head to frame. 3 slit windows.
N. Elev. Uniform with S. elevation.

W. Elev. Gabled. Blocked window on ground floor. Square opening in gable vault above same.

E. Elev. Gabled. On ground level on slight casement frame formerly subdivided diamond mullioned window. In top of gable is a 3 light diamond mullioned window frame with mullion missing.

6. Grounds:



(60,101) W. 33,240—17, 505, 1213, A.S.W. (97,152) N. 5021—32, 8000, 5/14.

P.T.O.

The History of Ewyas Lacy

Document Record



The History of Ewyas Lacy

Document Record



The History of Ewyas Lacy

Document Record

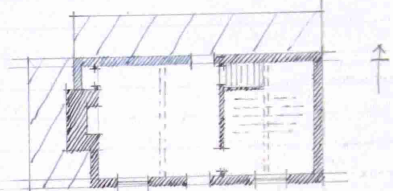
B.

RECORD CARD FOR SECULAR MONUMENTS.
(N.B.—Detail of special interest is to be entered here, but described fully on a separate card.)

1. Name and situation of Monument (with owner's Name and Address). *Pen-yr-hed Farm on Parish border 2 1/2 miles S.E. of Longton Church.*

2. General appearance: (a) No. of storeys. *2*
(b) Building materials. *Stone rubble.*
(c) Roofs. *Stone slates.*


3. Historical development (with dates and small sketch plan).
Built c. 1700. In modern times a lean-to has been built along N. side. An addition built on against W end.



4. Special features (if any)

5. Elevations: (Beginning with the main front, and mentioning, in the following order:—(a) Walls; (b) Gables; (c) Doors; (d) Windows; (e) Chimneys; (f) Rainwater heads and pipes.)
The elevations are largely concealed & modernised. It is gabled at E & W ends & at latter end is a square stone chimney stack with modern brick shaft.

6. Grounds:



County. *Merseyside*
Parish. *Longton*
Sub-Commission. *Sevens*
No. of Monument. *(12)*

P.T.O.

The History of Ewyas Lacy

Document Record



The History of Ewyas Lacy

Document Record

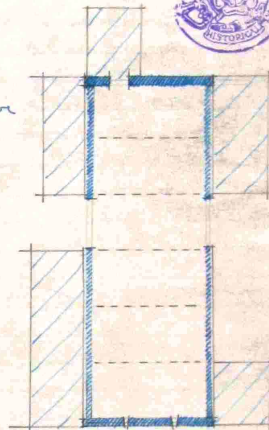
Greiddol (house) + outbuildings. about 1/2 mile E of Clodock Church.

The house as now existing is a late 18th c. building but on 1st floor it has 6 panelled doors on ground floor a moulded battened door, all of which are of 17th c. hence it is possible that the present house may incorporate portions of an earlier house.

Barn 60 yds. E.S.E. of house.

A late 17th or early 18th c. barn. In modern times additions have been built on on all sides except S end which end itself has been rebuilt in recent times.

It is a timber framed building on stone plinth & the two end walls are both entirely of rubble stonework. The roof is of stone slates.



Internally the barn is divided into 6 bays by 5 roof trusses of type >



Elevations North Gabled. Rubble stone wall with 3 slit windows in gable.
West Double door entrance. Remainder concealed by mod. additions.
East Exposed timber framing part of which is concealed by modern additions. Double door entrance.
South Gabled. Rubble stone wall re-built.

Condition of barn - poor.

Outbuilding ("Beast House") 40 yds. S.E. of house.

No. of rooms - 1 rather. walls - rubble stone. Roof - stone slates.

A 17th c. building.

Consists of ground floor with exposed beams in

(1. 633). Wt. 25,694-42. 1250. 10/13. A.&E.W.
(102,370) ,, 17,481-57. 5900. 8/14. ,,

County. Montgomery

Parish.

Longfryn


Sub-Commission.

Section

No. of Monument. 30

The History of Ewyas Lacy

Document Record

the ceiling, with hay loft above the roof being divided into 5 bays by 4 trusses of type 

Elevations

North. Gabled. Rubble stone with 2 slit windows in gable.

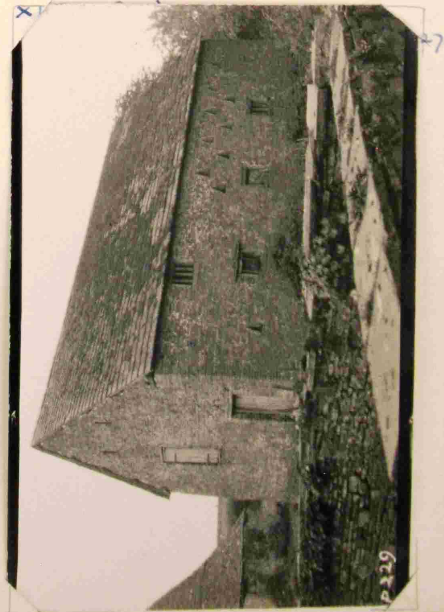
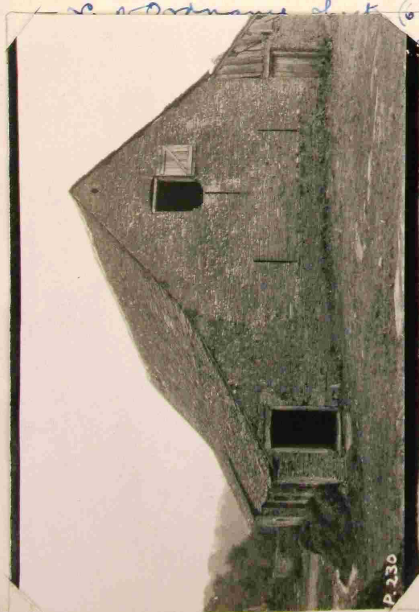
East. Rubble stone walls. 2 blocked doors. There is an old stop chamfered wood lintel over window & left has a slight stop chamfered window frame with 'diamond' mullions. She has been some re-building.

West. Ground floor has three light stop chamfered wooden window frames with diamond mullions & there is a similar window to left. 5 glaziers are ten triangular shaped slit windows in two tiers while there is one Δ shaped slit to ground floor.

South. Gabled. Stonework of gable has been re-built & has two Δ shaped slit windows.



Condition - poor.



The History of Ewyas Lacy

Document Record



The History of Ewyas Lacy

Document Record



The History of Ewyas Lacy

Document Record



The History of Ewyas Lacy

Document Record



The History of Ewyas Lacy

Document Record

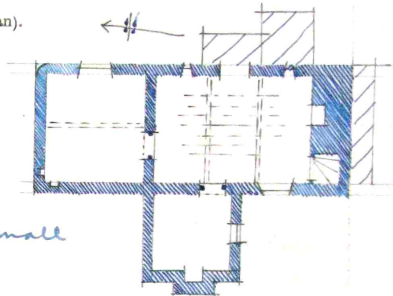
B.

RECORD CARD FOR SECULAR MONUMENTS.

(N.B.—Detail of special interest is to be entered here, but described fully on a separate card.)

1. Name and situation of Monument (with owner's Name and Address). *Lower House Farm*
2 1/4 miles E.N.E of Clodock Church.

2. General appearance: (a) No. of storeys. *1 + attic*
(b) Building materials. *Stone rubble.*
(c) Roofs. *Stone slates modern slate to N portion.*

3. Historical development (with dates and small sketch plan). 
Probably a 17th c. house which later in the same century or early in the 18th c was extended on wing built on a w. side. In modern times additions have been built on an E or small "lean-to" at S end.

4. Special features (if any).

5. Elevations: (Beginning with the main front, and mentioning, in the following order:—(a) Walls; (b) Gables; (c) Doors; (d) Windows; (e) Chimneys; (f) Rainwater heads and pipes.)

North Elev. Gabled. Re-built.

South Elev. Gabled. Some re-building chimney stack re-built. There is a blocked window on 1st floor facing.

East. Elev. There is a dormer window.

West Elev. Wing is gabled than a rectangular outside stack. There is nothing further of interest the windows etc. having been modernized.

6. Grounds: (a) Gardens; (b) Outbuildings; (c) Statuary, sundials, etc.

County. *Herefordshire* Parish. *Longtown* Sub-Division. *Secular.* No. of Monument. *31*

(89,102). Wt.33,349—47. 500. 12/13. A.&E.W.
(97,153). „ 5621—53. 6000. 5/14. „

P.T.O.

The History of Ewyas Lacy

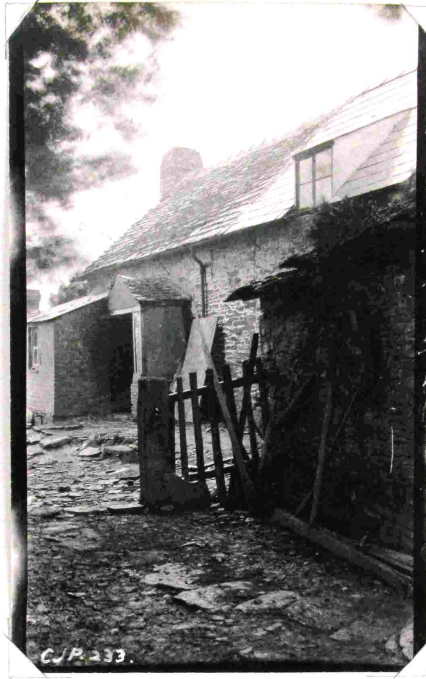
Document Record

7. Interior: (Disposition of rooms, if original, giving fittings as they occur (see list), beginning with the ground floor, following with the basement, and working up to the attics; staircases in the same manner.)

Fittings:

(Reminder list).

- (1) Ceilings
- (2) Cupboards (fixed).
- (3) Doors and Overdoors.
- (4) Fireplaces and Mantel-pieces.
- (5) Glass.
- (6) Paintings.
- (7) Panelling.
- (8) Parquetry and floors.
- (9) Plasterwork on internal walls.
- (10) Roofs and beams (internal).
- (11) Screens.
- (12) Tapestries.
- (13) Miscellaneous (e.g., carving, ironwork, locks, &c.).



The ceiling of the S. room has expanded stop chamfered ceiling beams joints. The joint N room an expanded stop chamfered beam.

8. Condition: *Fair.*

9. Visited by (with dates): *A.T. Phillips. Sept. 8th 1927.*

10. Bibliography: *XLIV. S.W.*

11. No. of Ordnance Sheet (6-in.):

12. Signature of Investigator. *A.T. Phillips.*

The History of Ewyas Lacy

Document Record



The History of Ewyas Lacy

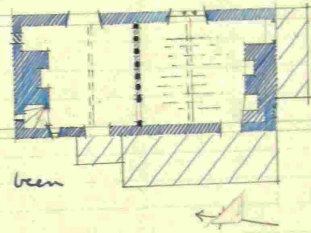
Document Record

B. RECORD CARD FOR SECULAR MONUMENTS.
(N.B.—Detail of special interest is to be entered here, but described fully on a separate card.)

1. Name and situation of Monument (with owner's Name and Address). *Ruchlan Farm. About 2 1/4 miles E.N.E of Llandovery Church.*

2. General appearance: (a) No. of storeys. *2 storeys.*
(b) Building materials. *Rubble stone.*
(c) Roofs. *Stone slates.*

3. Historical development (with dates and small sketch plan).
A 16th c. house. In the 17th c. some re-modelling was done & it is probable that the chimney stack at S end was built then & the ground floor ceiling re-constructed. In modern times an addition porch have been added on the W side.



4. Special features (if any).
Solid oak baulk staircase & all the windows are diamond mullion type though mullions have been removed modern lights inserted.

5. Elevations: (Beginning with the main front, and mentioning, in the following order:—(a) Walls; (b) Gables; (c) Doors; (d) Windows; (e) Chimneys; (f) Rainwater heads and pipes.)

N. Elev. *Gabled. Rubble stone. Square stone chimney stack with projecting cap. The timbers in gable are exposed & on ground floor there is a small square frame to staircase light & a blocked window.*

E. Elev. *Rubble stone. On ground floor are two stop chamfered wood window frames which were formerly 6 light diamond mullioned windows but which have had mullions removed & modern lights inserted. On 1st floor are two 5 light frames uniform with those on ground floor.*

W. Elev. *Wall largely re-faced & elevation mostly hidden by modern additions.*

S. Elev. *Gabled with square stone chimney stack. Some re-building to this elevation. There is a blocked opening on ground floor.*

6. Grounds: (a) Gardens; (b) Outbuildings; (c) Statuary, sundials, etc.
In barn immediately N.E. of house remains one old truss & portion rubble stone walling of an earlier (17c?) barn.

County. *Herefordshire* Parish. *Longtown* Sub-Division. *Sever* No. of Monument. *32*

(89,102) (97,153) P.T.O.

(89,102). Wt. 33, 340—47. 500. 12/13. A. & E.W.
(97,153). " 5021—53. 6000. 5/14. "


The History of Ewyas Lacy

Document Record

7. Interior: (Disposition of rooms, if original, giving fittings as they occur (see list), beginning with the ground floor, following with the basement, and working up to the attic; staircases in the same manner.)

Fittings: (Remember list)

(1) Outings
(2) Cupboards (fixed)
(3) Doors and Overdoors
(4) Fireplaces and Mantel pieces
(5) Glass
(6) Paintings
(7) Panelling
(8) Parquet and floors
(9) Plasterwork on internal walls
(10) Bells and banns (if any)
(11) Screens
(12) Tapestries
(13) Miscellaneous (e.g., serving, ironwork, locks, etc.)



Staircase has solid oak bank steps.

The roof is a plain roof with 7 trusses the two central ones being of type Δ while the two outer ones are minus Δ the trusses.

Ceilings of ground floor rooms have exposed stop chamfered beams while in the two smaller rooms the ceiling joists are also exposed.

Between the two rooms on ground floor is a timber framed partition with stop chamfered head, posts built round panel infilling.

8. Condition: Poor.

9. Visited by (with dates): A.T. Phillips, Sept. 2nd 1927.

10. Bibliography:

11. No. of Ordnance Sheet (6 in.): XLV. S.W.


12. Signature of Investigator: A.T. Phillips

B. RECORD CARD FOR SECULAR MONUMENTS.
(N.B.—Detail of special interest is to be entered here, but described fully on a separate card.)

1. Name and situation of Monument (with owner's Name and Address): *Dam & Beatt. house*
30 yds W of Rockland Farmhouse.

2. General appearance: (a) No. of storeys: *1 vaulted*
(b) Building materials: *Stone rubble.*
(c) Roofs: *Stone slates.*

3. Historical development (with dates and small sketch plan):
a 17th c. building.



4. Special features (if any):

5. Elevations: (Beginning with the main front, and mentioning, in the following order:—(a) Walls; (b) Gables; (c) Doors; (d) Windows; (e) Chimneys; (f) Sawn-iron bands and pipes.)


N. Elevation. Gabled. Rubble stone. On ground floor level is a 4 light diamond mullioned type window frame with the mullions missing.

S. Elevation. Gabled. Rubble stone. Slit window to ground floor.

E. Elevation. Rubble stone. Then an 4 doorway, three pointed have old stop chamfered frames. Battened door.

W. Elev. Rubble stone. Then an 2 slit window to ground floor.

6. Grounds:



(10,000) V.L. 23,341—25,000 (11,000) (10,000) V.L. 23,341—25,000 (11,000) (10,000) V.L. 23,341—25,000 (11,000)

Country: *Herefordshire* Parish: *Longtown* Sub-Division: *Standon* No. of Monument:

The History of Ewyas Lacy

Document Record



The History of Ewyas Lacy

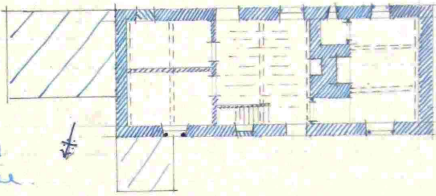
Document Record

B. RECORD CARD FOR SECULAR MONUMENTS.
(N.B.—Detail of special interest is to be entered here, but described fully on a separate card.)

1. Name and situation of Monument (with owner's Name and Address). *Wern - ddu*
1 3/4 miles N.E of Clodock Church

2. General appearance: (a) No. of storeys. *2 rathri*
(b) Building materials. *Stone rubble.*
(c) Roofs. *Stone slates.*

3. Historical development (with dates and small sketch plan).
A 16th c. house. In 1774 an addition used as cow house was built on against E end & a modern one storied addition has been built against E end of S wall.



4. Special features (if any).

5. Elevations: (Beginning with the main front, and mentioning, in the following order:—(a) Walls; (b) Gables; (c) Doors; (d) Windows; (e) Chimneys; (f) Rainwater heads and pipes.)

North Elev. Doorway has square timber joints overhead to frame with auxiliary segmental head beneath the latter. The door itself is battered, has exposed nail heads & is hung on a pair of strap hinges (lower part of door is repaired). On ground floor is a blocked window & a window with frame of a 6 light diamond mullioned window but with mullions missing. On 1st floor are three similar 6 light diamond mullioned window frame, two of the mullions still remaining in the most westerly one.

South Elev. There is a blocked doorway on ground floor & a 3 light & a 6 light diamond mullioned frame with mullions missing. Other windows are modern.

East Elev. Gabled. Exposed timbers. There is a square stone chimney stack with 3 course projecting cap on attic floor are two 6 light diamond mullioned windows with flag stone labels.

6. Grounds: (a) Gardens; (b) Outbuildings; (c) Statuary, sundials, etc.

West Elev. Gabled. Mod. lean-to roofed east shed. The central chimney stack is of stone, rectangular in plan, with projecting string & 2 course projecting cap.

County. *Merionethshire* Parish. *Longtown* Sub-Commission. *Sawley* No. of Monument. *33*

(89,102). Wt. 33,340—47. 500. 12/13. A.&E.W.
(97,153). „ 5621—53. 6000. 5/14. „

P.T.O.

The History of Ewyas Lacy

Document Record

7. Interior: (Disposition of rooms, if original, giving fittings as they occur (see list), beginning with the ground floor, following with the basement, and working up to the attics: staircases in the same manner.)

Fittings:

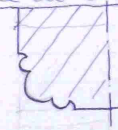
(Reminder list)

- (1) Ceilings.
- (2) Cupboards (fixed).
- (3) Doors and Overdoors.
- (4) Fireplaces and Mantel-pieces.
- (5) Glass.
- (6) Paintings.
- (7) Panelling.
- (8) Parquetry and floors
- (9) Plasterwork on internal walls.
- (10) Roofs and beams (internal).
- (11) Screens.
- (12) Tapestries.
- (13) Miscellaneous (e.g., carving, ironwork, locks, &c.).



Door to Parlor has chamfered joints & square head with auxiliary arched head to frame beneath the latter.

Ceilings of ground floor rooms have exposed beams, those in west E room being stop chamfered, those in west W room plain, those in central room moulded roof section → in this room the joints also are exposed & chamfered & have spur stops.



On 1st floor the ceilings have beams but these have been plastered.

The Roof is a collar-tie open-in-roof.

8. Condition: Good.

9. Visited by (with dates): A.T. Phillips. Oct. 1927

10. Bibliography:

11. No. of Ordnance Sheet (6-in.): X L IV S W.

12. Signature of Investigator: A.T. Phillips

The History of Ewyas Lacy

Document Record

with the ground floor, following with the basement, and working up to the attic, staircases in the same manner.)



The History of Ewyas Lacy

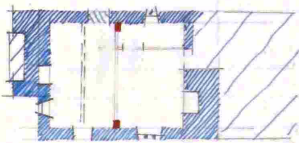
Document Record

B. RECORD CARD FOR SECULAR MONUMENTS.
(N.B.—Detail of special interest is to be entered here, but described fully on a separate card.)

1. Name and situation of Monument (with owner's Name and Address). *Belpia Farm*
2 1/4 miles N.E. of Clodock Church.

2. General appearance: (a) No. of storeys. *1 rattle.*
(b) Building materials. *Stone rubble.*
(c) Roofs. *Corrugated iron.*

3. Historical development (with dates and small sketch plan).
A portion of a 15th c. house.
Formerly the building extended further to the S. To north a modern two storied house has been built so it is impossible to say if house originally extended further at this end.



4. Special features (if any).

5. Elevations: (Beginning with the main front, and mentioning, in the following order:—(a) Walls; (b) Gables; (c) Doors; (d) Windows; (e) Chimneys; (f) Rainwater heads and pipes.)

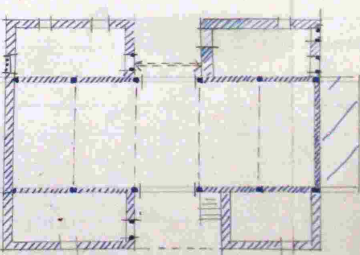
S. Elev. Gabled. External chimney stack—formed an internal stack—has on exterior an exposed chamfered lintel over former fireplace, now bricked in.

W. Elev. Blocked doorway + a 2 light wood casement window.

E. Elev. Has a 3 light casement.

N. Elev. C concealed by modern house.

Barn. 30 yds. E of house.
The barn itself was probably built c. 1600 lean-to roofed additions were added c. 1700 on each side of the double doors on both E and S sides. In modern times the S gable has been re-built + lean-to added at N. end.



Barn is of timber framing on stone plinth. lean-to of stone rubble. Roof is of modern corrugated iron.

6. Grounds: (a) Gardens; (b) Outbuildings; (c) Statuary, sundials, etc.

W. Elev. Between lean-to's roof is brought down slightly to form hood over double doors + is supported by a chamfered beam with spur stops.

N. Elev. Gabled. largely concealed. N.W lean-to has two doorways with old stop chamfered frames.

S. Elev. Gable stone. Rebuilt. S.E lean-to has 4 light drained frame window.

E. Elev. Roof brought right down between 'lean-to's' over double doors to barn.

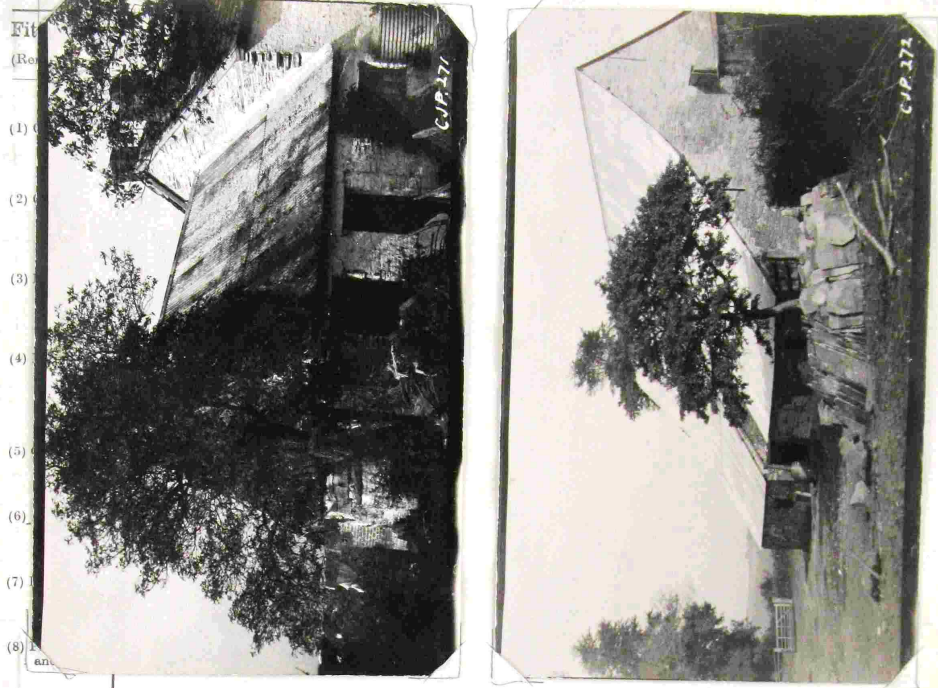
Internally divided into 5 bays by 4 trusses of type P.T.O. Condition - fair.

County. *Herefordshire* Parish. *Longton* Sub-Commission. *Sewer* No. of Monument. *34*

The History of Ewyas Lacy

Document Record

7. Interior: (Disposition of rooms, if original, giving fittings as they occur (see list), beginning with the ground floor, following with the basement, and working up to the attics; staircases in the same manner.)



- (9) Plasterwork on internal walls.
- (10) Roofs and beams (internal).
- (11) Screens.
- (12) Tapestries.
- (13) Miscellaneas (e.g., carving, ironwork, locks, &c.).

Roof has a crutch with collar beam.
Ceiling of most southward room has an exposed beam with slight cavetto moulded edges



There is an old latticed door to pantry.

- 8. Condition: *Poor.*
- 9. Visited by (with dates): *J.T. Phillips. Oct. 1927*
- 10. Bibliography:
- 11. No. of Ordnance Sheet (6-in.): *XLIV. S.W. Bam partly in XLIV. N.W.*
- 12. Signature of Investigator: *J.T. Phillips*

The History of Ewyas Lacy

Document Record



The History of Ewyas Lacy

Document Record



The History of Ewyas Lacy

Document Record

B.

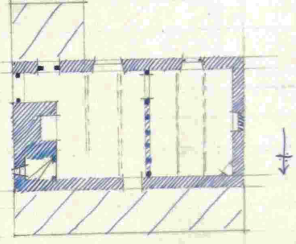
RECORD CARD FOR SECULAR MONUMENTS.

(N.B.—Detail of special interest is to be entered here, but described fully on a separate card.)

1. **Name and situation of Monument** (with owner's Name and Address). *Crombologue nearly 2 miles N.E. of Clodock Church. + Barn.*

2. **General appearance:** (a) No. of storeys. *2.*
 (b) Building materials. *Stone rubble.*
 (c) Roofs. *Stone slates.*

3. **Historical development** (with dates and small sketch plan).
Probably built in late 16th or early 17th c. Re-modelled late in 18th c + minor additions + alterations since then.




4. **Special features** (if any).

5. **Elevations:** (Beginning with the main front, and mentioning, in the following order:—(a) Walls; (b) Gables; (c) Doors; (d) Windows; (e) Chimneys; (f) Rainwater heads and pipes.)

East Elev. Gabled. Small single light window to stairs with mod. sash. Square chimney, upper part of which is of modern brick.
South Elev. Modernised but one window on 1st floor has old frame of a 3 light diamond mullioned window with mullions missing.
West Elev. Gabled. Blocked windows on ground + 1st floor.
North Elev. Modern lean-to + chimney stack.

The Barn. 5 yds. E of house on opposite side of road. Walls of barn are timber framed at sides, the N end is rubble stone + at S end is rubble stone walled stable with loft over. Roof is of stone slates.



6. **Grounds:** (a) Gardens; (b) Outbuildings; (c) Statuary, sundials, etc.
a late 17th or early 18th c. barn.

East Elev. Stable walls rubble stone contains a 5 light diamond mullioned window. Barn has double door with lean-to dormer head. Walls of barn weatherboarded. Stone plinth.
West Elev. Walling similar to that on East. Stable has 3 dormers with stop chamfered wood frames + metal Nave has battened door hung on strap hinges. Dormers have flag stone labels. Plinth largely re-built.
N. Elev. Concrete. S. Elev. Stone rubble gabled. Slit window on ground floor regular opening to loft.

(89,102). Wt. 33,349. 47. 500. 12/13. A.&E.W.
 (97,153). " 5621-53. 6000. 5/14. " *Internally barn has 2 tiers of type Δ Condition fair*

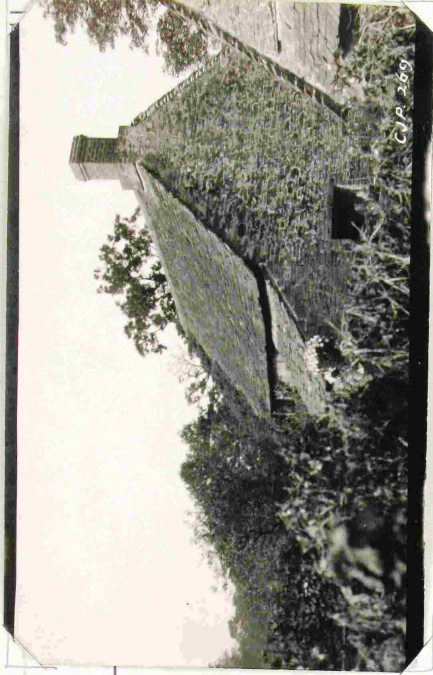
P.T.O.

County. *Shropshire*
 Parish. *Long Eaton*
 Sub-Commission. *Secular*
 No. of Monument. *35*

The History of Ewyas Lacy

Document Record

7. Interior: (Disposition of rooms, if original, giving fittings as they occur (see list), beginning with the ground floor, following with the basement, and working up to the attics; staircases in the same manner.)



- (9) Plasterwork on internal walls.
- (10) Roofs and beams (internal).
- (11) Screens.
- (12) Tapestries.
- (13) Miscellanea (e.g., carving, ironwork, locks, &c.).

Ceilings of ground floor rooms have exposed beams.

Between the two rooms is partition - timber framed - with wood panels between posts.

Down way from house to mod. lean-to on S has an old stop chamfered wood frame.



8. Condition: *Good.*

9. Visited by (with dates): *J. T. Phillips. Oct. 1927.*

10. Bibliography:

11. No. of Ordnance Sheet (6-in.): *XLIV. N.W.*

12. Signature of Investigator. *J. T. Phillips*

The History of Ewyas Lacy

Document Record





The History of Ewyas Lacy

Document Record

Observations:

Index page is at http://www.ewyaslacy.org.uk/doc.php?d=rs_ewy_0342