



The History of Ewyas Lacy

Document Record

Held at: National Archives

Reference: AE/1-4

Source: Original Survey Particulars

Title: Digital Archive: Royal Commission on Ancient and Historical Monuments - Photographs of original survey particulars, Part 13 of 13

Place name: Craswall, Llanveynoe, Longtown, Michaelchurch Escley

Date: 1920s

Description:

Part 13: Longtown

This Digital Archive collection contains photographs of surviving parts of the initial surveys of Craswall, Michaelchurch Escley, Llanveynoe and Longtown carried out in the 1920's by the Royal Commission on Ancient and Historical Monuments. They comprise photographs, hand written survey notes and the annotated maps the surveyors used, which are held in the National Archives and formed the basis for the eventual RCAHM Reports on the buildings and structures in the parishes. The photographs have been made available by Chris Hodges, to whom we are most grateful.

ELSG Ref RCAHM Records: Longtown

152	Upper Bryn 1
153	Upper Bryn 2
154	Upper Bryn Photo1
155	Upper Bryn Photo2
156	Barn at Old Bryn
157	Barn at Old Bryn Photo
158	Pent-yr-ynys 1
159	Pent-yr-ynys 2
160	Pent-yr-ynys Photo
161	Grove Farm 1
162	Grove Farm 2
163	Grove Farm Photo
164	Court Lacca



The History of Ewyas Lacy

Document Record

165	Court Lacca Photo
166	Wain Farm 1
167	Wain Farm 2
168	Wain Farm 3
169	Wain Farm Photo1
170	Wain Farm Photo2
171	Celyn 1
172	Celyn 2
173	Celyn Photo
174	Middle Trewern 1
175	Middle Trewern 2
176	Middle Trewern 3
177	Middle Trewern Photo
178	Upper Trewern
179	Trewern 1
180	Trewern 2
181	Trewern Photo
182	Tanhouse Farm 1
183	Tanhouse Farm 2
184	Tanhouse Farm Photo
185	Llanwonnog Farm 1
186	Llanwonnog Farm 2
187	Llanwonnog Farm Photo

The History of Ewyas Lacy

Document Record

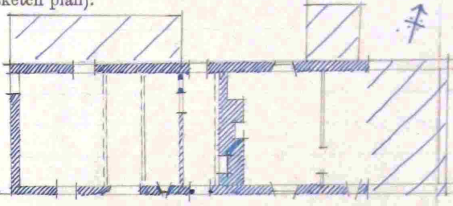
RECORD CARD FOR SECULAR MONUMENTS.

(N.B.—Detail of special interest is to be entered here, but described fully on a separate card.)

1. Name and situation of Monument (with owner's Name and Address). *Upper Bryn
nearly 1/4 mile N.N.E. of Clodock Church.*

2. General appearance: (a) No. of storeys. *2.*
 (b) Building materials. *Stone rubble*
 (c) Roofs. *Stone slates. Corrugated iron to re-modelled portion.*

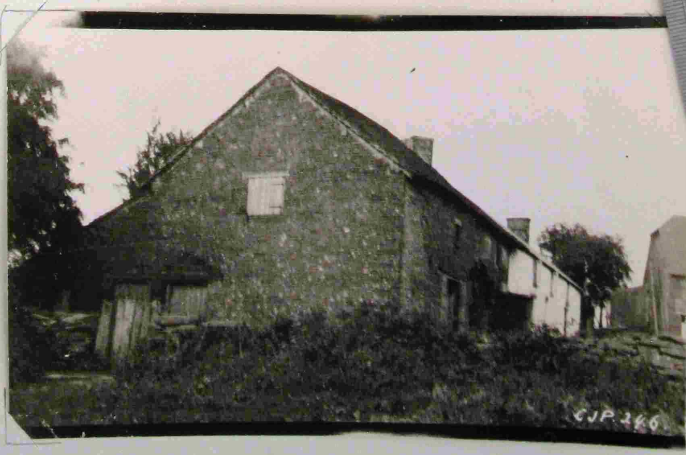
3. Historical development (with dates and small sketch plan).
*Ante 16th or early 17th c.
house. In modern times
that portion w central
stack has been turned into
a barn store, while E of
stack apart from a portion
of original walling the
house has been entirely re-built & extended.*



4. Special features (if any)

5. Elevations: (Beginning with the main front, and mentioning, in the following order:—(a) Walls; (b) Gables; (c) Doors; (d) Windows; (e) Chimneys; (f) Rainwater heads and pipes.)
*Gabled at W end, concealed by mod. extension
at E end, there is nothing of interest in
the elevations except that barn portion has
on both N & S sides a battered door with old
chamfered frame.
The central stack is diagonal & the upper
part re-built in modern bricks*

6. Grounds:



County. *Shropshire* Parish. *Longton* Sub-Commission. *Seaton* No. of Monument. *Seaton*

P.T.O.

The History of Ewyas Lacy

Document Record

7. Interior: (Disposition of rooms, if original, giving fittings as they occur (see list), beginning with the ground floor following with the basement, and working up to the attic; staircases in the same manner.)

Fittings:
(Residue list)

- (1) Cellars
- (2) Cupboards (fixed)
- (3) Doors and Overdoors
- (4) Fireplaces and Mantel pieces
- (5) Glass
- (6) Paintings
- (7) Panelling
- (8) Floorings and Floors
- (9) Plasterwork on internal walls
- (10) Roofs and Rafters (internal)
- (11) Screens
- (12) Tapestries
- (13) Miscellaneous (e.g. sundials, ironwork, tools, etc.)

In barn is timber framed partition with stop chamfered framing along wood panels. In this partition is a doorway with arched head.

8. Condition: *Good*

9. Visited by (with dates): *J.T. Philips*

10. Bibliography:

11. No. of Ordnance Sheet (6 in.): *XLV. SW*


12. Signature of Investigator: *J.T. Philips*

RECORD CARD FOR SECULAR MONUMENTS.
(N.B.—Detail of special interest is to be entered here, but described fully on a separate card.)

1. Name and situation of Monument (with owner's Name and Address): *Barn at Upper Lacy*
25 yds. S.E. of house

2. General appearance: (a) No. of stories.
(b) Building materials: *Stone rubble timber framed on stone plinth*
(c) Roofs: *Stone slates*

3. Historical development (with dates and small sketch plan):
a 17th c. barn. In modern times a lean-to roofed addition has been built on at West.



4. Special features (if any)

5. Elevations: (Beginning with the main front, and mentioning, in the following order—(a) Walls; (b) Gables; (c) Doors; (d) Windows; (e) Chimneys; (f) Rainwater heads and pipes.)


North Elev. Most interesting bay is gable rubble above a light diamond mullioned window. Remains timber framed on carved with modern siding.

South Elev. Uniform with N. Elev. but has a slit window in lieu of gable end.

East Elev. Gables. Stone rubble. In gable is a square opening with old timber frame modern slates. On ground level is a light diamond mullioned window.

West Elev. Gabled. Almost entirely concealed by lean-to.

6. Grounds:



612.268 T.O.

The History of Ewyas Lacy

Document Record



The History of Ewyas Lacy

Document Record

lean-to



The History of Ewyas Lacy

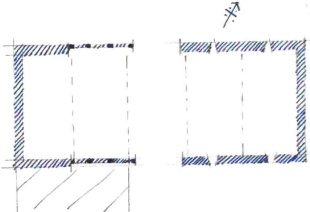
Document Record

B. RECORD CARD FOR SECULAR MONUMENTS.
(N.B.—Detail of special interest is to be entered here, but described fully on a separate card.)

1. **Name and situation of Monument** (with owner's Name and Address). *Barn at 'Old Bryn' nearly 1 1/4 miles N.N.E. of Clodock Church.*

2. **General appearance:** (a) No. of storeys. (b) Building materials. *Stone rubble, + timber frame on stone plinth* (c) Roofs. *Stone slates.*

3. **Historical development** (with dates and small sketch plan).
A late 17th c. barn



4. **Special features** (if any).

5. **Elevations:** (Beginning with the main front, and mentioning, in the following order:—(a) Walls; (b) Gables; (c) Doors; (d) Windows; (e) Chimneys; (f) Rainwater heads and pipes.)


N. Elev. Stone rubble largely re-built. Some exposed timber framing in one bay with slab stone infilling between framing. Two slit windows.

S. Elev. Uniform with N side except that the double doors have dormer head + there is a modern 'lean-to' against two most westerly bays.

E. Elev. Gabled. Rubble stone. Old timber frame to opening in gable.

W. Elev. Stone. Gabled.

6. **Grounds:**



P.T.O.

County. *Herefordshire*
Parish. *Longtown*
Sub-Commis. *under.*
No. of Monument. *37*

(89.102). Wt. 33,349—47. 500. 12/13. A.&E.W.
..... 29 4000 5/14. ..

The History of Ewyas Lacy

Document Record



The History of Ewyas Lacy

Document Record

B.

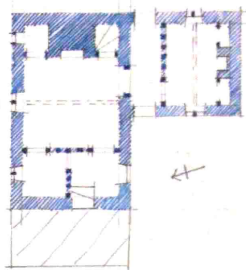
RECORD CARD FOR SEUL & MONUMENTS.

(N.B.—Detail of special interest is to be entered here, but described fully on a separate card.)

1. Name and situation of Monument (with owner's Name and Address). *Peat-yo-yngs easty Esceley Brook 1/2 mile E.S.E of Church.*

2. General appearance: (a) No. of storeys. *1 rathie.*
 (b) Building materials. *Stone rubble.*
 (c) Roofs. *Modern slates.*

3. Historical development (with dates and small sketch plan).
A late 16th c. house. Circa 1700 some re-modelling was done the wing being either built at this time or largely re-built incorporating an earlier addition to the original house. In modern times minor alterations have been made.

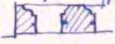


4. Special features (if any).
In panelled partition is a door with segmental cutting in both joints of frame to (?) admit of barrel passage through door.

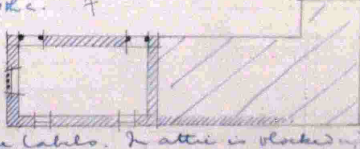
5. Elevations: (Beginning with the main front, and mentioning, in the following order:—(a) Walls; (b) Gables; (c) Doors; (d) Windows; (e) Chimneys; (f) Rainwater heads and pipes.)

S. Elev. Stone rubble wall. Dormer window. Wing is gabled + face of stonework plastered.
W. Elev. Gabled. Square stone chimney stack with projecting cornice at base + cap. Lower portion hidden by modern addition. There is a 2 light window with wood frame + mullions.
N. Elev. Stone rubble. There are 2/2 light casements with wood frames + mullions, the more westerly having diamond balusters between mullions + frame. In cupboard is frame of former 4 light diamond mullioned window with stone flag label above.
E. Elev. Gable. A dormer window on ground floor a 2 light casement.

Note all window frames + mullions are of c 1700 type plain on outside + moulded internally →



6. Grounds: (a) Gardens; (b) Outbuildings; (c) Statuary, sundials, etc.
20 yds. S.E. of house is outbuilding. 17th c. Stone rubble walls. Stone slate. Purlin roof. 1 story rathie. N. Elev. has 2 doorways with battened doors hung in stop change. frames + sills same as flag stone labels. Rathie is blocked up with old frame.



W. Elev. Gabled. On ground floor is a 4 light diamond mullioned window with label above on attic level are two 'alibi'.
S. Elev. 2 windows opening without frames. E. Elev. Curved.

The beam at E end has old wall on S. side P.T.O.

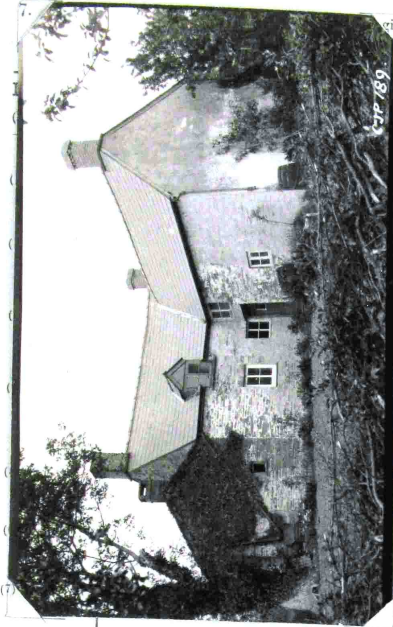
The beam at E end has old wall on S. side P.T.O.

County. *Herefordshire*
 Parish. *Longtown*
 Sub-Commission. *Sander.*
 No. of Monument. *38*

(89,102) Ws. 33,349-47. 500. 12/13. A.&E.W.
 (97,153) .. 5021-53. 0000. 8/14. .. + 2 old tile beams but for rest has been rebuilt.

The History of Ewyas Lacy

Document Record



- (8) Parquetry and floors
- (9) Plasterwork on internal walls.
- (10) Roofs and beams (internal).
- (11) Screens.
- (12) Tapestries.
- (13) Miscellaneous (e.g., carving, ironwork, locks, &c.).

a ground floor
 All partitions, hearth, chamfered posts & wood panels between same.
 Doorframes to stairs & passage have segmental heads. In pantry partition is doorframe with segmental head & shaped joints & heavy battened door
 16th c.
 Door to stairs (stone stairs) has 17th c. battened door hanging on strap hinges.
 Door from room to passage is a plain battened door.
 In wing, on either side of fireplace, are cupboards with early 18th c. panelled doors & framing.
 Pantry window has pair of battened shutters, internally, hung on strap hinges.

Ceilings of ground floor rooms have exposed (in kitchen) chamfered beams with moulded stops. Exposed just

- 8. Condition: Fair.
- 9. Visited by (with dates): A.T. Phillips. May 1927.
- 10. Bibliography:
- 11. No. of Ordnance Sheet (6-in.): XLIII. S.E.
- 12. Signature of Investigator. A.T. Phillips

The History of Ewyas Lacy

Document Record



The History of Ewyas Lacy

Document Record

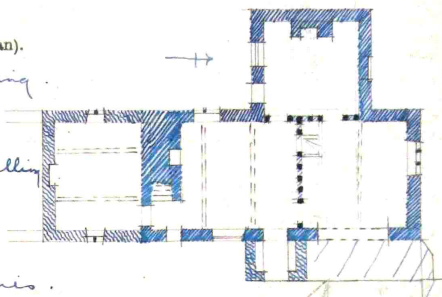
RECORD CARD FOR SECULAR MONUMENTS.

(N.B.—Detail of special interest is to be entered here, but described fully on a separate card.)

1. **Name and situation of Monument** (with owner's Name and Address). *Grove Farm*
between road + Ezeley Brook 500 yds ENE of church.

2. **General appearance:** (a) No. of storeys. *2*
(b) Building materials. *Stone rubble*
(c) Roofs. *Modern slates.*

3. **Historical development** (with dates and small sketch plan).
A late 16th or early 17th c. building.
In 1707 a room was added at the S end + the entrance porch was built + some re-modelling done internally. In 1892 some re-facing was done to walls, some new windows inserted + the walls heightened to form 2 stories.



4. **Special features** (if any).

5. **Elevations:** (Beginning with the main front, and mentioning, in the following order:—(a) Walls; (b) Gables; (c) Doors; (d) Windows; (e) Chimneys; (f) Rainwater heads and pipes.)


East Elev. Walls re-faced. 2 light casement to S room. Gabled porch having set in gable a stone slab inscribed as in sketch
valve another stone inscribed F.P. 1892.

South Elev. Gabled. Rectangular outside stack with weathered sides + projecting 3 course cap. Wing has old chamfered door frame + a 2 light transomed wood frame window + a 2 light casement with wood frame.

West Elev. Projecting wing is gabled. S room gable has 2 light old casement frame (wood)

North Elev. Gabled. There is, on ground floor, a 3 light casement with old frame + mullions. In wing there is a blocked window on ground floor.

6. **Grounds:** (a) Gardens; (b) Outbuildings; (c) Statuary, sundials, etc.



County. *Shropshire*
Parish. *Longton*
Sub-Commission. *Sawley*
No. of Monument. *63*

P.T.O.

(89,102). Wt. 33,349—47. 500. 12/13. A.&E.W.
(97,153). .. 5621—53. 6000. 5/14. ..

The History of Ewyas Lacy

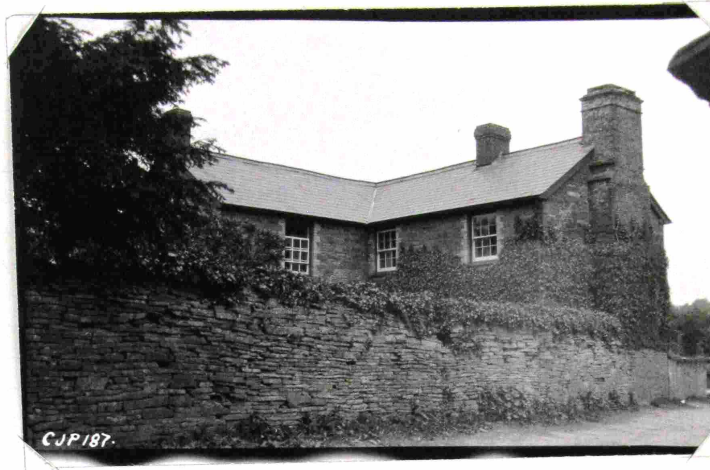
Document Record

7. **Interior:** (Disposition of rooms, if original, giving fittings as they occur (see list), beginning with the ground floor, following with the basement, and working up to the attics; staircases in the same manner.)

Fittings:

(Reminder list).

- (1) Ceilings.
- (2) Cupboards (fixed).
- (3) Doors and Overdoors.
- (4) Fireplaces and Mantel-pieces.
- (5) Glass.
- (6) Paintings.
- (7) Panelling.
- (8) Parquetry and floors.
- (9) Plasterwork on internal walls.
- (10) Roofs and beams (internal).
- (11) Screens.
- (12) Tapestries.
- (13) Miscellanea (e.g., carving, ironwork, locks, &c.).



In original partition plan the 3 rooms are divided from each other by framed partitions with wood panels between the posts.

Ceilings of all rooms, except wing, have exposed chamfered beams with moulded stops.

8. **Condition:** *Good.*

9. **Visited by (with dates):** *A.T. Phillips May 1927.*

10. **Bibliography:**

11. **No. of Ordnance Sheet (6-in.):** *XLIII. S.E.*

12. **Signature of Investigator.** *A.T. Phillips.*

The History of Ewyas Lacy

Document Record

staircases in the same manner.)



The History of Ewyas Lacy

Document Record

B.

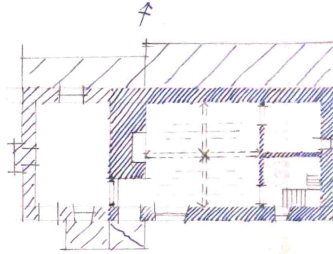
RECORD CARD FOR SECULAR MONUMENTS.

(N.B.—Detail of special interest is to be entered here, but described fully on a separate card.)

1. Name and situation of **Monument** (with owner's Name and Address). *Court Lacey*
1 mile N of Longton Church.
2. **General appearance:** (a) No. of storeys. *1 + attic.*
(b) Building materials. *stone rubble.*
(c) Roofs. *stone slates.*

3. **Historical development** (with dates and small sketch plan).

*an early 17th c. house.
late in 18th c. it was
extended towards the West.
modern additions built
on along N side & porch
small addition added
on S.*



4. **Special features** (if any)

5. **Elevations:** (Beginning with the main front, and mentioning, in the following order:—(a) Walls; (b) Gables; (c) Doors; (d) Windows; (e) Chimneys; (f) Rainwater heads and pipes.)

*The house is gabled at E & W ends & there
is a domed window on S side. For the rest
it has been modernised & there is nothing
particular to note.*

*The central stack is of rubble stone & upon
a plan with its upper portion rebuilt.*

6. **Grounds:** (e)



County. *Hampshire*
Parish. *Longton*
Sub-Commission. *Senior*
No. of Monument. *41*

P.T.O.

The History of Ewyas Lacy

Document Record



The History of Ewyas Lacy

Document Record

B.

RECORD CARD FOR SECULAR MONUMENTS.

(N.B.—Detail of special interest is to be entered here, but described fully on a separate card.)

- Name and situation of Monument** (with owner's Name and Address). *Wain Farm*
1/4 mile N.N.E of Longtown Church.
- General appearance:** (a) No. of storeys. *2 + attic*
(b) Building materials. *Stone rubble.*
(c) Roofs. *Modern slates.*
- Historical development** (with dates and small sketch).
A mid 17th c. house but probably incorporates an earlier house. The most notable room would appear to have been added c. 1700. In modern times there have been minor alterations.
- Special features** (if any). + additions
built on against W wall at N.E. angle.
- Elevations:** (Beginning with the main front, and mentioning, in the following order:—(a) Walls; (b) Gables; (c) Doors; (d) Windows; (e) Chimneys; (f) Rainwater heads and pipes.)
- Grounds:** (a) Gardens; (b) Outbuildings; (c) Statuary, sundials, etc.)

East Elev. Stone rubble. Battened door hung on pair of strap hinges + to stop chamfered frame. On ground floor is a blocked window + another blocked opening. On 1st floor a blocked window + a dormer window to the attic.

South Elev. Stone rubble wall. Some rebuilding. Cellar wing has blocked window + battened door in old frame on ground floor. Upper floor of this wing partly re-built.

West Elev. Wing gabled + has on ground floor a 4 light window with moulded frame + mullions. Rectangular stack with upper part re-built. There is a single light window to stairs containing old glass. Remainder mostly concealed by lean-to but within latter can be seen on both ground + 1st floor a blocked window + on latter floor also a 3 light window with moulded frame + mullions. Projecting cellar wing is gabled + re-built.

North Elev. Gabled. Square stack re-built. The West window has a lean-to roof of stone slates + has a blocked doorway + a 2 light window of c. 1700.

In outbuilding opposite E elevation is a re-used 17th c. chamfered door frame.

(89,102). Wt. 33,349—47. 600. 12/13. A.&E.W.
(97,153). " 5621—52. 6000. 5/14. "

P.T.O.

County. *Shropshire*
Parish. *Longtown*
Sub-Commission. *Sever*
Sub-Commission. *Sever*
No. of Monument. *13*
No. of Monument.

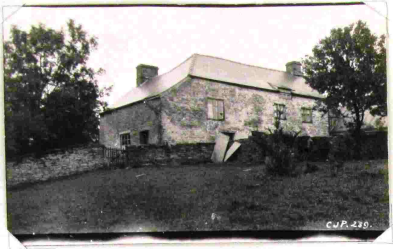
The History of Ewyas Lacy

Document Record

7. Interior: (Disposition of rooms, if original, giving fittings as they occur (see list), beginning with the ground floor, following with the basement, and working up to the attic; staircases in the same manner.)

Fittings:
(remainder list)

(1) Cellings
(2) Cupboards (Wood)
(3) Doors and Overdoors
(4) Fireplaces and related pieces
(5) Glass
(6) Paintings
(7) Tapestries
(8) Parquet and floors
(9) Plasterwork on interior walls
(10) Stairs and landings (Stones)
(11) Screens
(12) Tapestries
(13) Miscellaneous (e.g., carvings, doorwork, locks, etc.)



SEPT 1927

Downy to Panty has arched head frame with stop chamfered joints.
Downy from S room to entrance passage has a heavy wood chamfered frame. Platted door being a hinge type skin in shell.
Between N store & mod. entrance is battened door with stop chamfered frame.
Ceiling of ground floor rooms have stop chamfered support beams except in case of N entrance.

8. Condition: Fair.

9. Visited by (with dates): A. T. Phillips. Sept. 1927.

10. Bibliography:

11. No. of Ordnance Sheet (6-in.): XLIII. N.E.

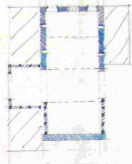
12. Signature of Investigator: A. T. Phillips

RECORD CARD FOR SECULAR MONUMENTS.
(N.B.—Detail of special interest is to be entered here, but described fully on a separate card.)

1. Name and situation of Monument (with owner's Name and Address): Barn at Ewyas Lacy Farm 40 yds. S.W. of house.

2. General appearance: (a) No. of storeys: 1
(b) Building materials: Stone rubble & timber frame on stone plinth
(c) Roofs: Stone modern slates.

3. Historical development (with dates and small sketch plan):
A 17th c. barn. The gabled part on the N side was probably added slightly later in the same century. Late in 18th c. some modern timbers lean-to roofed additions have been built on against both N & S sides, the W wall re-built.



4. Special features (if any):

5. Elevations: (Beginning with the main front, and mentioning, in the following order:—(a) Walls; (b) Gables; (c) Doors; (d) Windows; (e) Chimneys; (f) Rainwater heads and pipes.)

N. Elev. Projecting gabled part of timber framing covered with modern weather boarding. Remainder concealed by lean-to.

E. Elev. Gabled. Lower half of wall is stone rubble, the upper part being timber framed & covered with boarding at ground level is a battened door with stop chamfered frame & simple rivets frame braced up. Between these doors is a blocked in N.

W. Elev. Gabled. Stone rubble re-built.

S. Elev. E of downy wall is rubble hid concealed by lean-to. W of door wall is timber framed covered with weather boarding & is a stone plinth.

6. Grounds: (a) Gardens; (b) Outbuildings; (c) Statuary, sundials, etc.

County: Shropshire Parish: Ewyas Lacy Sub-Commission: Severn No. of Monument:

(60,102). Wt. 32,345—47. 500. 12/13. A.A.R.W. (97,153). " 3621—38. 6900. 5/14. " P.T.O.

The History of Ewyas Lacy

Document Record

Int

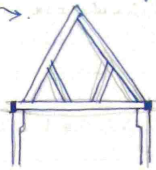

tings

7. Interior: (Disposition of rooms, if original, giving fittings as they occur (see list), beginning with the ground floor, following with the basement, and working up to the attics: staircases in the same manner.)

	Fittings:
Reminder	(Reminder list).
Ceilings	(1) Ceilings.
Cupboards (fixed)	(2) Cupboards (fixed).
Doors and Overdoors	(3) Doors and Overdoors.
Fireplaces and Mantel-pieces	(4) Fireplaces and Mantel-pieces.
Glass	(5) Glass.
Paintings	(6) Paintings.
Panelling	(7) Panelling.
Parquet and floors	(8) Parquetry and floors.
Plaster on internal walls	(9) Plasterwork on internal walls.
Roofs and beams (internal)	(10) Roofs and beams (internal).
Screens	(11) Screens.
Tapes	(12) Tapestries.
Miscellaneous ironwork, locks, &c.	(13) Miscellaneous (e.g., carving, ironwork, locks, &c.).

Internally divided into 4 bays by 3 roof trusses of type →

In 2 small E bays are two tie beams some 6ft above floor level which formerly probably supported a floor forming a small 'beast-house' at ground level, lighted by 2 slit windows in the N-S walls.

8. Condition: Poor.

9. Visited by (with dates): J.T. Phillips Sept. 1927.

10. Bibliography:

11. No. of Ordnance Sheet (6-in.): XLIII. N.E.

12. Signature of Investigator: J.T. Phillips

The History of Ewyas Lacy

Document Record

(taircases in the same manner.)



The History of Ewyas Lacy

Document Record



The History of Ewyas Lacy

Document Record

B.

RECORD CARD FOR SECULAR MONUMENTS.

(N.I. Detail of special interest is to be entered here, but described fully on a separate card)

1. Name and situation of Monument (with owner's Name and Address). *Celyn*

2 miles N.N.E of Clodock Church.

2. General appearance: (a) No. of storeys. *1 attic.*

(b) Building materials. *Stone rubble.*

(c) Roofs. *Stone slates on N. Mod. slates on S.*

3. Historical development (with dates and small sketch plan).

A late 14th or early 15th c. house.

It was much remodelled

during the middle of the 17th c

when also the extension

at E end was probably added

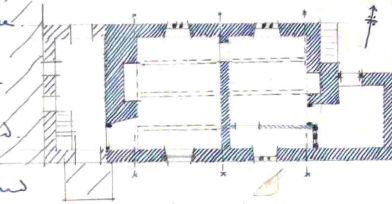
c. 1700 and a modern room was added

In modern times a new

wing has been built at the west

& the old house connected to same by a broad passage,

4. Special features (if any). *though the latter may possibly incorporate part of the old house.*



5. Elevations: (Beginning with the main front, and mentioning, in the following order:—(a) Walls; (b) Gables; (c) Doors; (d) Windows; (e) Chimneys; (f) Rainwater heads and pipes.)

North Elev. *Stone rubble. On ground floor are two 3 light casements the more westerly of which has moulded frame & mullions, while the other has plain frame externally but moulded on inside. There is a dormer window to attic. In projecting portion at E is a doorway with old stop chamfered head.*

East Elev. *Gabled. Stone rubble. Outside square stack with offsets besides & square shaft with 3 course projecting cap. Outside stone skirtings to left, above the modern door of which is an old window frame now boarded up. The extension is gabled; the gable being of timber framing & has a 2 light window. The whole wall below gable level is of stone & concealed by natural slope of ground.*

South Elev. *Modern porch. Stone rubble. On ground floor are two windows, the more westerly of which has had a modern frame inserted in it, while the other has a 3 light wood frame of c. 1700. There is a 2 light dormer window to attic.*

6. Grounds: (a) Gardens; (b) Outbuildings; (c) Statuary, sundials, etc.

West Elev. *Concealed.*

The central stack is square in plan & has a 3 course projecting stone cap.



County. *Herefordshire* Parish. *Longtown* Sub-Commission. *Saunter* No. of Monument. *44*

The History of Ewyas Lacy

Document Record

7. Interior: (Disposition of rooms, if original, giving fittings as they occur (see list), beginning with the ground floor, following with the basement, and working up to the attics; staircases in the same manner.)

Fittings:

(Reminder list).

(1) Ceilings.

(2) Cupboards (fixed).

(3) Doors and Overdoors.

(4) Fireplaces and Mantel-pieces.

(5) Glass.

(6) Paintings.

(7) Panelling.

(8) Parquetry and floors.

(9) Plasterwork on internal walls.

(10) Roofs and beams (internal).

(11) Screens.

(12) Tapestries.

(13) Miscellaneous (e.g., carving, ironwork, locks, &c.).



In central stack, on ground floor is a fireplace opening with square head & joints of chamfered stone. It has been partially blocked up.

Door from passage into room gold house has an old chamfered frame 17k.c.

Ceilings of ground floor rooms have exposed chamfered beams with moulded stops.

Then are three crutches ('blades') the position of which are shown on plan at points marked 'x'

8. Condition: *Good*

9. Visited by (with dates): *A.T. Phillips . Sept. 1927.*

10. Bibliography:

11. No. of Ordnance Sheet (6-in.): *XLIV. N.W.*

12. Signature of Investigator. *A.T. Phillips*

The History of Ewyas Lacy

Document Record

(Disposition of rooms, if original, giving fittings as they occur (see list), beginning with the ground floor, following with the basement, and working up to the attics : staircases in the same manner.)



The History of Ewyas Lacy

Document Record

B.

RECORD CARD FOR SECULAR MONUMENTS.

(N.B.—Detail of special interest is to be entered here, but described fully on a separate card.)

1. Name and situation of Monument (with owner's Name and Address). *Middle Trewern
1 3/4 miles N.N.E of Longtown Church.*

2. General appearance: (a) No. of storeys. *1 rather*
(b) Building materials. *Stone rubble.*
(c) Roofs. *Stone slates same mod.*

3. Historical development (with dates and small sketch plan).
The wing was built c. 1600 & the fittings of the main house S of central stack are also of this date but it is probable that this portion of the house was earlier date. N of the central stack house was apparently extended

4. Special features (if any). *or, else re-modelled, later in the 17th c.
In modern times minor alterations have been effected.*

5. Elevations: (Beginning with the main front, and mentioning, in the following order:—(a) Walls; (b) Gables; (c) Doors; (d) Windows; (e) Chimneys; (f) Rainwater heads and pipes.)

East Elev. Stone rubble walls. Three dormer windows. This elevation has had modern doors & windows inserted.

North Elev. Gable. Stone rubble. Exposed timbers in gable. On ground floor is a blocked window & a 3 light diamond mullioned window. In gable is a 4 light diamond mullioned window.

South Elev. Gable. Rectangular stone chimney stack re-built. There is a blocked window. Wing has a blocked window & a single light with chamfered wood frame

North Elev of Wing On ground floor there is a 2 light window with chamfered wood frame mullion on 2nd floor a 2 light window with a square wood frame.

West Elev. There is a blocked window & two 3 light windows with wood frames square externally chamfered internally. Wing is gabled & has exposed timbers. On ground floor is a 2 light window with chamfered wood frame & mullion.

6. Grounds: (a) Gardens; (b) Outbuildings; (c) Statuary, sundials, etc.

There is a square stone central chimney stack with projecting strips & 3 course projecting stone cap.

County. *Herefordshire*
Parish. *Longtown*
Sub-Commission. *Severian*
No. of Monument. *45*

P.T.O.

(89,102). Wt. 33,540—47,500. 12/13. A.A.E.W.
(97,153). „ 5621—53,8000. 5/14. „

The History of Ewyas Lacy


Document Record

7. Interior: (Disposition of rooms, if original, giving fittings as they occur. (see list), beginning with the ground floor, following with the basement, and working up to the attic: staircases in the same manner.)

Fittings:
(Remember list)

- (1) Chimneys.
- (2) Cupboards (kitchen).
- (3) Doors and Overdoors.
- (4) Fireplaces and Mantel pieces.
- (5) Glass.
- (6) Paintings.
- (7) Paneling.
- (8) Parquetry and Floors.
- (9) Plasterwork on internal walls.
- (10) Stairs and basins (if tubs).
- (11) Screens.
- (12) Tapestries.
- (13) Miscellaneous (carving, ironwork, bolts, etc.).

Between the two most suitable rooms is a timber frame partition with stop chamfered head, with square wood panels between the posts. In this partition is a doorway with moulded panels moulding with round head. Beneath head which is square the panelling is cut shaped as in sketch. The two doors leading from here being on uniform with same & are hung on stop hinges which in case of great N door are of shape →



The ceiling of the wing has exposed moulded beams. Partition → with steps of same type as here shown in sketch of door post steps.

In this wing immediately against wall of stone is a timber partition with stop moulded string. The head rail is missing on outside & there have never been any balusters. The string abutting against the lower wall on E side requires a paneled partition on the W side.

On the latter side the string is hinged into a wood mould rectangular in shape with stop moulded angles moulding combed round top. This forms a paneled or which stands a post with stop chamfered angles (see continuation card)

8. Condition: Fair.

9. Visited by (with dates): J.T. Phillip, Sept. 1927



10. Bibliography:

11. No. of Ordnance Sheet (6-in.): XL11 N.E.

12. Signature of Investigator: J.T. Phillip

Staircase could. which has its top hinged into under side of beam. The paneled partition is of the same type as that previously described as between the two most suitable rooms.

The doorway leading to the modern half-garage has heavy stop chamfered panels roughly squared under head. The ceiling of these two modern rooms has exposed chamfered beams with moulded steps between the rooms is another paneled partition similar type to those already specified but which has probably been re-fitted in its present position.

County: Shropshire Parish: Longton Sub-Division: Sander No. of Monument:

(80,000) W. 25,000-42 1200 1013 S.E.W. 100,000 - 1,140-27, 1000 114.

The History of Ewyas Lacy

Document Record

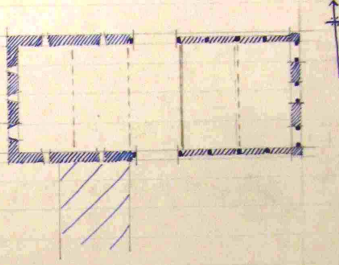
B.

RECORD CARD FOR SECULAR MONUMENTS
(N.B.—Detail of special interest is to be entered here, but described fully on a separate card.)

1. Name and situation of Monument (with owner's Name and Address). *Barn at Middle Tre-wen 20 yds. S of house.*

2. General appearance: (a) No. of storeys.
(b) Building materials. *Rubble stone & timber frame on stone plinth.*
(c) Roofs.

3. Historical development (with dates and small sketch plan).
a 17th c. barn.



4. Special features (if any).

5. Elevations: (Beginning with the main front, and mentioning, in the following order:—(a) Walls; (b) Gables; (c) Doors; (d) Windows; (e) Chimneys; (f) Rainwater heads and pipes.)

N. Elev. 2 West bays stone rubble with 2 slit windows. In center is high double door with head above eaves level roofed with lean-to' dormer roof. Two E bays timber frame on stone plinth with framing covered by modern boards.

S. Elev. Uniform with N elevation except that door head is below eaves' level.

E. Elev. Gabled. Upper half timber framed covered with modern weather boarding. lower half stone rubble with 3 doorways the two most northerly of which have old chamfered frames.

W. Elev. Stone rubble. Gabled. In gable is small Δ shaped window on ground floor level and 3 slits.

6. Grounds: (a) Gardens; (b) Outbuildings; (c) Statuary, sundials, etc.

County. *Herefordshire*
Parish. *Longtown*
Sub-Commission. *Secular.*
No. of Monument.

P.T.O.

(89,102). Wt. 32,340—47. 500. 12/13. A.&E.W.
1900. 2/14.

The History of Ewyas Lacy

Document Record



The History of Ewyas Lacy

Document Record

B.

RECORD CARD FOR SECULAR MONUMENTS.

(N.B.—Detail of special interest is to be entered here, but described fully on a separate card.)

1. **Name and situation of Monument** (with owner's Name and Address). *Upper Tre-wen
 nearly 2 miles N.N.E of Longtown.*

2. **General appearance:** (a) No. of storeys.
 (b) Building materials.
 (c) Roofs.

3. **Historical development** (with dates and small sketch plan).

*Only a few stones of wall of house remain.
 S of house is a timber frame barn with rubble
 stone lower story. The barn is almost deserted
 but there is an old chamfered door frame
 with date 1684 cut in the head.*

4. **Special features** (if any).
(further investigation prevented by a hill)

5. **Elevations:** (Beginning with the main front, and mentioning, in the following order:—(a) Walls;
 (b) Gables; (c) Doors; (d) Windows; (e) Chimneys; (f) Rainwater heads and pipes.)


6. **Grounds:** (a) Gardens; (b) Outbuildings; (c) Statuary, sundials, etc.

County. *Merseyshire*

Parish. *Longtown*

Sub-Commission. *Sewer*

No. of Monument. *146*



P.T.O.

(89,102). Wt. 33,249—47. 500. 12/13. A.&E.W.
 (97,153). „ 5621—53. 6000. 3/14. „

The History of Ewyas Lacy

Document Record

B.

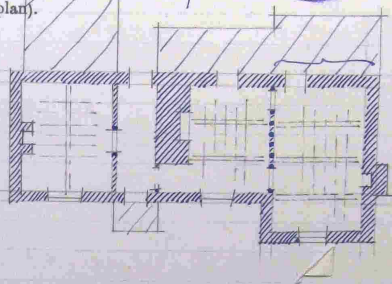
RECORD CARD FOR SECULAR MONUMENTS.

(N.B.—Detail of special interest is to be entered here, but described fully on a separate card.)

1. Name and situation of Monument (with owner's Name and Address). *Iron-worm
1 1/8 miles N. of Longtown Church.*

2. General appearance: (a) No. of storeys. *1 rather.*
(b) Building materials. *Stone rubble.*
(c) Roofs. *Modern slates.*
(admission unobtainable - owner absent) ↗

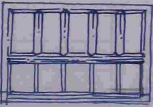
3. Historical development (with dates and small sketch plan).
Probably an early 17th c. house. In modern times additions have been built on against the N side or porch built on S. side



4. Special features (if any).

5. Elevations: (Beginning with the main front, and mentioning, in the following order:—(a) Walls; (b) Gables; (c) Doors; (d) Windows; (e) Chimneys; (f) Rainwater heads and pipes.)

South Elev. Doornay has wood chamfered head + jambs the head having been re-set. Modern porch has an old cambered lintel over the entrance. Wing is gabled. West of porch is a wood framed window of 5 lights with chamfered frame mullions + moulded transome rail. The mullions below transome are modern. This window is of rather unusual proportions. On 1st floor is a window with old timber frame.



West Elev. Stone gable. Mod. square brick stack.
North Elev. Gabled at End. Whole wall concealed except for doornay which has a chamfered wood frame.
East Elev. Stone. Modern outside chimney stack.

6. Grounds: (a) Gardens; (b) Outbuildings; (c) Statuary, sundials, etc.

County. *Shropshire*
Parish. *Longtown*
Sub-Commission. *Sander*
No. of Monument. *42*

(80,102). Wt. 33,349—47. 500. 12/13. A.&E.W.
(97,153). „ 5621—53. 6000. 5/14. „

P.T.O.

The History of Ewyas Lacy

Document Record

7. Interior: (Disposition of rooms, if original, giving fittings as they occur (see list), beginning with the ground floor, following with the basement, and working up to the attics: staircases in the same manner.)

Fittings:

(Reminder list).

- (1) Ceilings.
- (2) Cupboards (fixed).
- (3) Doors and Overdoors.
- (4) Fireplaces and Mantel-pieces.
- (5) Glass.
- (6) Paintings.
- (7) Panelling.
- (8) Parquetry and floors
- (9) Plasterwork on internal walls.
- (10) Roofs and beams (internal).
- (11) Screens.
- (12) Tapestries.
- (13) Miscellaneas (e.g., carving, ironwork, locks, &c.).



Ceilings of all ground floor rooms have exposed stop chamfered beams & also exposed joists.

Between central & east E room is a panelled partition.

In partition between hall & west W room is doorway with arched headed frame.

8. Condition: *Poor.*

9. Visited by (with dates): *J.T. Phillips Sept. 1927.*

10. Bibliography:

11. No. of Ordnance Sheet (6-in.): *XLIII. N.E.*

12. Signature of Investigator. *J.T. Phillips*

The History of Ewyas Lacy

Document Record

staircases in the same manner.)



The History of Ewyas Lacy

Document Record

B.

RECORD CARD FOR SECULAR MONUMENTS.

(N.B.—Detail of special interest is to be entered here, but described fully on a separate card.)

1. **Name and situation of Monument** (with owner's Name and Address). *Tanhouse Farm
1/2 mile N of Clodock Church.*

2. **General appearance:** (a) No. of storeys. *2.*
(b) Building materials. *Rubble stone + some timber framing.*
(c) Roofs. *Modern slates*

3. **Historical development** (with dates and small sketch plan).
*House built probably late
in 16th, ^{or early 17th} late in 17th. the
E elevation which had a timber
frame upper story - was cased
with stone - possibly the remainder
of house being treated in the same
way, & the portion which is now a barn
was lengthened. In modern times*

4. **Special features** (if any) *additions have been built up on N + S + E
sides & a small lean-to built into angle on S side of
porch.*

5. **Elevations:** (Beginning with the main front, and mentioning, in the following order:—(a) Walls;
(b) Gables; (c) Doors; (d) Windows; (e) Chimneys; (f) Rainwater heads and pipes.)


*West Elev. Rubble stone. On ground floor of house is a 2 light
window with old wood frame + 3 light ditto on
1st floor. Projecting 2 storied gabled porch with
seats inside + 2 slit windows, one on each end
side wall. Barn has large door way + 2 rows
of slit windows.*

S. Elev. Gabled. largely concealed by mod. addition.

N. Elev. Gabled

*East Elev. largely concealed. 1st floor of house has exposed
timber framing. On ground floor of barn are
2 blocked windows + slit windows above.*

6. **Grounds:**



P.T.O.

County. *Herefordshire*

Parish. *Long Craven*

Sub-Commission. *Seventon*

No. of Monument. *15*

(80,102). Wt. 32,349—47. 500. 12/13. A.&E.W.
(97,193). „ 5021—53. 6000. 5/14. „

The History of Ewyas Lacy

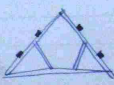
Document Record

7. **Interior :** (Disposition of rooms, if original, giving fittings as they occur (see list), beginning with the ground floor, following with the basement, and working up to the attics : staircases in the same manner.)

Fittings :

(Reminder list).

- (1) Ceilings
- (2) Cupboards (fixed).
- (3) Doors and Overdoors.
- (4) Fireplaces and Mantel-pieces.
- (5) Glass.
- (6) Paintings.
- (7) Panelling.
- (8) Parquetry and floors.
- (9) Plasterwork on internal walls.
- (10) Roofs and beams (internal).
- (11) Screens.
- (12) Tapestries.
- (13) Miscellaneous (e.g., carving, ironwork, locks, &c.).

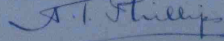
Barn has 3 timber trusses of iron 
 Ceiling of main N room has exposed chamfered beam with spur steps.
 Ceiling of porch has exposed step chamfered joints.
 Stone steps to staircase have treads formed of 1" oak slabs.

8. **Condition :** Good.

9. **Visited by (with dates):** A.T. Phillip April 1927.

10. **Bibliography :**

11. **No. of Ordinance Sheet (6-in.):** XLIII. S.E.

12. **Signature of Investigator.** 

The History of Ewyas Lacy

Document Record



The History of Ewyas Lacy

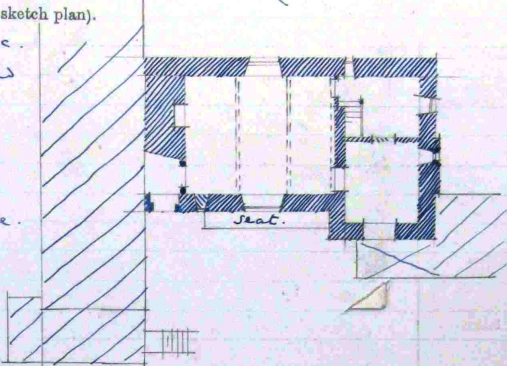
Document Record

B. RECORD CARD FOR SECULAR MONUMENTS.
(N.B.—Detail of special interest is to be entered here, but described fully on a separate card.)

1. Name and situation of Monument (with owner's Name and Address). *Llanwonnoy Farm*
1/2 mile N.N.E of Llangynon Church.

2. General appearance: (a) No. of storeys. *1 rather*
(b) Building materials. *Stone rubble.*
(c) Roofs. *Stone slates.*
(admission refused to 1st. floor)

3. Historical development (with dates and small sketch plan).
Probably portion of a ^{late} 14th c. house. It was re-modelled in 17th c. in modern times a new building has been erected at its N.W end probably a site of portion original house.



4. Special features (if any)

5. Elevations: (Beginning with the main front, and mentioning, in the following order:—(a) Walls; (b) Gables; (c) Doors; (d) Windows; (e) Chimneys; (f) Rainwater heads and pipes.)

W. Elev. Rubble stone. Doorway has pointed arched chamfered head jambs of stone & immediately S of same is a single light blocked window with chamfered stone square head jambs & sill. Along front is a stone seat terminated at its end by projecting gabled wing of 2 stories.


N. Elev. Concealed by mod. house.

S. Elev. Stone rubble. On ground floor there are two windows, the more easterly of which has an old wood pane. The other has square head, jambs & sill of stone rather deeply splayed and is a single light window. At E end of this elevation—which is of 2 stories—the roof is carried down to 1 story.

E. Elev. Stone rubble partly re-built. There are two windows of which the more westerly has an old step chamfered timber lintel while other has re-set chamfered stone jambs.

6. Grounds: (a) Gardens; (b) Outbuildings; (c) Statuary, sundials, etc.

County. *Shropshire*
Parish. *Longton*
Sub-Commission. *Sever*
No. of Monument. *140*



P.T.O.

(89,102). Wt.33,340—47. 500. 12/13. A.&E.W.
(97,153). „ 5621—53. 6000. 5/14. „

The History of Ewyas Lacy

Document Record

7. **Interior:** (Disposition of rooms, if original, giving fittings as they occur (see list), beginning with the ground floor, following with the basement, and working up to the attics; staircases in the same manner.)

Fittings:

(Reminder list).

- (1) Ceilings
- (2) Cupboards (fixed).
- (3) Doors and Overdoors.
- (4) Fireplaces and Mantel-pieces.
- (5) Glass.
- (6) Paintings.
- (7) Panelling.
- (8) Parquetry and floors.
- (9) Plasterwork on internal walls.
- (10) Roofs and beams (internal).
- (11) Screens.
- (12) Tapestries.
- (13) Miscellaneas (e.g., carving, ironwork, locks, &c.).



Ceiling of ground floor large room has exposed stop chamfered beams & exposed joists.

Framing to doorway between entrance vestibule room has a chamfered ogee head.

Door to main southward room is a 17th c. battened door.

8. **Condition:** Poor.

9. **Visited by** (with dates): A.T. Phillips Sept. 1927.

10. **Bibliography:**

11. **No. of Ordnance Sheet** (6-in.): XLIII. N.E.

12. **Signature of Investigator.** A.T. Phillips

The History of Ewyas Lacy

Document Record



Observations:

Index page is at http://www.ewyaslacy.org.uk/doc.php?d=rs_ewy_0342