



The History of Ewyas Lacy

Document Record

Held at: National Archives

Reference: AE/1-4

Source: Original Survey Particulars

Title: Digital Archive: Royal Commission on Ancient and Historical Monuments - Photographs of original survey particulars, Part 2 of 13

Place name: Craswall, Llanveynoe, Longtown, Michaelchurch Escley

Date: 1920s

Description:

Part 2: Craswall and Michaelchurch Escley

This Digital Archive collection contains photographs of surviving parts of the initial surveys of Craswall, Michaelchurch Escley, Llanveynoe and Longtown carried out in the 1920's by the Royal Commission on Ancient and Historical Monuments. They comprise photographs, hand written survey notes and the annotated maps the surveyors used, which are held in the National Archives and formed the basis for the eventual RCAHM Reports on the buildings and structures in the parishes.

The photographs have been made available by Chris Hodges, to whom we are most grateful.

ELSG Ref	RCAHM Record
32	Gilbert's Place 1
33	Gilbert's Place 2
34	Gilbert's Place photo
35	White Oak Farm 1
36	White Oak Farm 2
37	White Oak Farm photo1
38	White Oak Farm photo2
39	Rockyfold Farm 1
40	Rockyfold Farm 2
41	Rockyfold Farm photo1
42	Rockyfold Farm photo2
43	Old Mill Farm 1
44	Old Mill Farm 2



The History of Ewyas Lacy

Document Record

- 45 Old Mill Farm photo1
- 46 Old Mill Farm photo2
- 47 Old Mill Farm photo3
- 48 Old Mill Farm photo4
- 49 Trelan Farm 1
- 50 Trelan Farm 2
- 51 Trelan Farm photo1
- 52 Trelan Farm photo2
- 53 Trelan Farm photo3
- 54 Trelan Farm photo4
- 55 Ruinsford [Rhynsford] farm 1
- 56 Ruinsford [Rhynsford] farm 2
- 57 Ruinsford [Rhynsford] farm photo1
- 58 Ruinsford [Rhynsford] farm photo2
- 59 Ruinsford [Rhynsford] farm photo3
- 60 Ruinsford [Rhynsford] farm photo4

The History of Ewyas Lacy

Document Record

B.

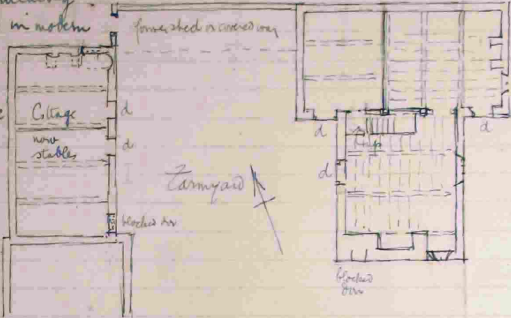
RECORD CARD FOR SECULAR MONUMENTS.

(N.B.—Detail of special interest is to be entered here, but described fully on a separate card.)

1. **Name and situation of Monument** (with owner's Name and Address). *Gilbert's Place - farmhouse
1 mile WNW of church*

2. **General appearance:** (a) No. of storeys. *Two, upper partly in roof*
(b) Building materials. *Stone walls*
(c) Roofs. *Stone slabs*

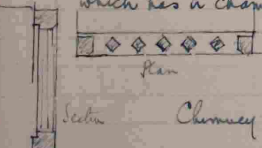
3. **Historical development** (with dates and small sketch plan).
The farmhouse is an early 17th century building of T shaped plan. It has been altered in modern times & some of its old oak removed. A rectangular building W of the house now stables was originally a dwelling house of the 16th century.



4. **Special features** (if any)

5. **Elevations:** (Beginning with the main front, and mentioning, in the following order:—(a) Walls; (b) Gables; (c) Doors; (d) Windows; (e) Chimneys; (f) Rainwater heads and pipes.)
Farmhouse. Walls of stone. Ends of both wings gabled. All windows & doorways modern. A blocked doorway in the S wall of the W wing, w of the fireplace. Stone chimney stacks over the fireplaces in the end wall of each wing. The upper story lighted by flat-topped dormer windows.

Smaller house W of farmyard. Stone walls & gabled roof. windows and doorways modern, except a window in the N. gabled wall. End of former fireplace which has a chamfered frame - masons joints - the mow of the head and sill rebated in a shutter - and five mullions square, set diagonally.



6. **Grounds:** (a) Gardens; (b) Outbuildings; (c) Statuary, sundials, etc.
Against a boundary wall S of the house and looking S towards the Black Mountain is an alcove or, as called by the present tenant, a sun-house? It is built of the local shaly rubble & the seat is now rather dilapidated. There is little detail whereby it can be dated but two yew trees, which now rather obstruct the view, are probably some 200 years old or more and therefore it seems probable the alcove was built before they were planted; otherwise to obtain the view its position might have been further west.

County. *Shropshire* Parish. *Creswell* Sub-Commission. *Secular* No. of Monument. *5.*

(80,102). Wt. 33,349—47. 600. 12/13. A.&E.W.
(97,153). " 5821—53. 6000. 5/14. "

P.T.O.

The History of Ewyas Lacy

Document Record

B.

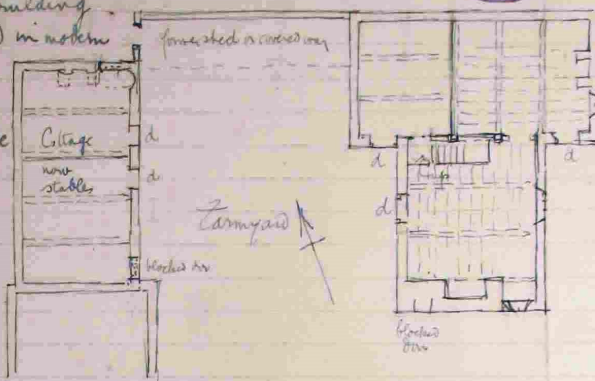
RECORD CARD FOR SECULAR MONUMENTS.

(N.B.—Detail of special interest is to be entered here, but described fully on a separate card.)

- Name and situation of Monument** (with owner's Name and Address). *Gilberts Place - farmhouse
1 mile WNW of church*
- General appearance:** (a) No. of storeys. *Two, upper partly in roof*
(b) Building materials. *Stone walls*
(c) Roofs. *Stone slabs*

- Historical development** (with dates and small sketch plan).

The farmhouse is an early 17th century building of T shaped plan. It has been altered in modern times & some of its old oak removed. A rectangular building W of the house now stables was originally a dwelling house of the 16th century.



- Special features** (if any)

- Elevations:** (Beginning with the main front, and mentioning, in the following order:—(a) Walls; (b) Gables; (c) Doors; (d) Windows; (e) Chimneys; (f) Rainwater heads and pipes.)

Farmhouse. Walls of stone. Ends of both wings gabled. All windows & door frames modern. A blocked doorway in the S wall of the S wing. W of the fireplace. Stone chimney stacks over the fireplaces in the end wall of each wing. The upper story lighted by flat-topped dormer windows.

Smaller house W of farmyard. Stone walls & gabled roof. windows and doorways modern, except a window in the N. gabled wall E of the former fireplace which has a chamfered frame - masons joints - the mason of the head and sill rebated in a shutter - and five mullions square, set diagonally.



Chimney stack now removed

- Grounds:** (a) Gardens; (b) Outbuildings; (c) Statuary, sundials, etc.



Against a boundary wall S of the house and looking S. towards the Black Mountain is an alcove or, as called by the present tenant, a 'sun-house'. It is built of the local shaly rubble & the seat is now rather dilapidated. There is little detail whereby it can be dated but two yew-trees, which now rather obstruct the view, are probably some 200 years old or more and therefore it seems probable the alcove was built before they were planted; otherwise to obtain the view its position might have been further west.

County. *Shropshire*

Parish. *Cruswell*

Sub-Commission. *Leiden*

No. of Monument. *5.*

The History of Ewyas Lacy

Document Record

7. Interior: (Disposition of rooms, if original, giving fittings as they occur (see list), beginning with the ground floor, following with the basement, and working up to the attics; staircases in the same manner.)

Fittings:

(Reminder list)

(1) Ceilings

(2) Cupboards (fixed).

(3) Doors and Overdoors.

(4) Fireplaces and Mantel-pieces.

(5) Glass.

(6) Paintings.

(7) Panelling.

(8) Parquetry and floors.

(9) Plasterwork on internal walls.

(10) Roofs and beams (internal).

(11) Screens.

(12) Tapestries.

(13) Miscellaneous (e.g., carving, ironwork, locks, &c.).

The living and the E. half of the N wing, have stop-chamfered ceiling beams and open timbered ceilings with stop-chamfered joists except a patch of modern repair in the SE corner of the N wing. The W half of the N wing has modern beams and joists and is partitioned off from the E half. There was one of the usual local screens of wide studs and narrow panels between the two wings, but only the top beam with the mortices remains in situ the studs having been removed & the beam supported by two reused oak beams as posts. The staircase against this partition is modern in construction & position. The living has a wide fireplace with modern grate in its S wall and the original staircase was probably next E of it (now removed). The upper rooms have been waled boarded and the roof trusses consisting of two principals & a collar beam have had the collar beams removed for head-room.

The stables formerly a smaller house of rectangular plan W. of the farmyard has heavy ceiling beams - chamfered, with broad stops. The ceiling joists removed. In the N. most room the N. wall had a large fireplace but most of it has been taken away. E of it was a winding stone staircase with rounded drums in the walling but now removed. It was lighted by the six light oak window described under elevations. W. of the fireplace was probably an oven

8. Condition: *fairly good*

9. Visited by (with dates): *JW Bloe May 17 1929*

10. Bibliography:

11. No. of Ordnance Sheet (6-in.): *XXXVII NW*

12. Signature of Investigator: *JW Bloe*

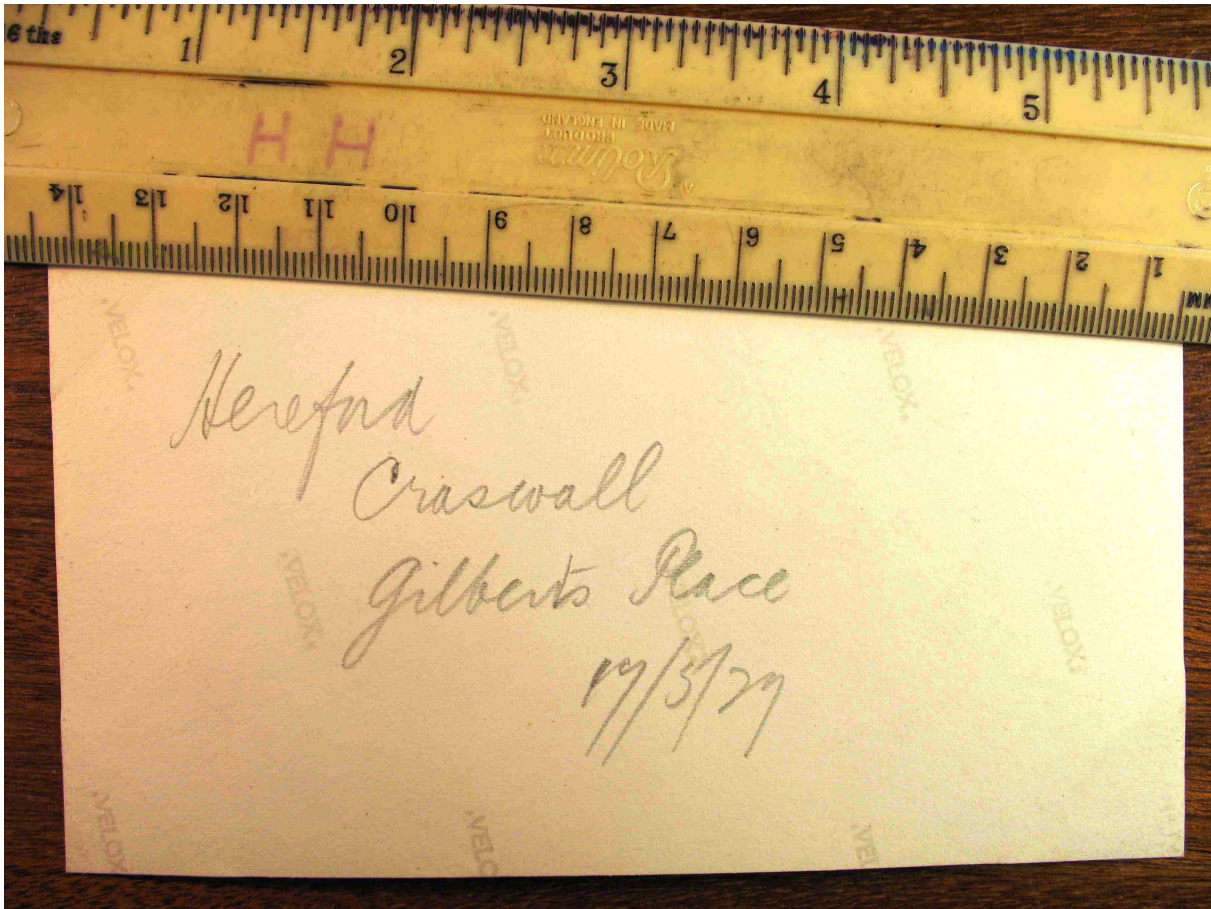
The History of Ewyas Lacy

Document Record



The History of Ewyas Lacy

Document Record



The History of Ewyas Lacy

Document Record

B.

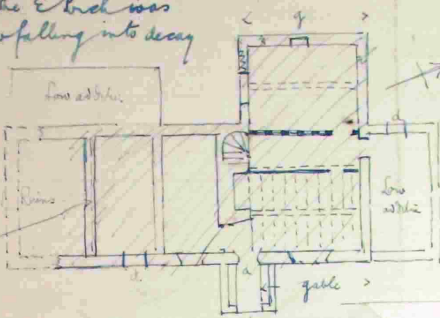
RECORD CARD FOR SECULAR MONUMENTS.

(N.B.—Detail of special interest is to be entered here, but described fully on a separate card.)

1. **Name and situation of Monument** (with owner's Name and Address). *White Oak Farm 3/4 mile NNW of church*

2. **General appearance:** (a) No. of storeys. *two*
(b) Building materials. *Local stone slaty rubble*
(c) Roofs. *stone slates*

3. **Historical development** (with dates and small sketch plan).
*Probably a 16th. house of L-shaped plan; the E. block was probably a later addition. House now falling into decay half of it in ruins.
Name 'White Oak' derived from an old tree standing E. of the house*



4. **Special features** (if any):

5. **Elevations:** (Begin with the main front, and mentioning, in the following order:—(a) Walls; (b) Gables; (c) Doors; (d) Windows; (e) Chimneys; (f) Rainwater heads and pipes.)
*E. front. Central porch with little to date: now roofless. Internal doorway oak framed. windows have modern frames: S. half of wall in ruins.
Central chimney; square stone stack.
S. end ruin: timbered roof over gable end on former internal truss.
W. wing has an old chimney stack to gabled W. wall and in the S. wall an old oak frame to a blocked window. This wing has bad gaps in the S. wall and splits in the N. & W. walls.*

6. **Grounds:** (a) Gardens; (b) Outbuildings; (c) Statuary, sundials, etc.
*A barn S.E. of house a built of stone with gabled E. & W. ends: now partly divided into store chambers. In the E. wall are three doorways with old oak frames: the middle doorway has an old door divided into three vertical panels by rounded pillets: the other two have rougher battered door.
Inside are old chamfered beams
One half of side of the roof covered with stone slates the other side with corrugated iron*

P.T.O.

(44,773). Wt.13,734—20. 2000. 8/11. A.&E.W.

County. *Wessex*
Parish. *Overton*
Sub-Commission. *Wessex*
No. of Monument. *5*

The History of Ewyas Lacy

Document Record

7. **Interior:** (Disposition of rooms, if original, giving fittings as they occur (see list), beginning with the ground floor, following with the basement, and working up to the attics; staircases in the same manner.)

Fittings:

(Reminder list)

(1) Ceilings.

(2) Cupboards (fixed).

(3) Doors and Overdoors.

(4) Fireplaces and Mantel-pieces.

(5) Glass.

(6) Paintings.

(7) Panelling.

(8) Part
anc

(9) Plas
on
wal

(10) Ro
bed
ter

(11) Screen

(12) Tapestries.

(13) Miscel-
lanea (e.g.,
carving,
ironwork,
locks, &c.).

Wings run S & W. the former being the main block

The only habitable room in the N end of the main block has two heavy stop chamfered ceiling beams and an open timbered ceiling with chamfered rafters. In the S wall a wide fireplace (in central stack) reduced for modern grate and W of it a modern wood staircase. The partition dividing this room from the room in the W wing (dairy) is one of the local type with chamfered studs and narrow oak panels. The doorway in the N. end of the screen has stop chamfered posts and an ogee-shaped lintel and contains an old oak battered door.

Wing has stop chamfered beams.
Run up with two pulleys each side



A fine long strip of early 17th c. fluted fringe in oak now loose is probably indigenous but its original position not known.



8. **Condition:** Only part inhabited: the S end in ruins, cracks & gaps on the NW wing & the E porch roofless.

9. **Visited by** (with dates): J.W. Blue May 21, 1937

10. **Bibliography:**

11. **No. of Ordnance Sheet** (6-in.): XX XVII NW.

12. **Signature of Investigator.** J.W. Blue.

The History of Ewyas Lacy

Document Record



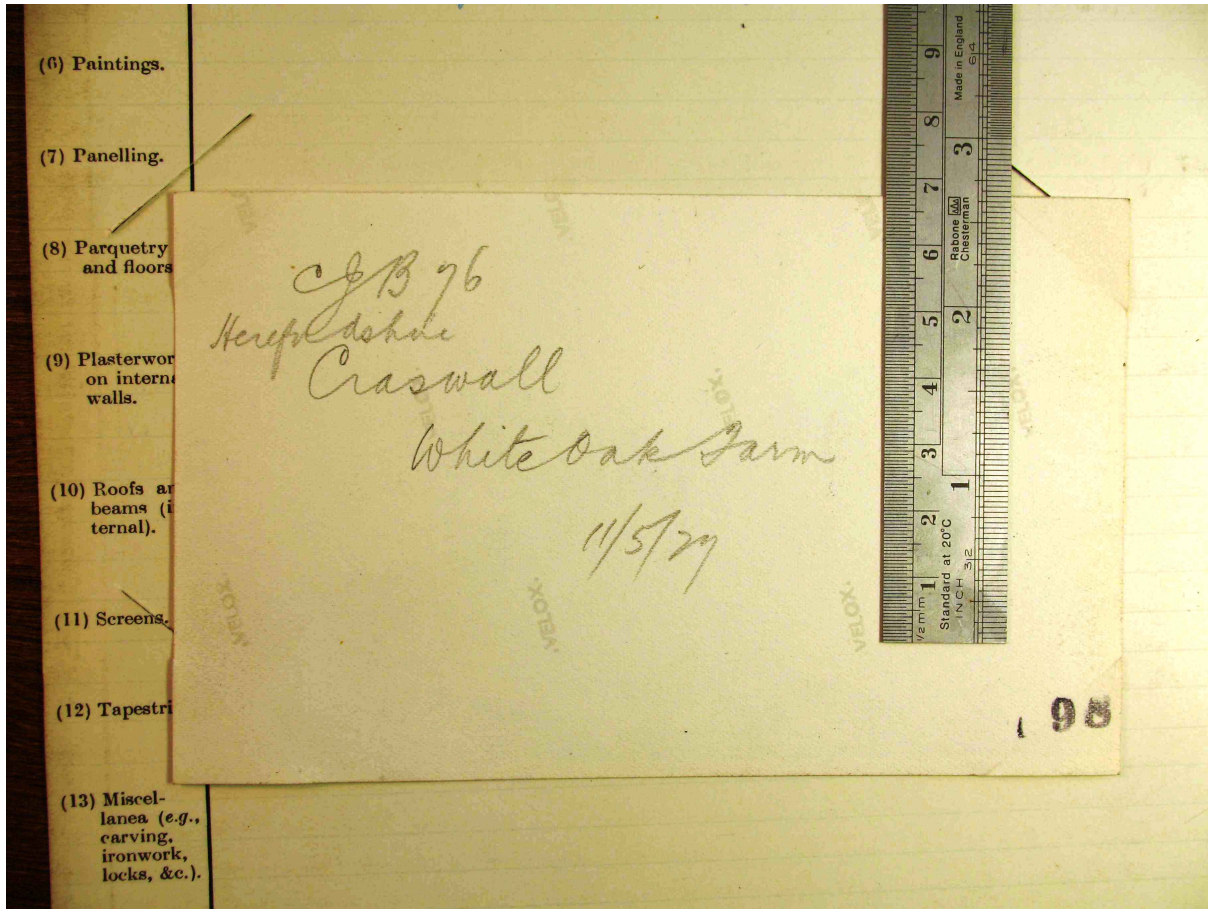
The History of Ewyas Lacy

Document Record



The History of Ewyas Lacy

Document Record



The History of Ewyas Lacy

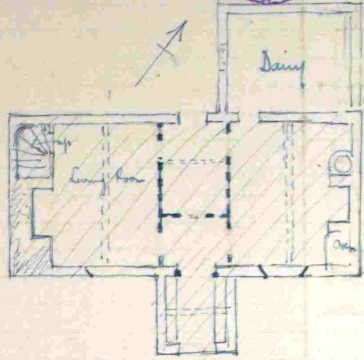
Document Record

B. RECORD CARD FOR SECULAR MONUMENTS.
N.B.—Detail of special interest is to be entered here, but described fully on a separate card.)

1. **Name and situation of Monument** (with owner's Name and Address). *Lochyfeld Farm, 1/2 mile N.E. of Parish Church*

2. **General appearance:** (a) No. of storeys. *Two*
 (b) Building materials. *Walls of local stone rubble*
 (c) Roofs. *stone slabs*

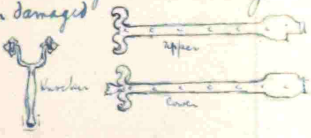
3. **Historical development** (with dates and small sketch plan).
A 16th-century house of rectangular plan with a central porch-wing on the S.E. front



4. **Special features** (if any):

5. **Elevations:** (Beginning with the main front, and mentioning, in the following order:—(a) Walls; (b) Gables; (c) Doors; (d) Windows; (e) Chimneys; (f) Rainwater heads and pipes.)


Stone rubble walls with modern window frames in segmental arched openings. The plain square entrance to the porch has an oak lintel. The inner entrance doorway has heavy oak posts and a riep-champed lintel within which is a three-centred oak arch head: the door is of old oak battens on which are planed oak fillets one original ~~the~~ the other later the fillet formerly followed the contour of the arch but now missing; the door is hung with two strap hinges with foliated ends both rather damaged. The upper more than the lower. The iron knocker is also an interesting piece of door-furniture.



The chimneys are plain square stone stacks.

6. **Grounds:** (a) Gardens; (b) Outbuildings; (c) Statuary, sundials, etc.

A barn N.E. of the house, of stone, has the roof divided into three bays by trusses of large sized oak tie beams and principal rafters. The gable head of the N.E. end of the barn has not been covered with stone ^{or plaster} and shows the framing of what was presumably the original timber framed wall all timbers being of large scantlings. It is possible however that the barn has been shattered & that this is a former internal truss.



County. *Radford*
 Parish. *Creweville*
 Sub-Commission. *Leander*
 No. of Monument. *1*

(44,773). Wt. 13,734—20. 2000. 8/11. A.&E.W. P.T.O.

The History of Ewyas Lacy

Document Record

7. **Interior:** (Disposition of rooms, if original, giving fittings as they occur (see list), beginning with the ground floor, following with the basement, and working up to the attics; staircases in the same manner.)

Fittings:

(Reminder list.)

- (1) Ceilings.
- (2) Cupboards (fixed).
- (3) Doors and Overdoors.
- (4) Fireplaces and Mantel-pieces.
- (5) Glass.
- (6) Paintings.
- (7) Panelling.
- (8) Parquetry and floors.
- (9) Plasterwork on internal walls.
- (10) Roofs and beams (internal).
- (11) Screens.
- (12) Tapestries.
- (13) Miscellanea (e.g., carving, ironwork, locks, &c.).

The two partitions running from front to back entrances are of old wide oak studs chamfered on their outer faces (towards the rooms) and have narrow oak board panels of about the same width as the studs. A similar partition, now pierced by a doorway, closed the space across the passage to form a small square lobby within the front entrance and a larger room behind. The doorway in the partition between the entrance lobby and the S.W. (living) room is an original one with a triangular headed lintel and the doorway from the larger central room into the N.E. room (kitchen) has a similar head. The other two doorways in the old partitions have plain square heads - possibly later alterations.

The S.E. (living) room has a heavy stop-chamfered ceiling beam but the ceiling joists which do not fill the old mortices are later repairs. This room has a large fireplace reduced for a modern grate but with a very large flue. To the N. of it is a stair case (partly winders) with heavy oak treads. The door to this staircase of three old oak battens is hung with two strap-hinges with filiated ends. The window has splayed jambs and an old oak seat-board.

The N.E. room (kitchen) has a heavy oak chamfered ceiling beam but modern ceiling joists. The fireplace in the N.E. wall has an 18 inch oak lintel. The door in the N.W. wall opening into the dairy is old, of oak battens: formerly in two halves upper and lower the upper retaining one strap hinge with a filiated end. The porch also has a heavy chamfered cross beam, and on either side are benches with old oak seat-boards.

Upper rooms not open to inspection but the roof appears to have heavy oak purlins.

- 8. **Condition:** *Good*
- 9. **Visited by (with dates):** *Jw Blue May 10th 1927*
- 10. **Bibliography:**
- 11. **No. of Ordnance Sheet (6-in.):** *XXXVII SE.*
- 12. **Signature of Investigator.** *Jw Blue*

The History of Ewyas Lacy

Document Record



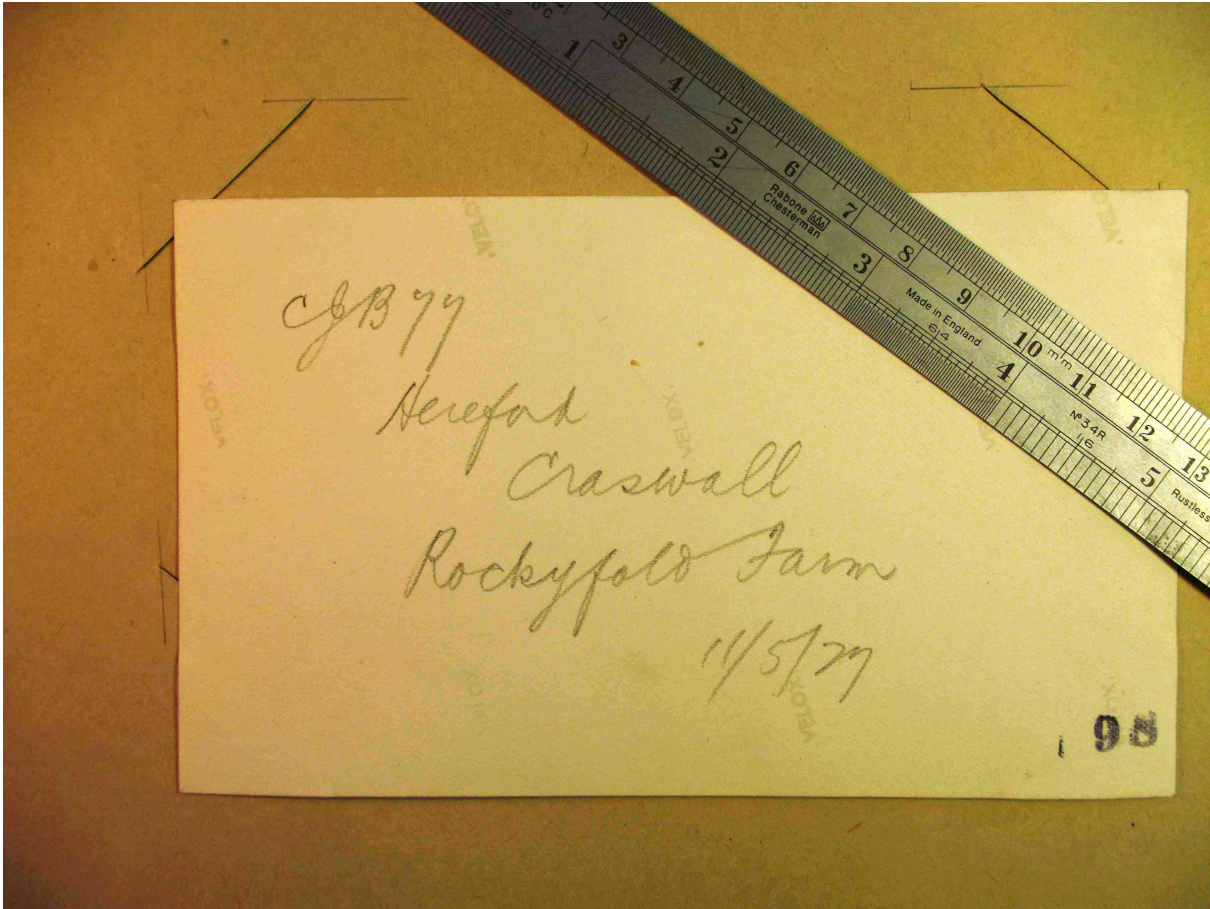
The History of Ewyas Lacy

Document Record



The History of Ewyas Lacy

Document Record



The History of Ewyas Lacy

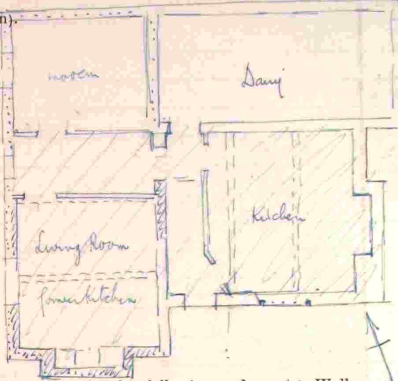
Document Record

B. RECORD CARD FOR SECULAR MONUMENTS.
(N.B.—Detail of special interest is to be entered here, but described fully on a separate card.)

1. **Name and situation of Monument** (with owner's Name and Address). *Old mill Farm 3/4 mile S. of church & E. of the Craswall - Longtown road.*

2. **General appearance:** (a) No. of storeys. *Two*
(b) Building materials. *stone walls. W part (main block) ~~is~~ modern brick top to chimney*
(c) Roofs. *W. part (main block) modern dates. E. wing stone slabs*


3. **Historical development** (with dates and small sketch plan).
Probably a 17th c. house of L shape originally. The original kitchen probably only one storey or one storey and attic. This wing (the W.) altered in modern times to a two-storey main block the former living room in the E wing being now the kitchen. The dairy, a low back addition probably 18th century.



4. **Special features** (if any):

5. **Elevations:** (Beginning with the main front, and mentioning, in the following order:—(a) Walls; (b) Gables; (c) Doors; (d) Windows; (e) Chimneys; (f) Rainwater heads and pipes.)
Walls all of shaly stone rubble found locally. Chimneys plain square stone stacks, that at S. end of main block having modern brick top
Wind over on E. wall of E. wing (kitchen) has an old oak frame and of four lights window above this of three lights also, ^{old} oak frame.

6. **Grounds:** (a) *Gar*



(44,773). Wt. 13,734—20. 2000. S/11. A.&E.W.

P.T.O.

County. *Wales*
Parish. *Craswall*
Sub-Commission. *Leckwith*
No. of Monument. *8*

The History of Ewyas Lacy

Document Record

7. **Interior:** (Disposition of rooms, if original, giving fittings as they occur (see list), beginning with the ground floor, following with the basement, and working up to the attics; staircases in the same manner.)

Fittings:	
(Reminder list)	
(1) Ceilings.	<p>Both old rooms had large fireplaces reduced to modern grates, and both rooms have two heavy oak chamfered ceiling beams.</p> <p>Two modern</p> <p>A doorway behind the stairs, opening into the dairy has a segmented arched oak lintel probably 18th century.</p>
(2) Cupboards (fixed).	
(3) Doors and Overdoors.	
(4) Fireplaces and Mantel-pieces.	
(5) Glass.	
(6) Paintings.	
(7) Panelling.	
(8) Parquetry and	
(9) Plaster on walls.	
(10) Roofs and beams (internal).	
(11) Screens.	
(12) Tapestries	
(13) Miscellaneous (e.g., carving, ironwork, locks, &c.).	

8. **Condition:** *Good*

9. **Visited by (with dates):** *Jw Blue May 10-1927*

10. **Bibliography:**

11. **No. of Ordnance Sheet (6-in.):** *XXXVII S.E.*

12. **Signature of Investigator:** *Jw Blue*

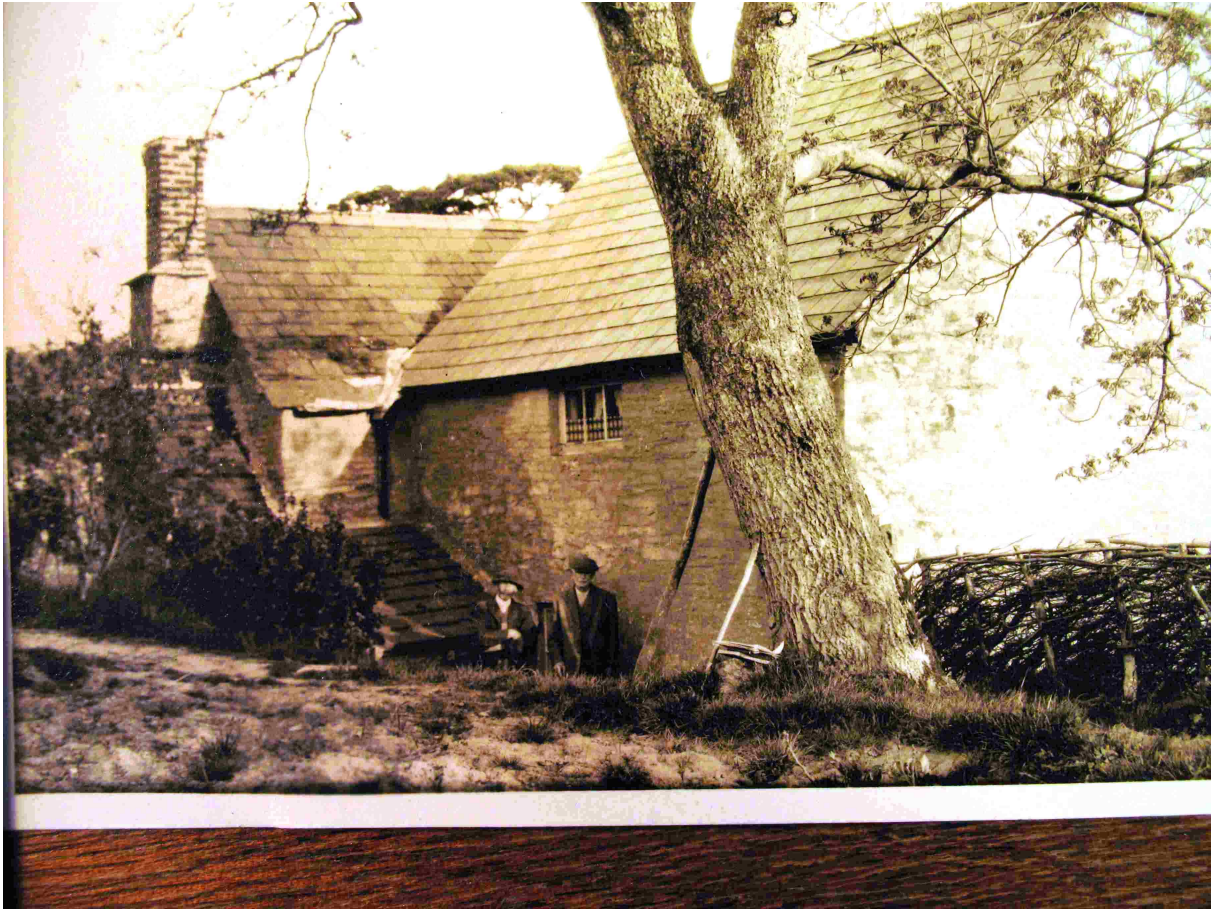
The History of Ewyas Lacy

Document Record



The History of Ewyas Lacy

Document Record



The History of Ewyas Lacy

Document Record



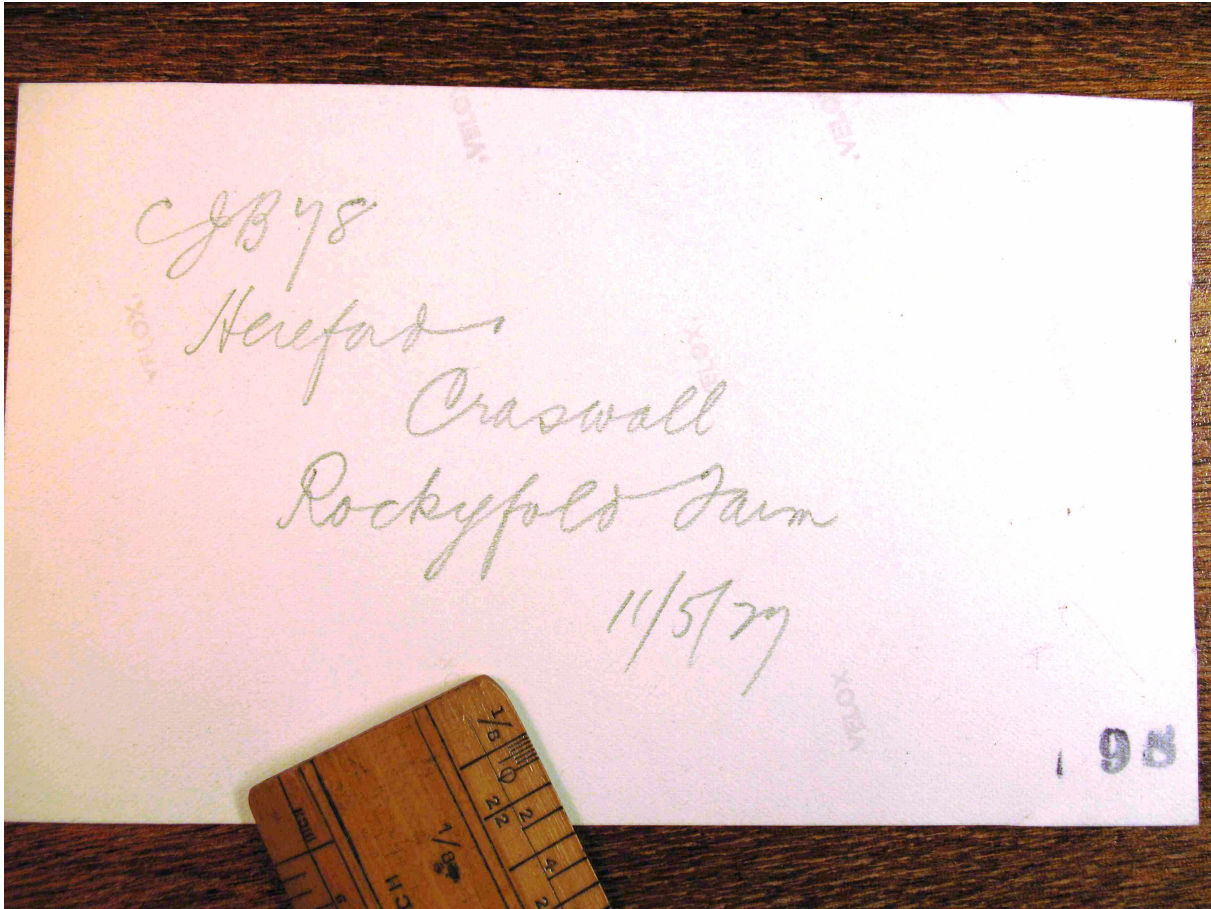
The History of Ewyas Lacy

Document Record



The History of Ewyas Lacy

Document Record



The History of Ewyas Lacy

Document Record

B.

RECORD CARD FOR SECULAR MONUMENTS.

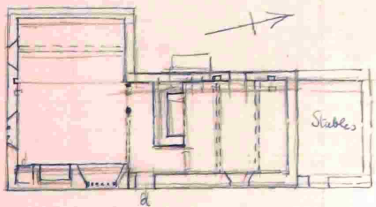
(N.B.—Detail of special interest is to be entered here, but described fully on a separate card.)

1. **Name and situation of Monument** (with owner's Name and Address). *Trelan Farm 1 mile E.S.E. of Ewyas*

2. **General appearance:** (a) No. of storeys. *Two - upper partly in roof*
 (b) Building materials. *Local stone shaly rubble*
 (c) Roofs. *destroyed had stone slabs*


3. **Historical development** (with dates and small sketch plan). *The house was an interesting one, probably of the 16th century - of L shaped plan but during the last generation it has been vacated and allowed to fall to ruin.*

4. **Special features** (if any):



5. **Elevations:** (Beginning with the main front, and mentioning, in the following order:—(a) Walls; (b) Gables; (c) Doors; (d) Windows; (e) Chimneys; (f) Rainwater heads and pipes.)
*E. front: stone: doorway stone jamb oak lintel: S of it a window opening with square oak frame and five oak mullions square set diagonally.
 S. wall nearly in ruins. W. wall has a projecting over modern doorway
 E. end stables continuing lines & height of the house: gable end.
 Central chimney stack to N. wing with plain square top.*

6. **Grounds:** (a) *Ca*



P.T.O.

(44,773). Wt. 13,734—20. 2000. 8/11. A.&E.W.

County. *Hereford*
 Parish. *Chewell*
 Sub-Commission. *Secular*
 No. of Monument. *9*

The History of Ewyas Lacy

Document Record

7. **Interior:** (Disposition of rooms, if original, giving fittings as they occur (see list), beginning with the ground floor, following with the basement, and working up to the attics; staircases in the same manner.)

Fittings:

(Reminder list.)

(1) Ceilings.

(2) Cupboards (fixed).

(3) Doors and Overdoors.

(4) Fireplaces and Mantel-pieces.

(5) Glass.

(6) Paintings.

(7) Panelling.

(8) Parquetry and floors.

(9) Plasterwork on internal walls.

(10) Roofs and beams (internal).

(11) Screens.

(12) Tapestries.

(13) Miscellaneous (e.g., carving, ironwork, locks, &c.).

Wings near N + W.

There was an oak partition of the usual local type at the S. end of the N. wing, dividing it from the W. wing but only two chamfered doorposts at the W. end; the screen remains in situ, and a stop chamfered top beam containing mortises for the former studs. This screen on the S. side and the heavy central chimney stack on the N. side formed a passage opposite the E. entrance.

The room in the N. wing - N. of the central chimney stack has a large open fireplace with a large chamfered bressumer with square stops. This room also has two heavy ceiling beams - chamfered, with broach-stops but the ceiling joists & upper flooring have disappeared. In the W. wall of the room is an oven, and in the wall thickness are two small square recesses.

The other wing (at the S. end running out to W.) retains only one chamfered ceiling beam near the W. end. The wing probably had two rooms each floor.

In the E. wall is a wide open fireplace with a 19 inch oak lintel or bressumer, - chamfered with square stops, - on stone piers. Next S. of it was probably the staircase.

The roof over the S.W. wing has disappeared; that over the N. wing retains a truss formed of a tie beam (middle part cut away) collar-beam and two heavy plain principals: two purlins on each side the rafters to have gone.

8. **Condition:** In ruins: piles of stones & broken timbers lie about the site

9. **Visited by (with dates):** J.W. Bloe May 11 1927

10. **Bibliography:**

11. **No. of Ordnance Sheet (6-in.):** XXXVII SE.

12. **Signature of Investigator:** J.W. Bloe

95

The History of Ewyas Lacy

Document Record



The History of Ewyas Lacy

Document Record



The History of Ewyas Lacy

Document Record



The History of Ewyas Lacy

Document Record



The History of Ewyas Lacy

Document Record

B.

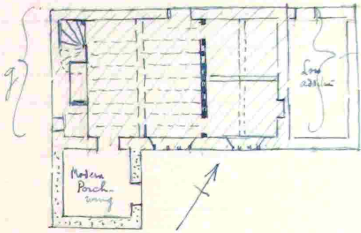
RECORD CARD FOR SECULAR MONUMENTS.

(N.B.—Detail of special interest is to be entered here, but described fully on a separate card.)

1. **Name and situation of Monument** (with owner's Name and Address). *Ruins ford (or Rhysford)*


2. **General appearance:** (a) No. of storeys. *Two*
 (b) Building materials. *Local stone rubble walls*
 (c) Roofs. *Stone slabs*

3. **Historical development** (with dates and small sketch plan). *The old timberwork inside suggests a 16th century origin to a rectangular plan with two rooms on each floor. The external stone walls with their wood windows and door frames are modern. It is possible the house was originally a wholly timber framed one excepting the E. stone chimney stack. The S. Porch is modern.*



4. **Special features** (if any):

5. **Elevations:** (Beginning with the main front, and mentioning, in the following order:—(a) Walls; (b) Gables; (c) Doors; (d) Windows; (e) Chimneys; (f) Rainwater heads and pipes.)
*Walls of sialy stone rubble (local) and all doors & window frames modern
 Chimneys of modern brick*



6. **Grounds:** (a) Gardens; (b) Outbuildings; (c) Statuary, sundials, etc.

County. *Shropshire*

Parish. *Chaswell*

Sub-Commission. *Local*

No. of Monument. *10*

P.T.O.

(44,773). Wt. 13,734—20. 2000. 8/11. A.&E.W.

The History of Ewyas Lacy

Document Record

7. **Interior:** (Disposition of rooms, if original, giving fittings as they occur (see list), beginning with the ground floor, following with the basement, and working up to the attics; staircases in the same manner.)

Fittings:	
(Reminder list).	
(1) Ceilings.	The partitions dividing the rectangular space into two rooms on each floor is of oak with wide stop-chamfered studs & door posts (about feet on both sides) and narrow oak board filling.
(2) Cupboards (fixed).	The western room ground floor has a heavy ceiling beam (showed), with brack-stops, and an open timbered ceiling with stop-chamfered joists. This room has a wide fireplace in the end (E.) wall, of which is a winding stem of stone with thick oak heads.
(3) Doors and Overdoors.	The Eastern room (now divided into two) has a stop-chamfered heavy ceiling beam and plastered ceiling: fireplace modern.
(4) Fireplaces and Mantel-pieces.	The top is a plain one with three panels on each side.
(5) Glass.	
(6) Paintings.	
(7) Panelling.	
(8) Parquetry and floors.	
(9) Plaster.	
(10) Roofs and beams (internal).	
(11) Screens.	
(12) Tapestries.	
(13) Miscellaneous (e.g., carving, ironwork, locks, &c.).	

8. **Condition:** *Good*

9. **Visited by (with dates):** *J.W. Blox May 11/27*

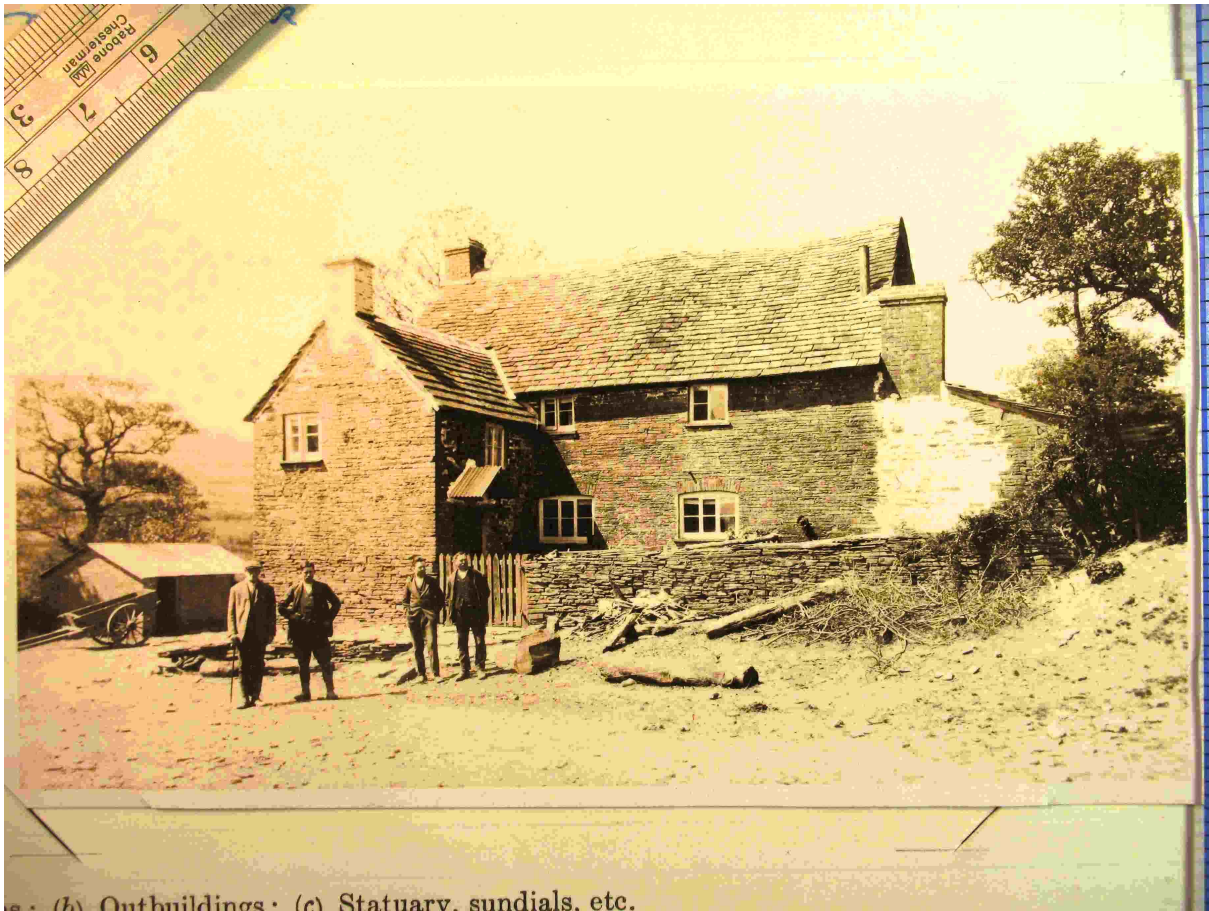
10. **Bibliography:**

11. **No. of Ordnance Sheet (6-in.):** *XXXVII SE.*

12. **Signature of Investigator.** *J.W. Blox*

The History of Ewyas Lacy

Document Record



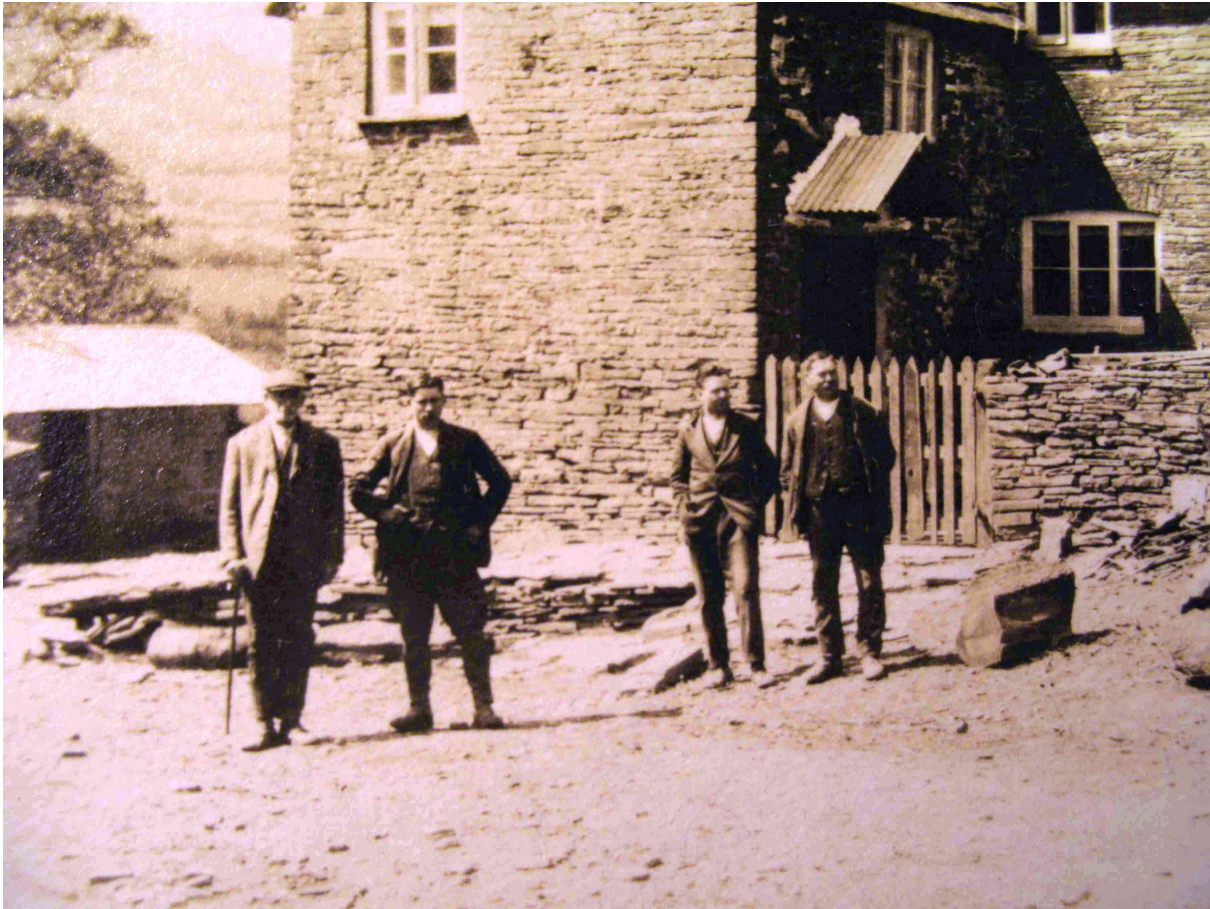
The History of Ewyas Lacy

Document Record



The History of Ewyas Lacy

Document Record



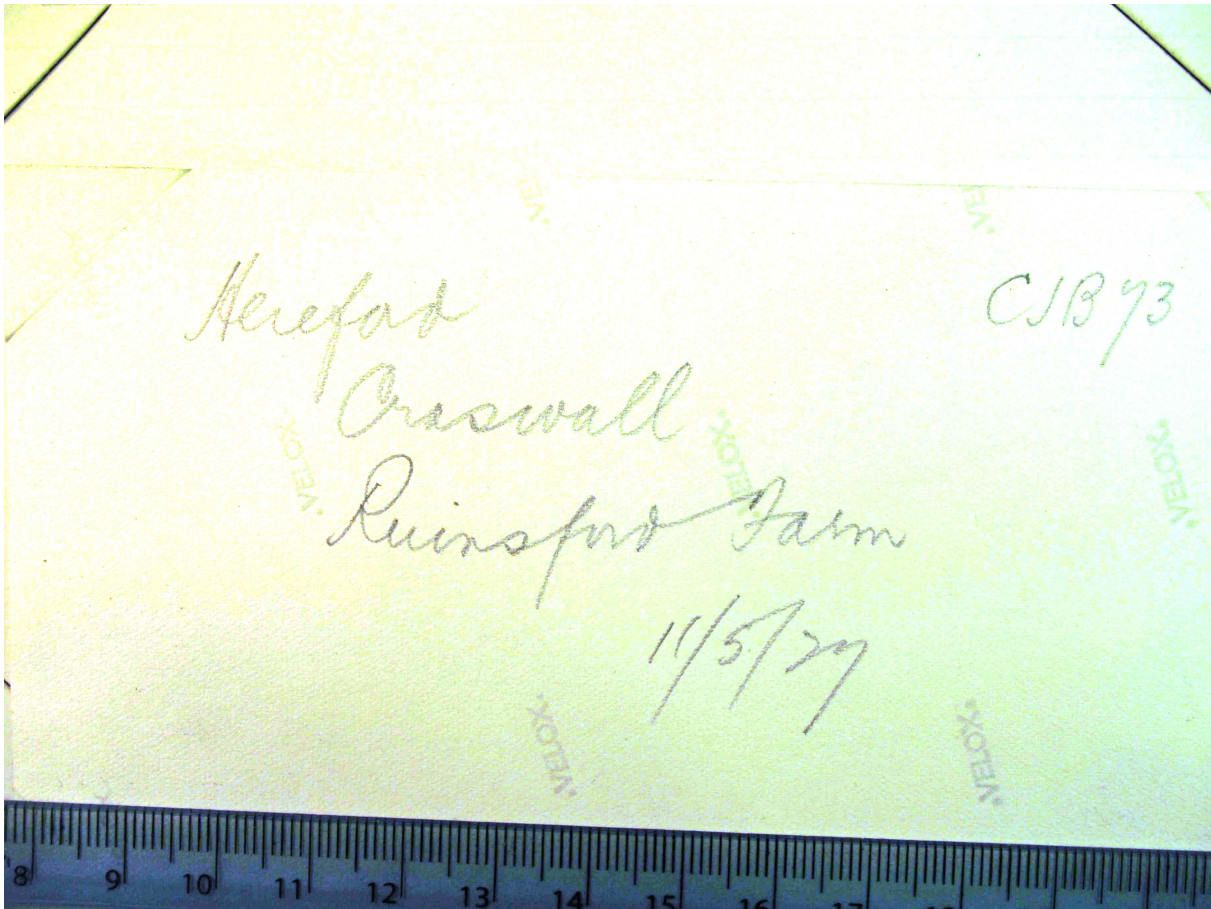
The History of Ewyas Lacy

Document Record



The History of Ewyas Lacy

Document Record



Observations:

Index page is at http://www.ewyaslacy.org.uk/doc.php?d=rs_ewy_0342