



# The History of Ewyas Lacy

Document Record

**Held at:** National Archives

**Reference:** AE/1-4

**Source:** Original Survey Particulars

**Title:** Digital Archive: Royal Commission on Ancient and Historical Monuments - Photographs of original survey particulars, Part 3 of 13

**Place name:** Craswall, Llanveynoe, Longtown, Michaelchurch Escley

**Date:** 1920s

## Description:

Part 3: Craswall and Michaelchurch Escley

This Digital Archive collection contains photographs of surviving parts of the initial surveys of Craswall, Michaelchurch Escley, Llanveynoe and Longtown carried out in the 1920's by the Royal Commission on Ancient and Historical Monuments. They comprise photographs, hand written survey notes and the annotated maps the surveyors used, which are held in the National Archives and formed the basis for the eventual RCAHM Reports on the buildings and structures in the parishes.

The photographs have been made available by Chris Hodges, to whom we are most grateful.

<b>ELSG Ref</b>	<b>RCAHM Record</b>
61	Dukes Farm 1
62	Dukes Farm 2
63	Dukes Farm 3
64	Dukes Farm photos 1-3
65	Dukes Farm photo4
66	Dukes Farm photo5
67	Dukes Farm photo6
68	White Haywood Farm 1
69	White Haywood Farm 2
70	White Haywood Farm photo1
71	White Haywood Farm photo2
72	Great Blackhill Farm 1
73	Great Blackhill Farm 2



# The History of Ewyas Lacy

## Document Record

- 74 Great Blackhill Farm photo1
- 75 Great Blackhill Farm photo2
- 76 Great Blackhill Farm photo3
- 77 Upper Cwm Farm 1
- 78 Upper Cwm Farm 2
- 79 Upper Cwm Farm photo
- 80 Middle Blackhill Farm 1
- 81 Middle Blackhill Farm 2
- 82 Middle Blackhill Farm photo1
- 83 Middle Blackhill Farm photo2
- 84 Middle Blackhill Farm photo3
- 85 Cwm Steps 1
- 86 Cwm Steps 2
- 87 Cwm Steps photo
- 88 Cwm Steps Barn 1
- 89 Cwm Steps Barn 2
- 90 Cwm Steps Barn photo
- 91 Court Farm 1
- 92 Court Farm 2
- 93 Court Farm photo1
- 94 Court Farm photo2

# The History of Ewyas Lacy

## Document Record

**RECORD CARD FOR SECULAR MONUMENTS.**

(N.B.—Detail of special interest is to be entered here, but described fully on a separate card.)

1. **Name and situation of Monument** (with owner's Name and Address). Duke's Farm 1 1/2 miles S.E. of Ewyas Lacy Church, on high ground E of main road

2. **General appearance:** (a) No. of storeys. Two upper in roof  
(b) Building materials. Stone walls  
(c) Roofs. Stone slabs

3. **Historical development** (with dates and small sketch plan).  
The house much altered, may be of 16th cent. origin and the N.E. wing of about the same date, was a separate cottage afterwards joined up to the house. The S.W. wing is probably a 17th century addition, with the barn.

4. **Special features** (if any).

5. **Elevations:** (Beginning with the main front, and mentioning, in the following order:—(a) Walls; (b) Gables; (c) Doors; (d) Windows; (e) Chimneys; (f) Rainwater heads and pipes.)

S.E. front. ground floor, two modern windows & a central doorway: the old doorway was further N.E. but no traces visible outside: first floor has three gabled dormers in the roof. Above roof three square-stone chimney stacks all rebuilt or modern.

N.E. & S.W. ends gabled. S.W. end has a projecting chimney stack apparently modern: E of it a small blocked window, & to first floor a three light window with a 17c oak frame

Back (N.W.) window frames modern

N. E. wing. Small house now a cartshed: In the inner or ~~the~~ S.W. wall are two old windows each with oak frames and three diagonal oak mullions

S.W. wing. Outer or S.W. wall has two old dormer frames probably 17th century. Inner or N.E. wall has an old doorway with a cambered lintel & a window with a heavy square frame. The barn which forms the continuation of this wing is also old, probably 17th century. The S.W. wall of the wing with the barn has been strengthened with four raking stone buttresses. Against the inner (N.E.) wall of barn an outside stone staircase leading to a loft over the wing: the doorway to the loft has a gables head.

6. **Grounds:** (a) Gardens; (b) Outbuildings; (c) Statuary, sundials, etc.

County. *Salisbury*  
Parish. *Overton*  
Sub-Commission. *Salisbury*  
No. of Monument. *11*

P.T.O.

(89,102). Wt. 32,349—47. 500. 12/13. A.&E.W.  
(97,153). .. 6821—53. 6000. 5/14. ..

Back



# The History of Ewyas Lacy

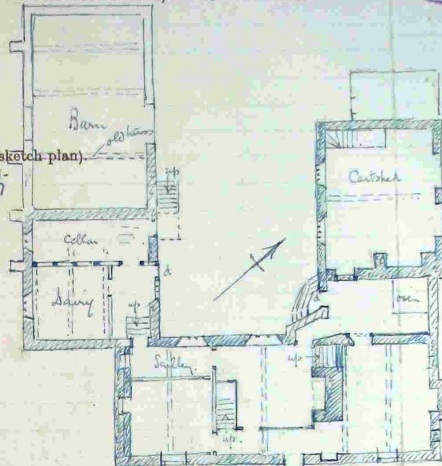
## Document Record

**RECORD CARD FOR SECULAR MONUMENTS.**  
(N.B.—Detail of special interest is to be entered here, but described fully on a separate card.)

1. **Name and situation of Monument** (with owner's Name and Address). *Duke's Farm 1 1/2 miles S.E.*

2. **General appearance:** (a) No. of storeys. *Two up & in roof*  
(b) Building materials. *Stone walls*  
(c) Roofs. *stone slabs*

3. **Historical development** (with dates and small sketch plan).  
*The house, much altered, may be of 16th cent. origin and the N.E. wing of about the same date, was a separate cottage afterwards joined up to the house. The S.W. wing is probably a 17th century addition, with the barn.*




4. **Special features** (if any).

5. **Elevations:** (Beginning with the main front, and mentioning, in the following order:—(a) Walls; (b) Gables; (c) Doors; (d) Windows; (e) Chimneys; (f) Rainwater heads and pipes.)

*S.E. front: ground floor, two modern windows & a central doorway: the old doorway was further N.E. but no traces visible outside: first floor has three gabled dormers in the roof. Above top three square stone chimney stacks all rebuilt or modern.*  
*N.E. end: gabled. S.W. end has a projecting chimney stack apparently modern: E. side a small blocked window, & to first floor a three light window with a 17c. oak frame*  
*Back (N.W.) narrow panes modern*

*N.E. wing: Small house now a cartshed: In the inner or ~~outer~~ S.W. wall are two old windows each with oak panes and three diagonal oak mullions*

*S.W. wing: Outer or S.W. wall has two old narrow panes probably 17th century. Inner or N.E. wall has an old doorway with a cambered lintel  , confined to a window with a heavy square frame*  
*The barn which forms the continuation of this wing is also old probably 17th century: the S.W. wall of the wing with the barn has been strengthened with four raking stone buttresses. Against the inner (N.E.) wall of barn on outside some staircase leading to a loft over the wing: the doorway to the loft has a gabled head.*

6. **Grounds:** (a) Gardens; (b) Outbuildings; (c) Statuary, sundials, etc.

P.T.O.

No. of Monument. ||

Sub-Commission. *London*

Parish. *Overton*

County. *Salisbury*

(89,102). Wt. 33,340—47. 500. 12/13. A.&E.W.  
(97,153). " 5021—53. 6000. 6/14. "



# The History of Ewyas Lacy

## Document Record

7. Interior: (Disposition of rooms, if original, giving fittings as they occur (see list); beginning with the ground floor, following with the basement, and working up to the attics; staircases in the same manner.)

Fittings:  
(Reminder list)

- (1) Ceilings.
- (2) Cupboards (fixed).
- (3) Doors and Overdoors.
- (4) Fireplaces and Mantel-pieces.
- (5) Glass.
- (6) Paintings.
- (7) Panelling.
- (8) Parquetry and floors.
- (9) Plasterwork on internal walls.
- (10) Roofs and beams (internal).
- (11) Screens.
- (12) Tapestries.
- (13) Miscellanea (e.g., carving, ironwork, locks, &c.).

The main block has a central chimney stack probably old with a modern grate in it. NW of the <sup>chimney stack</sup> fireplace an old stone steep stair. SE of the chimney stack was the former entrance lobby which has a blocked doorway which formed the entrance.

The middle room, SW of the chimney stack, has an old chamfered ceiling beam with broad stops and a plastered ceiling: opening the doorway to the old staircase is a 6' x 17" one with moulded fillets planed on it. SW of the room is a modern staircase. Part of the SE. side of room cut off for a passage or entrance lobby.

The NE (end) room has a stop chamfered ceiling beam and a plastered ceiling; also another against the central chimney stack: the fireplace in the outer (NE) wall is modern.

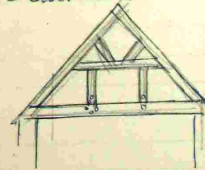
The SW (end) room has a chamfered ceiling beam with broad stops: part of the room is now cut off by a partition for a passage ('scullery') leading to the 2<sup>nd</sup> wing.

The upper storey is much altered but retains heavy oak roof-purlins. The 2<sup>nd</sup> wing contains a dairy + a cider cellar divided from each other by an old timberframed partition. The wing has stop chamfered ceiling beams with moulded stops and the cider cellar has an open timbered ceiling with square rafters.

The NE wing: Behind the main block and approached by a built-out skew passage way is a bakehouse probably an 18<sup>th</sup> or 19<sup>th</sup> century addition joining up the main block with the further part of this wing. In its SE. wall (the back wall of the main block) is an old doorway with an oak frame and four-centred oak lintel.

The rather part of the wing seems to have been a separate cottage originally, lighted by the previously mentioned windows with the diagonal mullions. In its SE. wall is a large open fireplace, next to which is an old (dense) doorway with an oak frame. The upper floor non-existent except a small portion at the further end formerly approached by ~~door~~ a now almost ruinous wood staircase: wing now used as a cart shed.

The W. barn may have been partly reconstructed inside. One of the three roof trusses is original, of heavy timbers ~~which~~ which have divers markings on them for identification in reconstruction: the other two trusses are simpler + probably later.

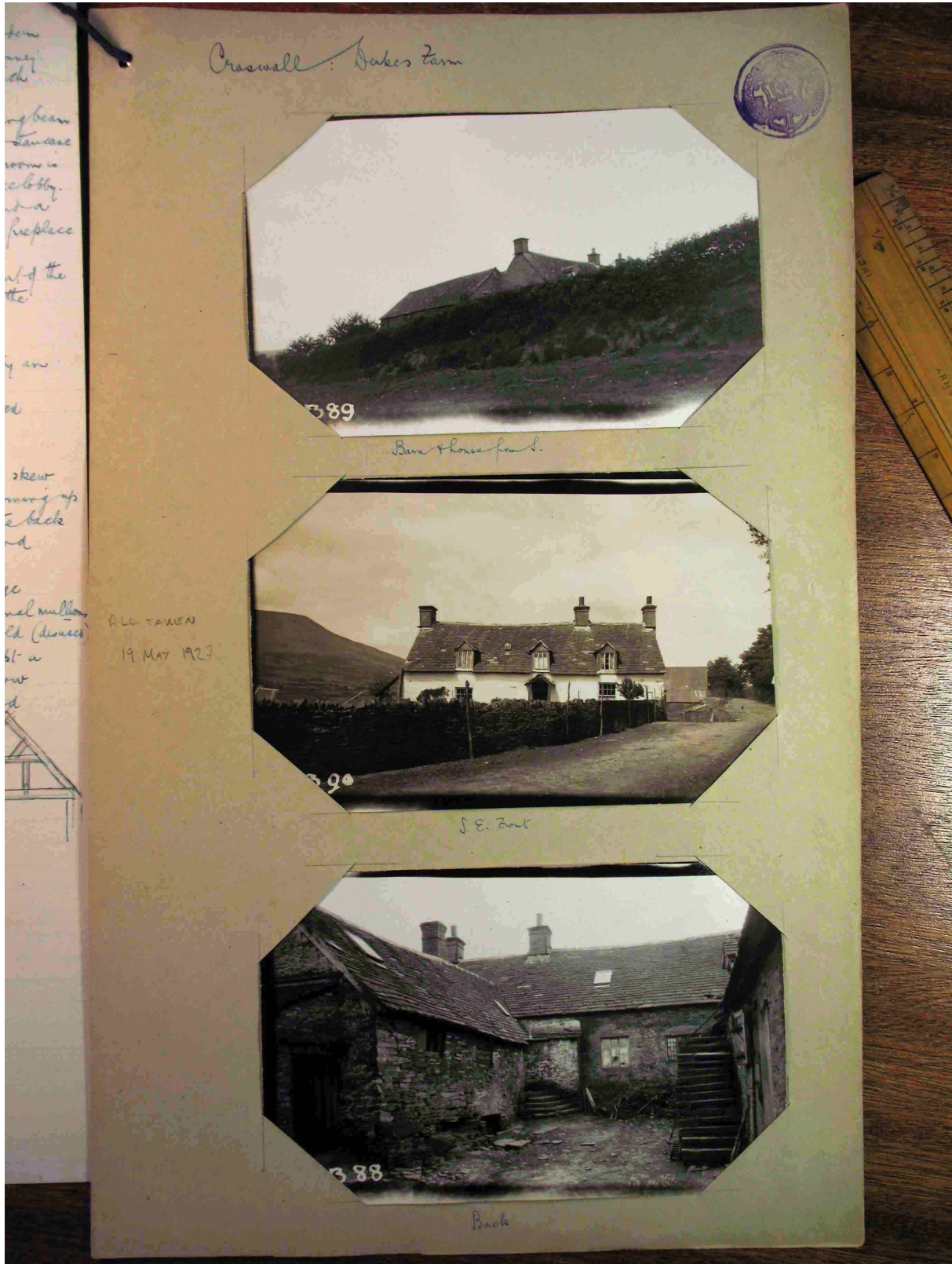


ALL TAKEN  
19 MAY 1927

- 8. Condition: Good
- 9. Visited by (with dates): J.W. Bloe May 19<sup>th</sup> 1927
- 10. Bibliography:
- 11. No. of Ordnance Sheet (6-in.): XXXVII S.E.
- 12. Signature of Investigator: J.W. Bloe

# The History of Ewyas Lacy

Document Record





# The History of Ewyas Lacy

Document Record





# The History of Ewyas Lacy

Document Record



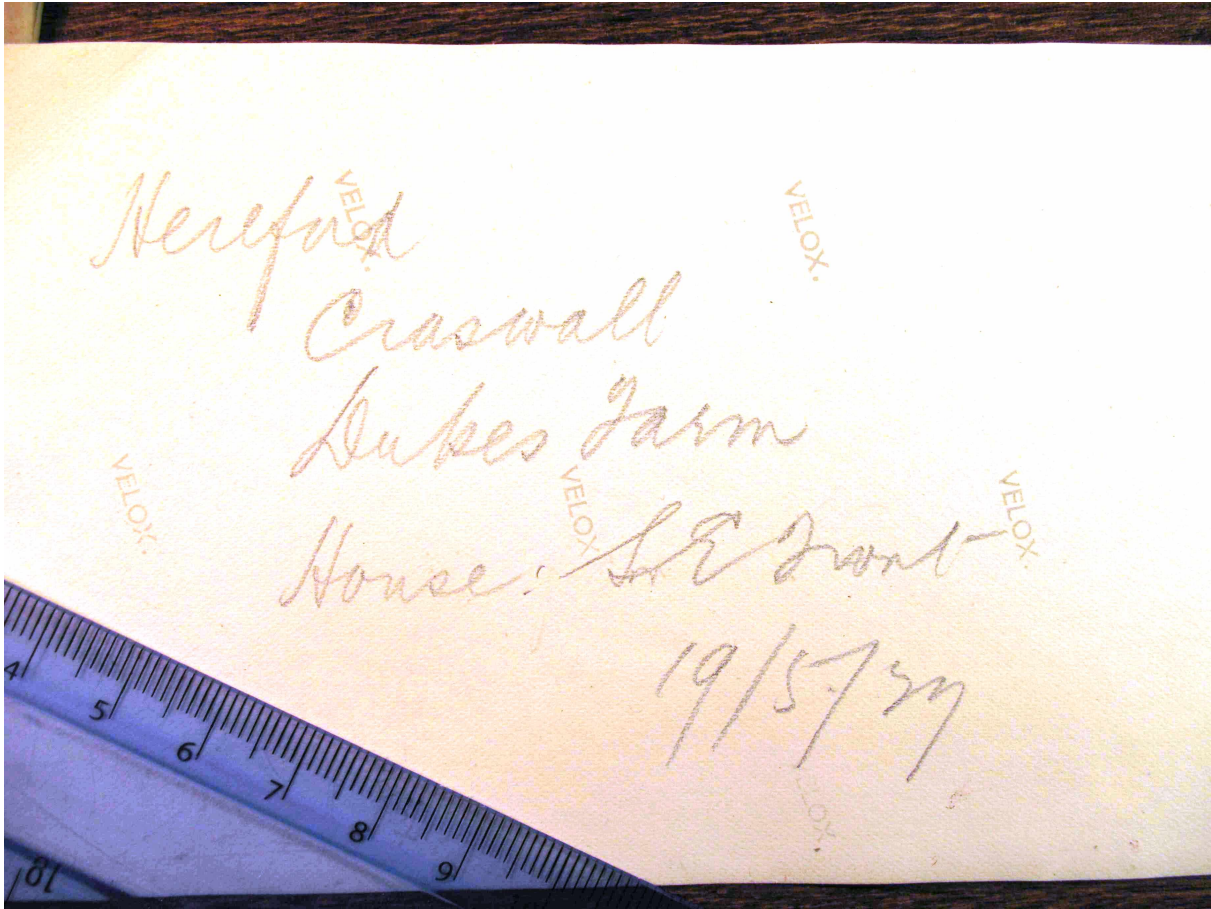
# The History of Ewyas Lacy

Document Record



# The History of Ewyas Lacy

Document Record





# The History of Ewyas Lacy

Document Record



# The History of Ewyas Lacy

## Document Record

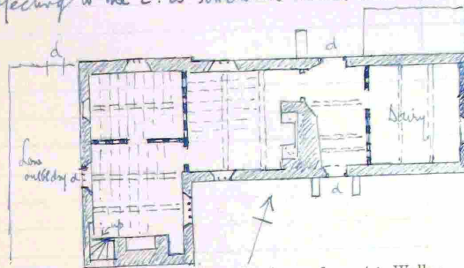
B.

### RECORD CARD FOR SECULAR MONUMENTS.

(N.B.—Detail of special interest is to be entered here, but described fully on a separate card.)

1. Name and situation of Monument (with owner's Name and Address). *White Baywood Farm  
1 1/2 miles E.E. of church*
2. General appearance: (a) No. of storeys. *Two*  
(b) Building materials. *Stone rubble walls*  
(c) Roofs. *Stone slabs*

3. Historical development (with dates and small sketch plan).  
*The date 1635 on the doorhead in the partition between the two wings of the L shaped plan probably marks the age of the whole building, altho' there is some slight suggestion that the longer and lower wing projecting to the E. is somewhat earlier than the other which fits the date mentioned.*



4. Special features (if any).

5. Elevations: (Beginning with the main front, and mentioning, in the following order:—(a) Walls; (b) Gables; (c) Doors; (d) Windows; (e) Chimneys; (f) Rainwater heads and pipes.)

*The walls are of shaly local stone rubble, and the central chimney of the E wing and S. end chimney of the W wing are old stone square stacks.  
The window frame in the E wall of the W wing is of 1635 and is of four lights with ~~old~~ moulded frame and mullions of oak. The other windows have plain oak frames excepting that at the E. end of E wing on the ground floor, which has a square frame and four mullions set diagonally and the window above this which had three similar mullions of which one remains in place.  
The outer doorways are of modern repair.*



6. Grounds: (a)



P.T.O.

(89,102), Wt. 33,349—47,500. 12/13. A.&E.W.  
(97,153), .. 5021—53,6000. 5/14. ..

County. *Hereford*

Parish. *Leafield*

Sub-Commission.

No. of Monument. *1*



# The History of Ewyas Lacy

## Document Record

7. Interior: (Disposition of rooms, if original, giving fittings as they occur (see list), beginning with the ground floor, following with the basement, and working up to the attic; staircases in the same manner.)

**Fittings:**  
(Reminder list)

- (1) Ceilings
- (2) Cupboards (fixed).
- (3) Doors and Overdoors.
- (4) Fireplaces and Mantel-pieces.
- (5) Glass.
- (6) Paintings.
- (7) Panelling.
- (8) Parquetry and floors.
- (9) Plasterwork on internal walls.
- (10) Roofs and beams (internal).
- (11) Screens.
- (12) Tapestries.
- (13) Miscellaneous (e.g., carving, ironwork, locks, &c.).

The E wing, running E & W) has a central chimney stack which had a wide fireplace (now reduced) towards its W. room. Behind (E of) the chimney stack is a wide passage way with rough ceiling beams across it, and dividing it from the Dairy which forms the end room (E) of the wing is an oak partition of the local type with wide oak studs chamfered on the W face and narrow oak-board panels. The door frame on it is old but has been cut into the lintel for heat wain and into the posts apparently for passage of a barrel. ~~There is a door~~ The door is an old battered oak door with strap hinges.

The Dairy has rough cross beams in the ceiling and open timbered ceiling with plain rafters. It is lighted by the window with the diagonal mullions.

The room W. of the central chimney stack has two stop chamfered ceiling-beams and an open timbered ceiling with square rafters.

The W wall of the room is formed by an oak partition like the other dividing the wing from the W wing. This partition has wide studs chamfered on the E face (only) and at its S end is a doorway with a segmental lintel which is carved with the date 1635. The old battered door has strap hinges like that in the Dairy and has a peculiar latch.

The W wing is divided into two rooms by a similar oak partition to the last with a segmental-headed doorway in the middle.

The Southern room (Dining Room) has two stop chamfered beams like those in the W room of the E wing and an open timbered ceiling with chamfered rafters.

The N room (the smaller) has a like ceiling with one beam. In the S wall of the S room is a wide fireplace reduced for modern grate and W of the fireplace a winding stone staircase with oak treads. This room is lighted by the window with the mullioned frame & mullions.

The upper storey or roof space over the E wing is not used & is unlighted except for the broken window in the E wall. The loft which this light is entered by a doorway in the wide passage approached by a ladder in the passage.

The upper storey of the W wing is partly in the roof and the rooms have been ~~boarded~~ match boarded hiding most of the timber construction. The roof has three oak purlins on each side.

8. Condition: Fairly good

9. Visited by (with dates): J.W. Blox May 18 1927

10. Bibliography:

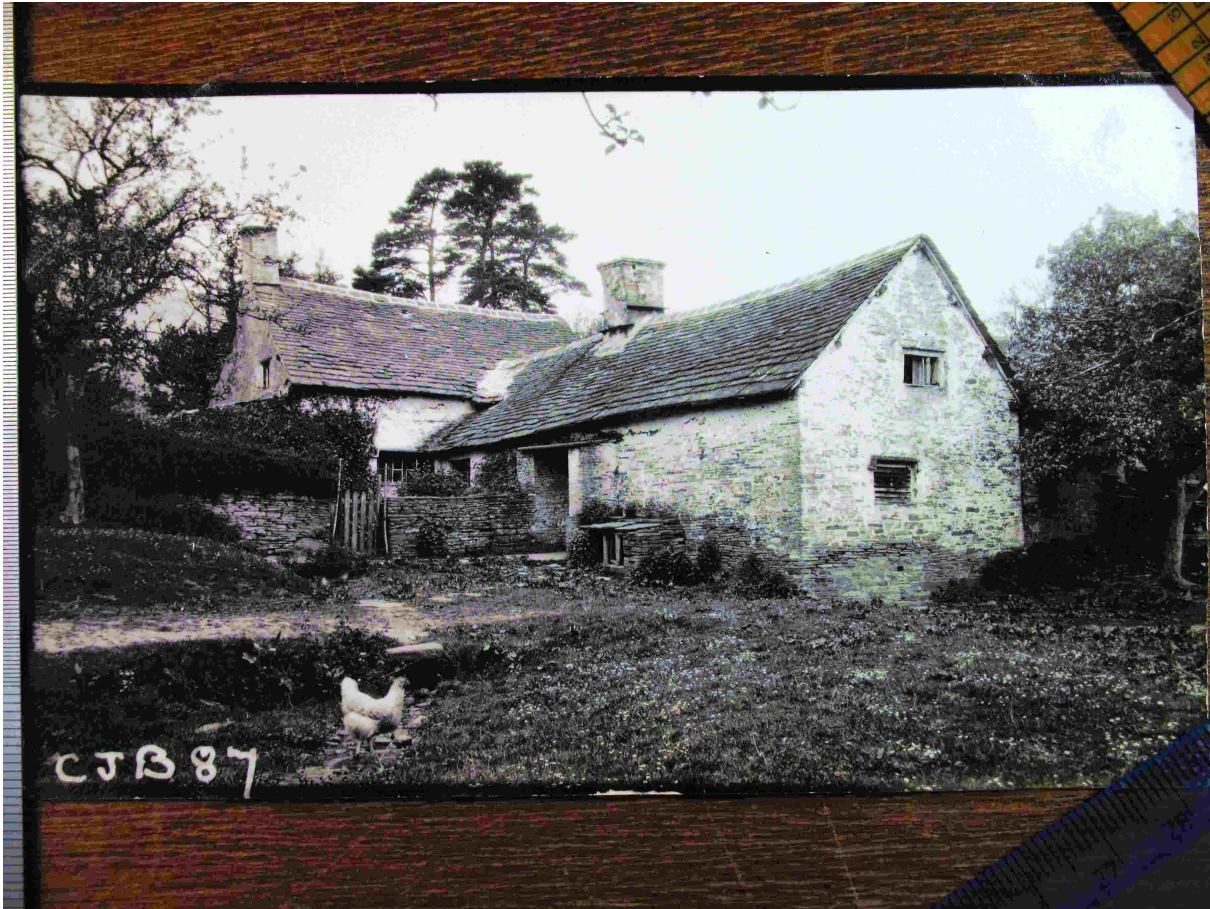
11. No. of Original Sheet (6-in.): XXXVII SE.

12. Signature of Investigator: J.W. Blox



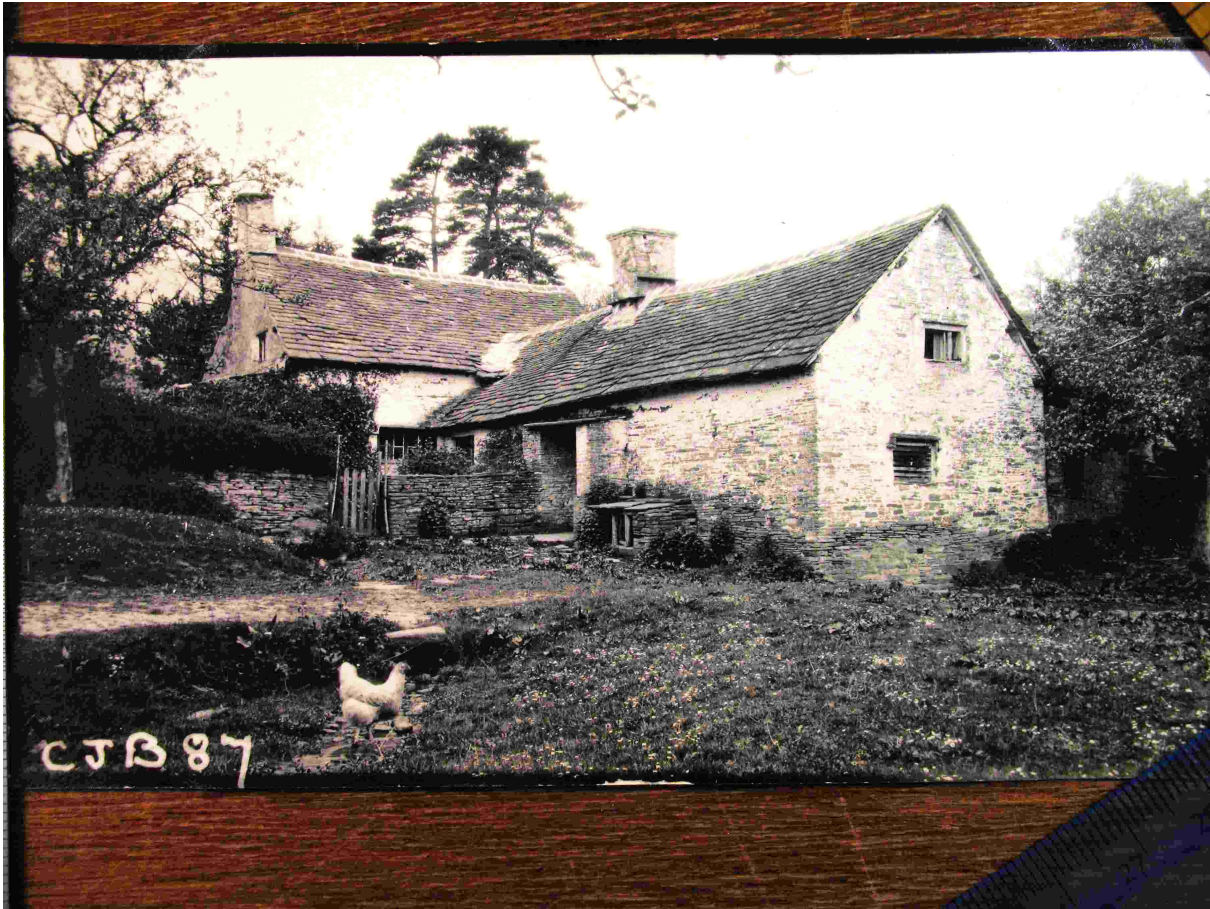
# The History of Ewyas Lacy

Document Record



# The History of Ewyas Lacy

Document Record

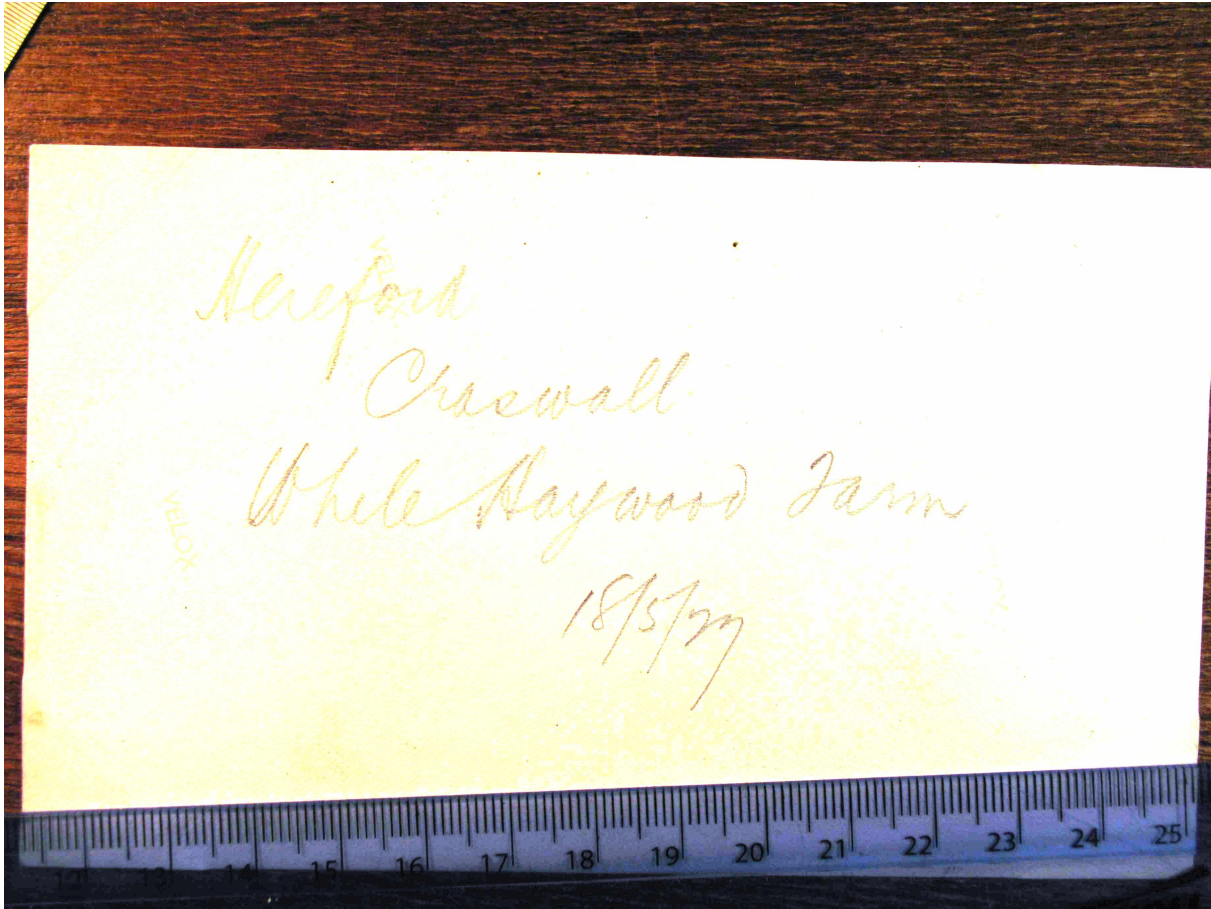






# The History of Ewyas Lacy

Document Record







# The History of Ewyas Lacy

## Document Record

7. Interior: (Disposition of rooms, if original, giving fittings as they occur (see list), beginning with the ground floor, following with the basement, and working up to the attics; staircases in the same manner.)

**Fittings:**  
(Reminder list)

- (1) Ceilings.
- (2) Cupboards (fixed).
- (3) Doors and Overdoors.
- (4) Fireplaces and Mantel-pieces.
- (5) Glass.
- (6) Paintings.
- (7) Panelling.
- (8) Parquetry and floors.
- (9) Plasterwork on internal walls.
- (10) Roofs and beams (internal).
- (11) Screens.
- (12) Tapestries.
- (13) Miscellaneous (e.g., carving, ironwork, locks, &c.).

The passage across the W. end of the lower portion from the N. to the S. doorway has an old oak partition on its E. side of the common local type with wide stop-chamfered studs and oak board panels. In it are ~~two~~ <sup>three</sup> doorways. The northern original with a segmental-pointed head; the southern has been widened & retains half its similar lintel. The passage has an open-timbered ceiling with rough square rafters. The W. side of the passage is the back of the central chimney stack & has a heavy stop-chamfered ceiling beam. The two rooms, E. of the passage, have a pair of stop-chamfered ceiling-beams, a plastered ceiling and intermediate partition.

The main room W. of the central chimney stack has a large open fireplace N. of which is an original stone staircase. The ceiling has two stop-chamfered ceiling beams and open rafters of square section. Another old partition (papered over) of the same type as the first mentioned divides this room from the western most room.

The western most room has a modern fireplace; in the ceiling is an old stop-chamfered ~~beam~~ (papered over) and open rafters of square section. A modern staircase entered from the S.W. wing cuts off the S. end of the room.

The room on the S.W. wing has an oak partition of the same type with stop-chamfered studs dividing it from the W. room of the main block. Above it is an old ceiling beam. The ceiling of this room is probably later than the others & has a roughly worked stop-chamfered beam and small sawn open rafters.

The upper story has been modernized but the lower portion of the main block has three heavy old oak purlins on each side of it.

8. Condition: Good upper part rebuilt in main block

9. Visited by (with dates): J. W. Blue May 19<sup>th</sup> 1927

10. Bibliography:

11. No. of Ordnance Sheet (6-in.): XXXVII SE.

12. Signature Investigator: J. W. Blue



# The History of Ewyas Lacy

Document Record



# The History of Ewyas Lacy

Document Record





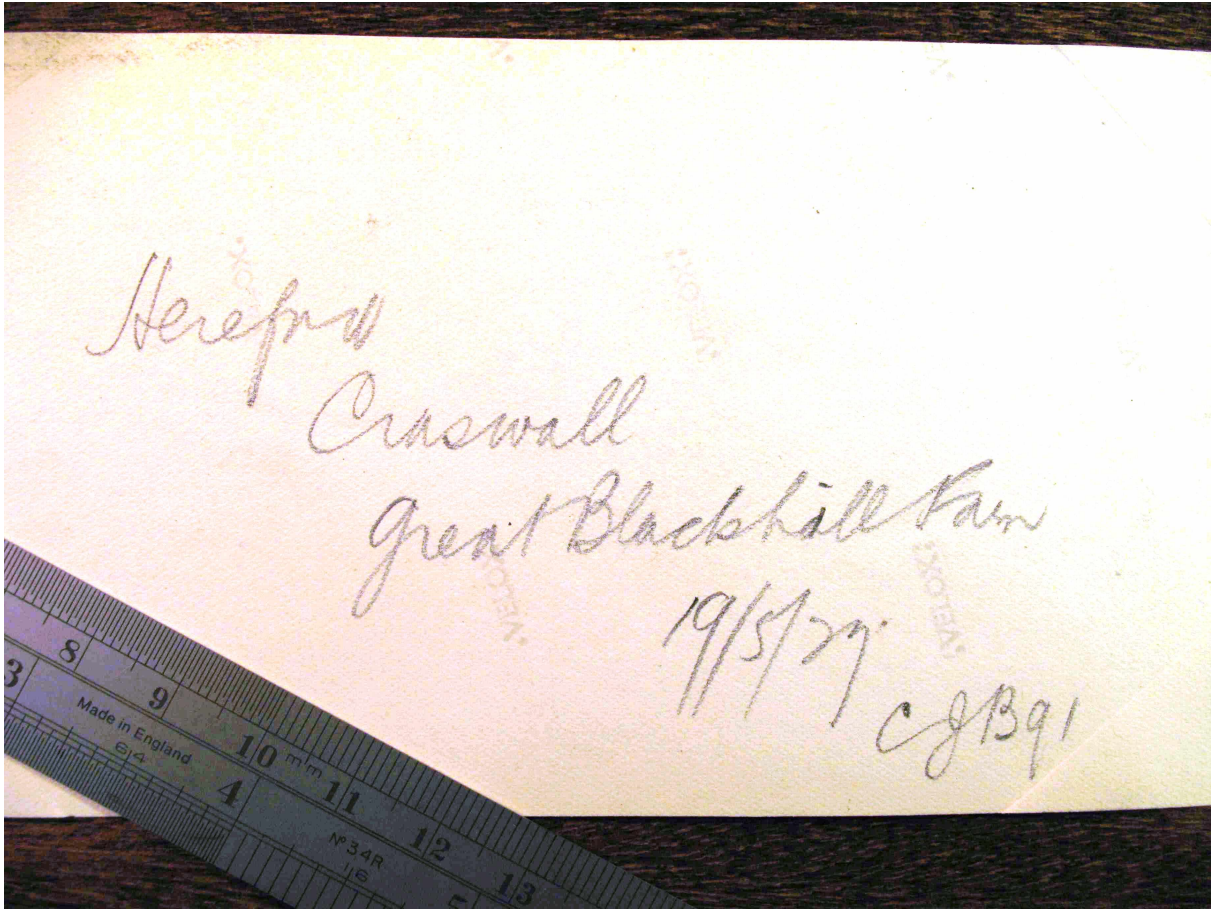
# The History of Ewyas Lacy

Document Record



# The History of Ewyas Lacy

Document Record







# The History of Ewyas Lacy

## Document Record

7. **Interior:** (Disposition of rooms, if original, giving fittings as they occur (see list), beginning with the ground floor, following with the basement, and working up to the attics; staircases in the same manner.)

<b>Fittings:</b> (Remainder list).	The two oak screens on the ground floor are of the usual local type with wide stiles, oak-board filling & probably formed the two sides of an original passage.
(1) Ceilings	In the room W. of the screens has two heavy chamfered beams and an open timbered ceiling. In the W. wall a wide fireplace reduced & fitted with a chimney piece dated 1781.
(2) Cupboards (fixed).	
(3) Doors and Overdoors.	Not allowed to see more of the house made a behind.
(4) Fireplaces and Mantel-pieces.	
(5) Glass.	
(6) Paintings.	
(7) Panelling.	
(8) Pa...	
(9) Plasterwork on internal walls.	
(10) Roofs and beams (internal).	
(11) Screens.	
(12) Tapestries.	
(13) Miscellaneous (e.g., carving, ironwork, locks, &c.).	

8. **Condition:** Good much altered externally

9. **Visited by** (with dates): J.W. Bloe May 19<sup>th</sup> 1927

10. **Bibliography:**

11. **No. of Ordnance Sheet** (6-in.): XXLVII SE.

12. **Signature of Investigator.** J.W. Bloe



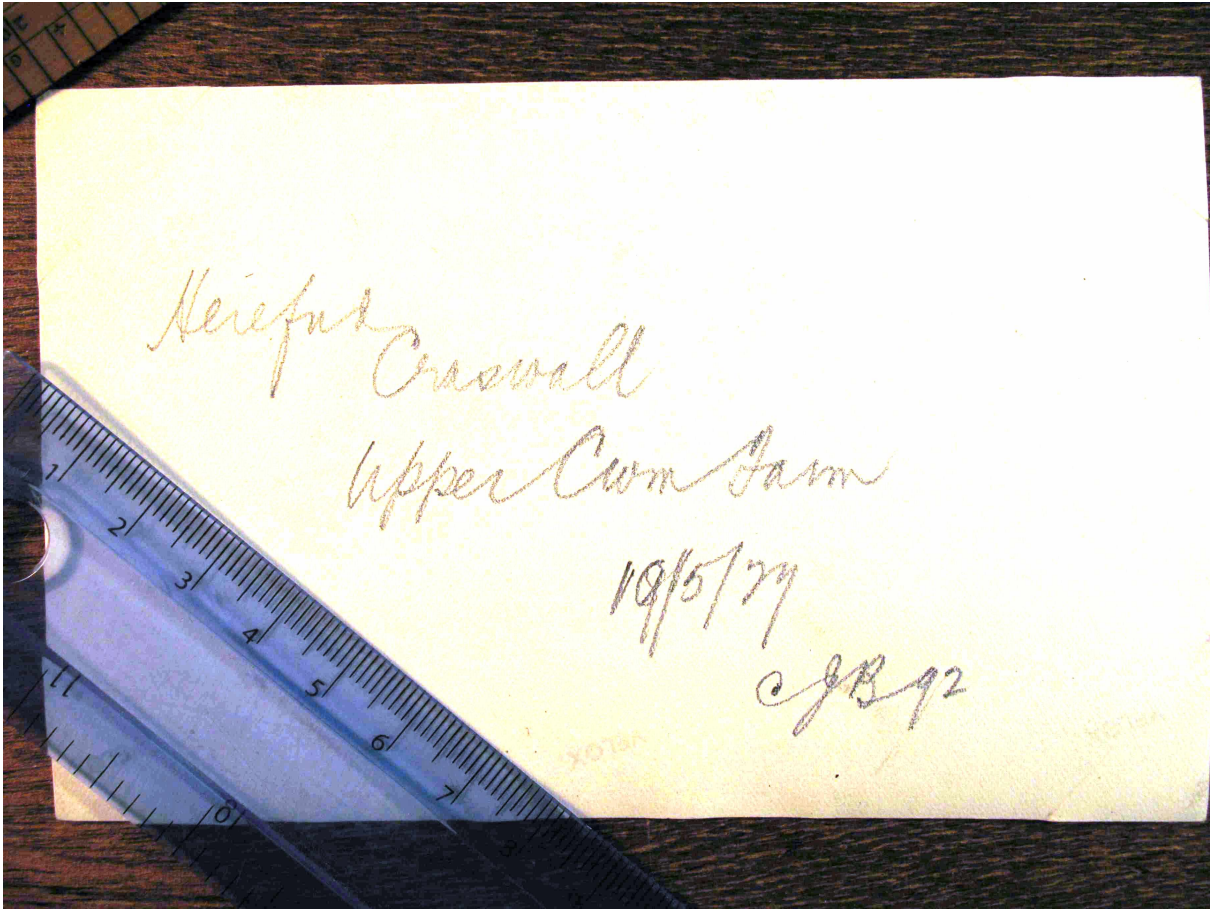
# The History of Ewyas Lacy

Document Record



# The History of Ewyas Lacy

Document Record





# The History of Ewyas Lacy

## Document Record

**B.**

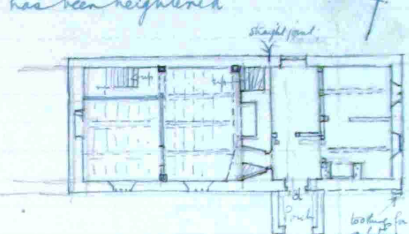
**RECORD CARD FOR SECULAR MONUMENTS.**

(N.B.—Detail of special interest is to be entered here, but described fully on a separate card.)

1. Name and situation of Monument (with owner's Name and Address). *Middle Blackhill Farm  
2 1/2 miles SSE of church*

2. General appearance: (a) No. of storeys. *Two upper in roof*  
(b) Building materials. *Stone walls*  
(c) Roofs. *stone slabs*

3. Historical development (with dates and small sketch plan).  
*The house may be of 15<sup>th</sup> century origin & retains two crutch-trusses (locally known as 'blades') and a stone arched doorway. It was probably a small rectangular building and was lengthened eastwards in the 16<sup>th</sup> or 17<sup>th</sup> century. In modern times the upper story of the W. half has been heightened. The upper floor in the W. half was probably inserted in the 16<sup>th</sup> or 17<sup>th</sup> century.*



4. Special features (if any).


5. Elevations: (Beginning with the main front, and mentioning, in the following order:—(a) Walls; (b) Gables; (c) Doors; (d) Windows; (e) Chimneys; (f) Rainwater heads and pipes.)

*S. Front. The western half is higher than the eastern and has at its E. end (above the central chimney stack) an old square chimney of stone: a modern chimney at the W. end. The window frames modern but the entrance doorway into the passage E. of the central chimney stack has an old chamfered oak frame and a three-battered door hung with two strap hinges with ornamental ends. In front is a rather dilapidated stone porch probably 16<sup>th</sup>.*

*E. end. The gable end of the lower portion has two windows the southern blocked the northern an old one with oak frame and two chamfered mullions.*

*Back: There are no windows & the doorway opposite the front entrance is blocked.*

6. Ground



County. *Hereford*

Parish. *Cravenall*

Sub-Commission. *Secular*

No. of Monument. *15*

P.T.O.

(89.102). Wt. 33,240—47. 500. 12/13. A.&E.W.  
(97.153). .. 5621—53. 6000. 5/14. ..

# The History of Ewyas Lacy

## Document Record

7. Interior: (Disposition of rooms, if original, giving fittings as they occur (see list), beginning with the ground floor, following with the basement, and working up to the attics; staircases in the same manner.)

- Fittings:**  
(Reminder list.)
- (1) Ceilings.
  - (2) Cupboards (fixed).
  - (3) Doors and Overdoors.
  - (4) Fireplaces and Mantel-pieces.
  - (5) Glass.
  - (6) Paintings.
  - (7) Panelling.
  - (8) Parquetry and floors.
  - (9) Plasterwork on internal walls.
  - (10) Roofs and beams (internal).
  - (11) Screens.
  - (12) Tapestries.
  - (13) Miscellaneous (e.g., carving, ironwork, locks, &c.).

Inside the S. entrance is a small square lobby perhaps part of ~~the~~ original passage but now divided off from the N. part by a partition in which is a doorway with an oak frame & segmental lintel. The E. side of the lobby & chamber N. of it is an old oak framed partition with wide panels. The two rooms E. of the lobby are modernized.

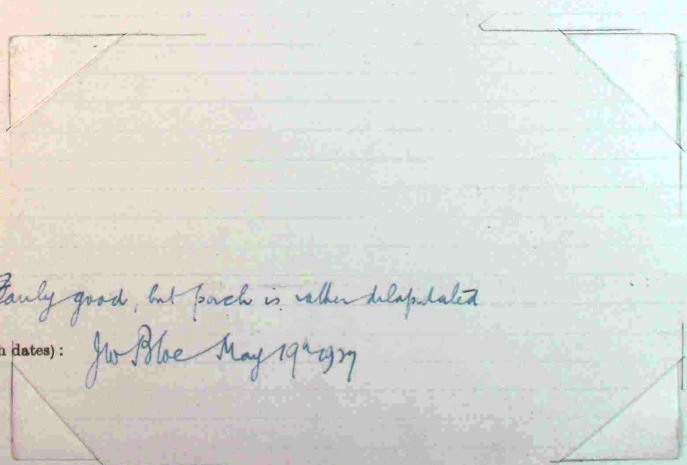
On the W. side of the lobby (flanking the central chimney stack & of very great thickness) is a stone doorway with chamfered jambs and three-centred arch, and internal splays reveals. This is an unusual feature among the local houses of the Black Mountain district & may be of the 15<sup>th</sup> or early 16<sup>th</sup> century.

The room into which the stone doorway opens, W. of the central chimney stack, has a wide fireplace, flanking which on the other side (the N.) is an old staircase of the usual local type.

The ceiling has three longitudinal ceiling-beams, stop-chamfered and open stop-chamfered rafters.

On both sides of this room are cutch-tusses (or 'blades') cutting through the ceiling to the apex of the roof; one against the chimney breast has had its southern leg cut away and replaced by a heavy skew beam at ceiling level. The partition under the western tuss is plastered & may be old.

The room W. of the partition (not seen) is said to have a similar ceiling to the other room. N. of it are modern stairs.



8. Condition: Early good, but patch is rather dilapidated

9. Visited by (with dates): J.W. Blue May 19<sup>th</sup> 1937

10. Bibliography:

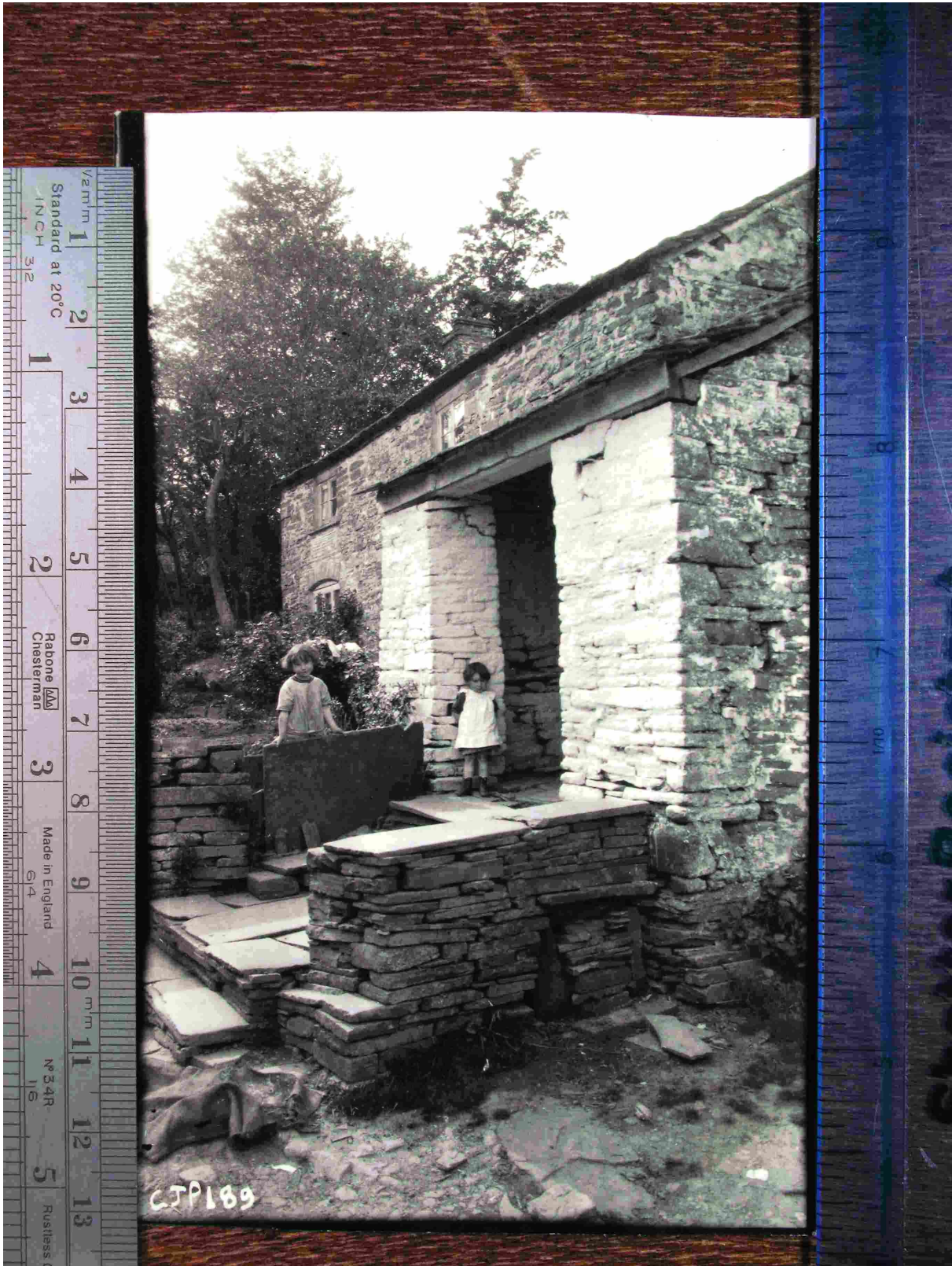
11. No. of Ordnance Sheet (6-in.): XLIII NE.

12. Signature of Investigator: J.W. Blue.



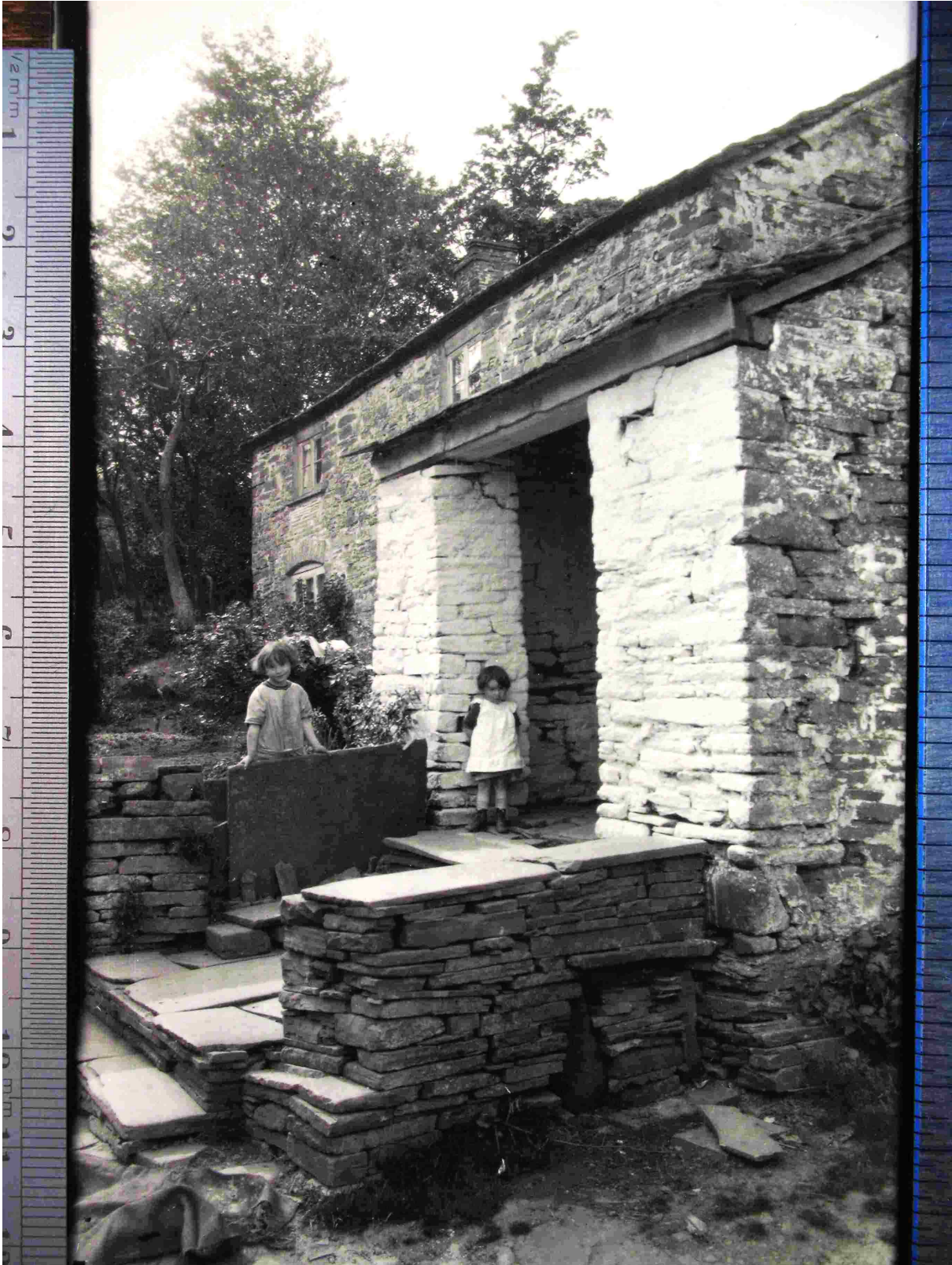
# The History of Ewyas Lacy

Document Record



# The History of Ewyas Lacy

Document Record





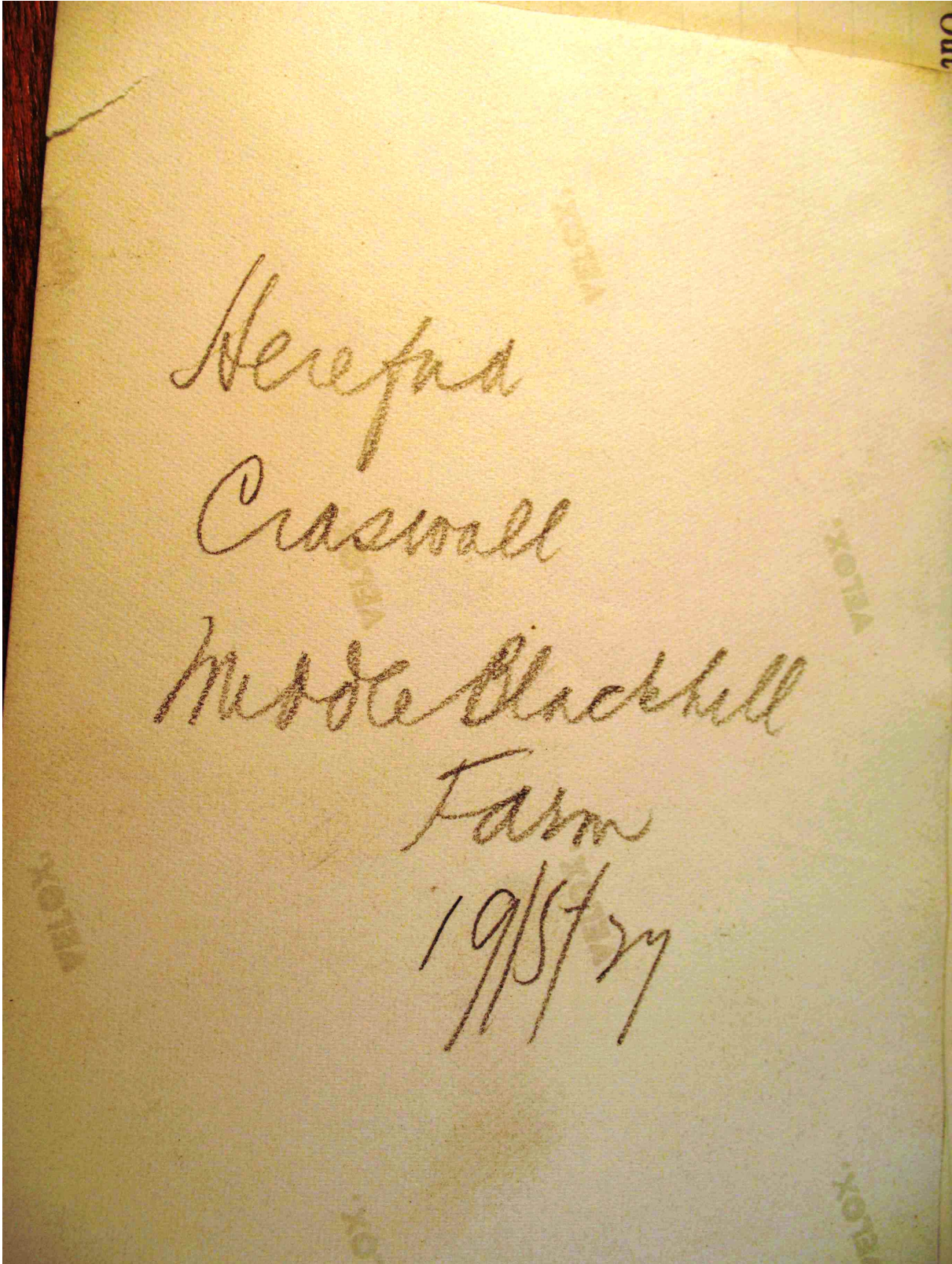
# The History of Ewyas Lacy

Document Record



# The History of Ewyas Lacy

Document Record





# The History of Ewyas Lacy

## Document Record

**RECORD CARD FOR SECULAR MONUMENTS.**  
(N.B.—Detail of special interest is to be entered here, but described fully on a separate card.)

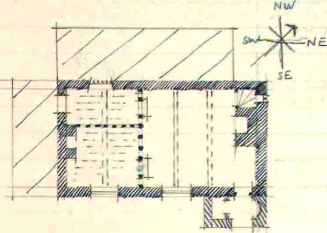
**B**

**RECORD CARD FOR SECULAR MONUMENTS.**  
(N.B.—Detail of special interest is to be entered here, but described fully on a separate card.)

1. Name and situation of Monument (with owner's Name and Address). *Corn Steps*  
*W ofington, Cransall Rd not quite 3 miles S.S.E of Cransall Church.*

2. General appearance: (a) No. of storeys. *2 rather*  
(b) Building materials. *Stone*  
(c) Roofs. *Stone slates.*

3. Historical development (with dates and small sketch plan).  
*An early 17th c. house.*  
*The porch was probably added*  
*in the 18th c.*



4. Special features (if any).

5. Elevations: (Beginning with the main front, and mentioning, in the following order:—(a) Walls; (b) Gables; (c) Doors; (d) Windows; (e) Chimneys; (f) Rainwater heads and pipes.)

*S.E. Elev. Stone. Projecting porch with segmental step chamfered beam over opening. The front door has a heavy beaded frame & beaded battened door of early 18th c. date. The windows contain some old glass on 1st floor is a window with old 6 light diamond mullioned frame & projecting stone label.*

*S.W. Elev. Gabled. lower part concealed by modern addition on gable is a small square window with old wood frame. Rectangular stack*

*N.E. Elev. Gabled. Rectangular stone stack & a slight diamond mullioned window*

*N.W. Elev. Concealed by modern addition*

6. Grounds: (a) Gardens; (b) Outbuildings; (c) Statuary, sundials, etc.

County. *Shropshire*  
Parish. *Cransall*  
Sub-Commission. *Sevenson*  
No. of Monument. *16*

P.T.O.

(89,102). Wt. 33,349—47. 500. 12/13. A.&E.W.  
(97,153). „ 4621—53. 6000. 5/14. „

# The History of Ewyas Lacy

## Document Record

**B**

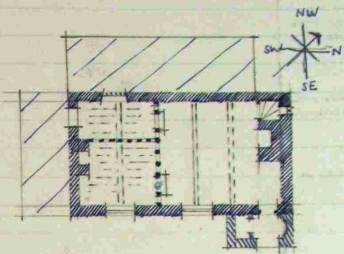
**RECORD CARD FOR SECULAR MONUMENTS.**

(N.B.—Detail of special interest is to be entered here, but described fully on a separate card.)

1. Name and situation of Monument (with owner's Name and Address). *Corn Steps*  
*w ofington. Cranswell Rd not quite 3 miles S.S.E of Cranswell Church.*

2. General appearance: (a) No. of storeys. *2 + attic*  
(b) Building materials. *Stone*  
(c) Roofs. *Stone slates.*

3. Historical development (with dates and small sketch plan).  
*An early 17th c. house.*  
*The porch was probably added*  
*in the 18th c.*



4. Special features (if any).

5. Elevations: (Beginning with the main front, and mentioning, in the following order:—(a) Walls; (b) Gables; (c) Doors; (d) Windows; (e) Chimneys; (f) Rainwater heads and pipes.)

*S.E. Elev. Stone. Projecting porch with segmental step*  
*chanfered beam over opening. The front*  
*door has a heavy beaded frame & beaded battened*  
*door of early 18th c. date. The windows*  
*contain some old glass on 1st floor is*  
*a window with old 6 light diamond mullioned*  
*frame & projecting stone label.*

*S.W. Elev. Gabled. lower part concealed by modern*  
*addition on gable is a small square*  
*window with old wood frame. Rectangular stack*

*N.E. Elev. Gabled. Rectangular stone stack (a slight diamond*  
*N.W. Elev. Concealed by modern addition (mullioned window*  
*obscured).*

6. Grounds: (a) Gardens; (b) Outbuildings; (c) Statuary, sundials, etc.

County. *Shropshire* Parish. *Cranswell* Sub-Commission. *Secular.* No. of Monument. *16.*

P.T.O.

(80,102). W. 33,349—47. 500. 12/13. A.&E.W.  
5621—53. 6000. 5/14.



# The History of Ewyas Lacy

## Document Record

7. Interior: (Disposition of rooms, if original, giving fittings as they occur (see list), beginning with the ground floor, following with the basement, and working up to the attics; staircases in the same manner.)

Fittings:	
(Reminder list).	
(1) Ceilings.	
(2) Cupboards (fixed).	
(3) Doors and Overdoors.	
(4) Fireplaces and Mantel-pieces.	
(5) Glass.	
(6) Paintings.	
(7) Panelling.	
(8) Parquetry and floors.	
(9) Plasterwork on internal walls.	
(10) Roofs and beams (internal).	
(11) Screens.	
(12) Tapestries.	
(13) Miscellaneous (e.g., carving, ironwork, locks, &c.).	

Internally the ground floor partitions are formed of long wood panels. Ceiling beams are exposed and stop-champed, the joints being exposed in S.W. half of house. Doorway to staircase has a segmental arched head to frame.

8. Condition: Fair

9. Visited by (with dates): J.T. Phillips Oct. 1928.

10. Bibliography:

11. No. of Ordnance Sheet (6-in.): XLIII N.E.

12. Signature of Investigator: J.T. Phillips

# The History of Ewyas Lacy

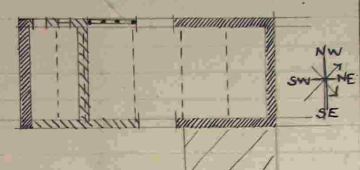
## Document Record

**RECORD CARD FOR SECULAR MONUMENTS.**  
(N.B.—Detail of special interest is to be entered here, but described fully on a separate card.)

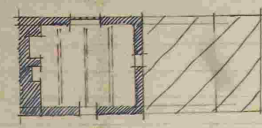
**Name and situation of Monument** (with owner's Name and Address). *Corn Steps Barn*  
*20 yds. S.E. of house & Bakehouse 20 yds. N.W. of house*

**General appearance:** (a) No. of storeys.  
(b) Building materials.  
(c) Roofs. *Stone slates.*

**Historical development** (with dates and small sketch plan).  
*Both buildings are probably same date as house namely early 17th c.*



**4. Special features** (if any).



**5. Elevations:** (Beginning with the main front, and mentioning, in the following order:—(a) Walls; (b) Gables; (c) Doors; (d) Windows; (e) Chimneys; (f) Rainwater heads and pipes.)  
*The Barn has 4 trusses of type  $\Delta$  some modern times. The NE half of the building has stone walls & a basement beneath. The S.W. half has a stone wall at S.W. end. The remainder was timber framed but in modern times the SW half of SE side has been re-built in stone & a cross wall inserted forming a separate beast house at that end while wall to this portion has also been re-built in stone on the N.W. side. The building is gabled at each end. There is some exposed timber framing on NW elevation & a light diamond mullioned window to basement, while latter also has 2 old door frames & a light diamond mullioned window on its N.E. There is a modern addition built on against S.E. side. Stone slate roof. Its condition is poor.*

*The Bakehouse of 1 story rather has stone walls & is roofed with stone slates. The S.W. end is gabled & has a blocked window to attic. The S.E. elevation has an old chamfered door frame with battened door. On N.W. is a slight diamond mullioned window. The NE end is concealed by an extension which has been added in comparatively modern times. Internally the ceiling has exposed stop chamfered beams. Condition - poor.*

**6. Grounds:** (a) Gardens; (b) Outbuildings; (c) Statuary, sundials, etc.

County. *Herefordshire*  
Parish. *Crummell*  
Sub-Commission. *...*  
No. of Monument. *...*

(89,102). W1.33,340-47. 500. 12/13. A.&E.W.  
(97,153). .. 3621-53. 6000. 5/14. ..

P.T.O.




# The History of Ewyas Lacy

## Document Record

7. Interior: (Disposition of rooms, if original, giving fittings as they occur (see list), beginning with the ground floor, following with the basement, and working up to the attics; staircases in the same manner.)

Fittings:
(Reminder list).
(1) Ceilings.
(2) Cupboards (fixed).
(3) Doors and Overdoors.
(4) Fireplaces and Mantel-pieces.
(5) Glass.
(6) Paintings.
(7) Panelling.
(8) Parquetry and floors.
(9) Plasterwork on internal walls.
(10) Roofs and beams (internal).
(11) Screens.
(12) Tapestries.
(13) Miscellanea (e.g., carving, ironwork, locks, &c.).



CTP. 290.

8. Condition :

9. Visited by (with dates): *A.T. Phillips Oct. 1928.*

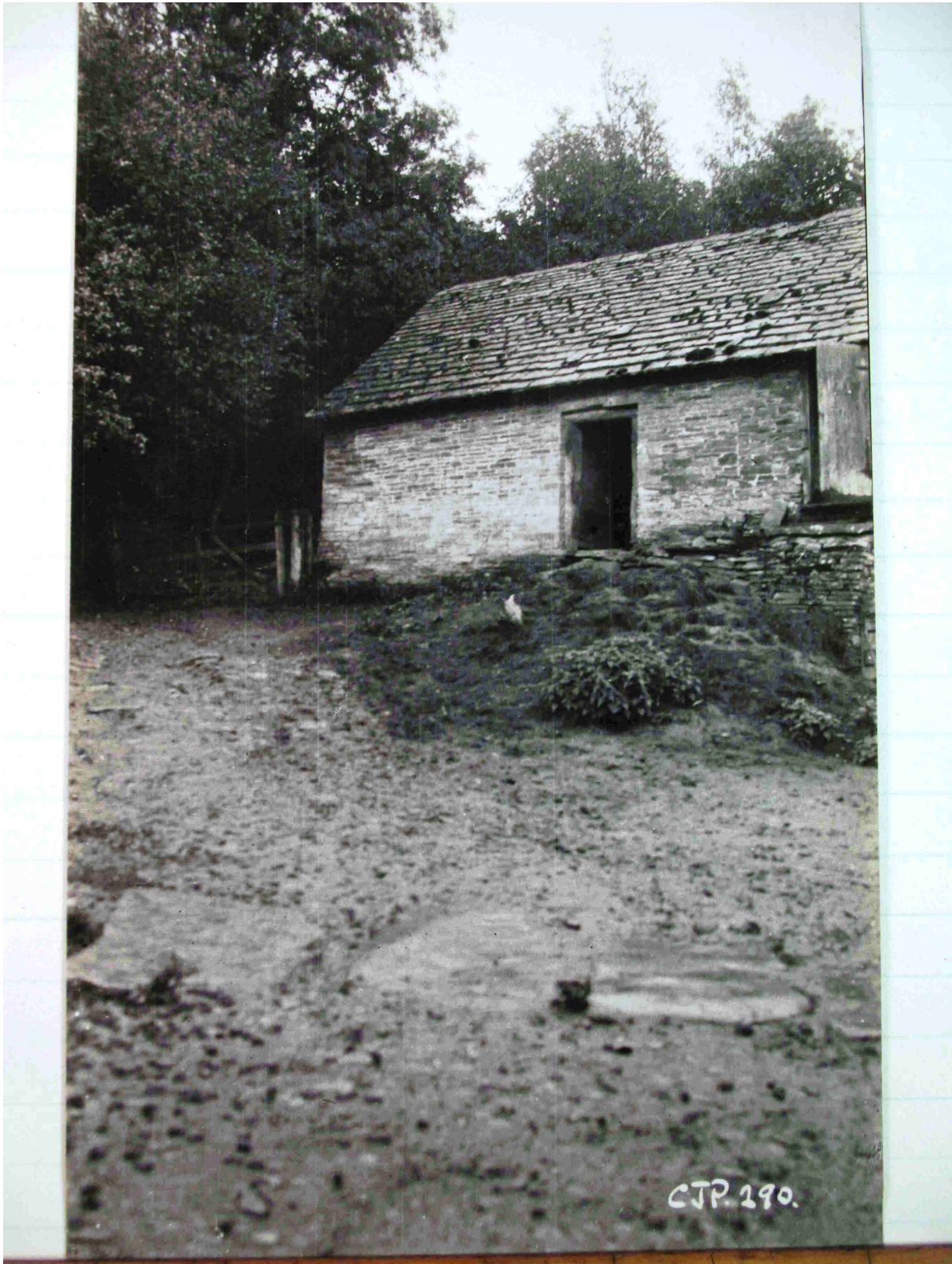
10. Bibliography :

11. No. of Ordnance Sheet (6-in.): *X LIII. N.E.*

12. Signature of Investigator. *A.T. Phillips*

# The History of Ewyas Lacy

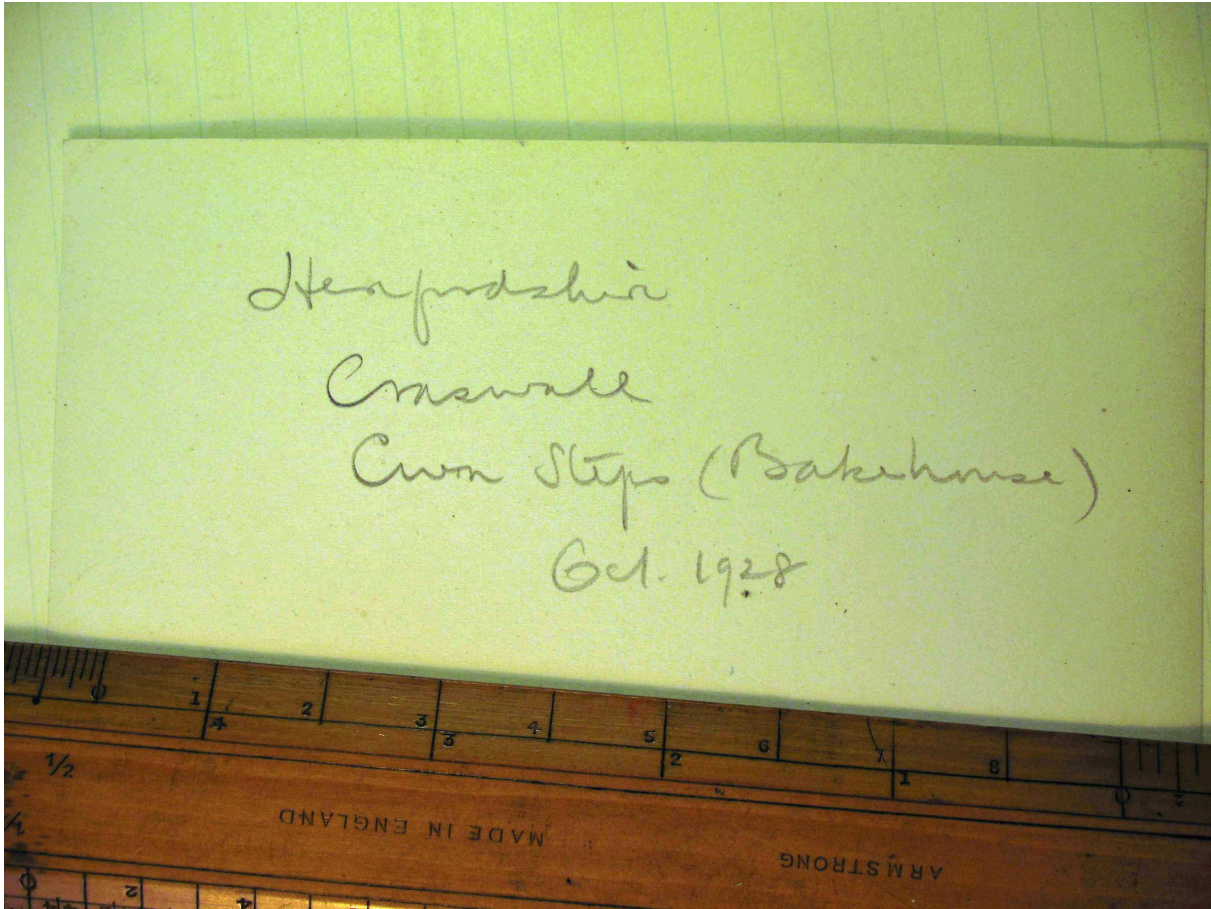
Document Record





# The History of Ewyas Lacy

Document Record



# The History of Ewyas Lacy

Document Record





# The History of Ewyas Lacy

## Document Record

**B**

**RECORD CARD FOR SECULAR MONUMENTS.**

(N.B.—Detail of special interest is to be entered here, but described fully on a separate card.)

1. **Name and situation of Monument** (with owner's Name and Address). *Court Farm, 1/4 mile*

2. **General appearance:** (a) No. of storeys. *Two - upper part in roof - and cellar*  
 (b) Building materials. *Local stone shaly rubble*  
 (c) Roofs. *Stone slate*

3. **Historical development** (with dates and small sketch plan). *A late 16<sup>th</sup> or early 17<sup>th</sup> century building of notched L shaped plan. wings running NW + SE. A cellar - an unusual feature locally - is cut below the SW end of the SE wing*

4. **Special features** (if any):

5. **Elevations:** (Beginning with the main front, and mentioning, in the following order:—(a) Walls; (b) Gables; (c) Doors; (d) Windows; (e) Chimneys; (f) Rainwater heads and pipes.)

*Walls of local stone rubble.*  
*NE end of SE wing - gabled - has a plain square chimney stack, stone. The entrance doorway at NW end of wall has an old oak chamfered frame and a nail studded door, while the small window lighting the staircase on the SE end of the wall - upper story - has an old oak frame with two mullions.*  
*SW wall has windows with modern frames including a gabled dormer window of four lights.*  
*The NW wing has an old oak door frame in its SW wall and the window NW of it has a modern frame in which is incorporated an old lintel which contains masonry for four square mullions set diagonally. An old square stone chimney over the NW end.*

6. **Grounds:** (a) Gardens; (b) Outbuildings; (c) Statuary, sundials, etc. *A barn of six bays - N of the house - retains three old crutch-type trusses (called 'blades' locally); other trusses later and of rough construction. The walls are now of stone but on the W. half of the S. side the stone wall is built within the barn-space leaving the original timber frame wall (in skeleton) standing within a low addition or aisle.*  
*Roof of pine slats*

County. *Radford T.*  
 Parish. *Creweville*  
 Sub-Commission. *London*  
 No. of Monument. *28*

(44,773). Wt. 13,734—20. 2000. 8/11. A.&E.W.

P.T.O.

# The History of Ewyas Lacy

## Document Record

7. **Interior:** (Disposition of rooms, if original, giving fittings as they occur (see list), beginning with the ground floor, following with the basement, and working up to the attics; staircases in the same manner.)

**Fittings:**

(Reminder list).

(1) Ceilings.

(2) Cupboards (fixed).

(3) Doors and Overdoors.

(4) Fireplaces and Mantel-pieces.

(5) Glass.

(6) Paintings.

(7) Panelling.

(8) Parquetry and floors.

(9) Plasterwork on internal walls.

(10) Roofs and beams (internal).

(11) Screens.

(12) Tapestries.

(13) Miscellaneous (e.g., carving, ironwork, locks, &c.).

SW wing (main block). This has an old timber-framed partition dividing the ground floor into two rooms - showing old studs but partly plastered - it is an old oak doorframe with chamfered posts and segmental lintel and an old battered door hung with two strap hinges with heart-shaped ends.

Each of the two rooms has two stop-chamfered ceiling beams and open timbered ceilings with rather rough square rafters.

The NE room has a large fireplace with modern grate - with an oak boss summer and next (SE) it a winding staircase of stone with thick oak treads. The doorway opening into it has is an old one of plain battens. NW of the fireplace is the entrance doorway.

In the N.W. wall is a doorway with old oak frame opening into the N.W. wing, and the upper part of this wall - visible in the N.W. wing - has a timber-framed gable end with a truss formed by a tie beam - cut through for a doorway - and two heavy principals.

The N.W. wing has lost its ground floor ceiling and upper floor.

Across it dividing the ground floor into two rooms is an old timber-framed partition - partly missing - with square posts or studs and narrow panels, and at right angles to it dividing the SE room into two is the skeleton of another old partition. The N.W. room retains two heavy stop-chamfered ceiling beams but no rafters. This room has a wide stone fireplace in its N.W. wall with a 7 inch oak lintel. Next (SW) it is an old doorway with an oak frame and segmental lintel probably opening into a staircase but this now choked up with rubbish.

The roof trusses are plain ones with heavy collar beams and principals; plaster filling.

The cellar under the SW half of SE wing also has old ceiling beams.

8. **Condition:** Good but floor missing in part of house

9. **Visited by (with dates):** J.W. Bloe May 11<sup>th</sup> 1927

10. **Bibliography:**

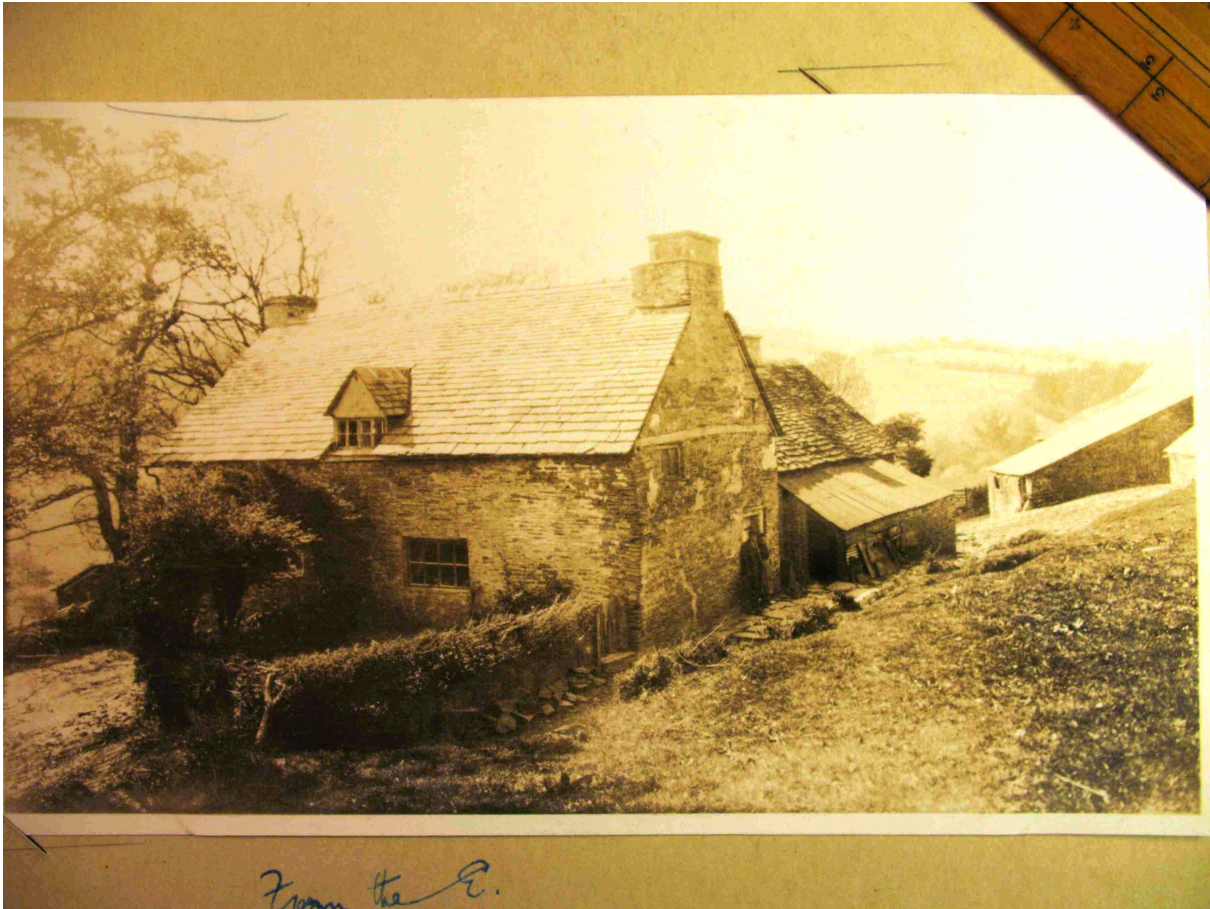
11. **No. of Ordnance Sheet (6-in.):** XXXVII NW.

12. **Signature of Investigator.** J.W. Bloe



# The History of Ewyas Lacy

Document Record





# The History of Ewyas Lacy

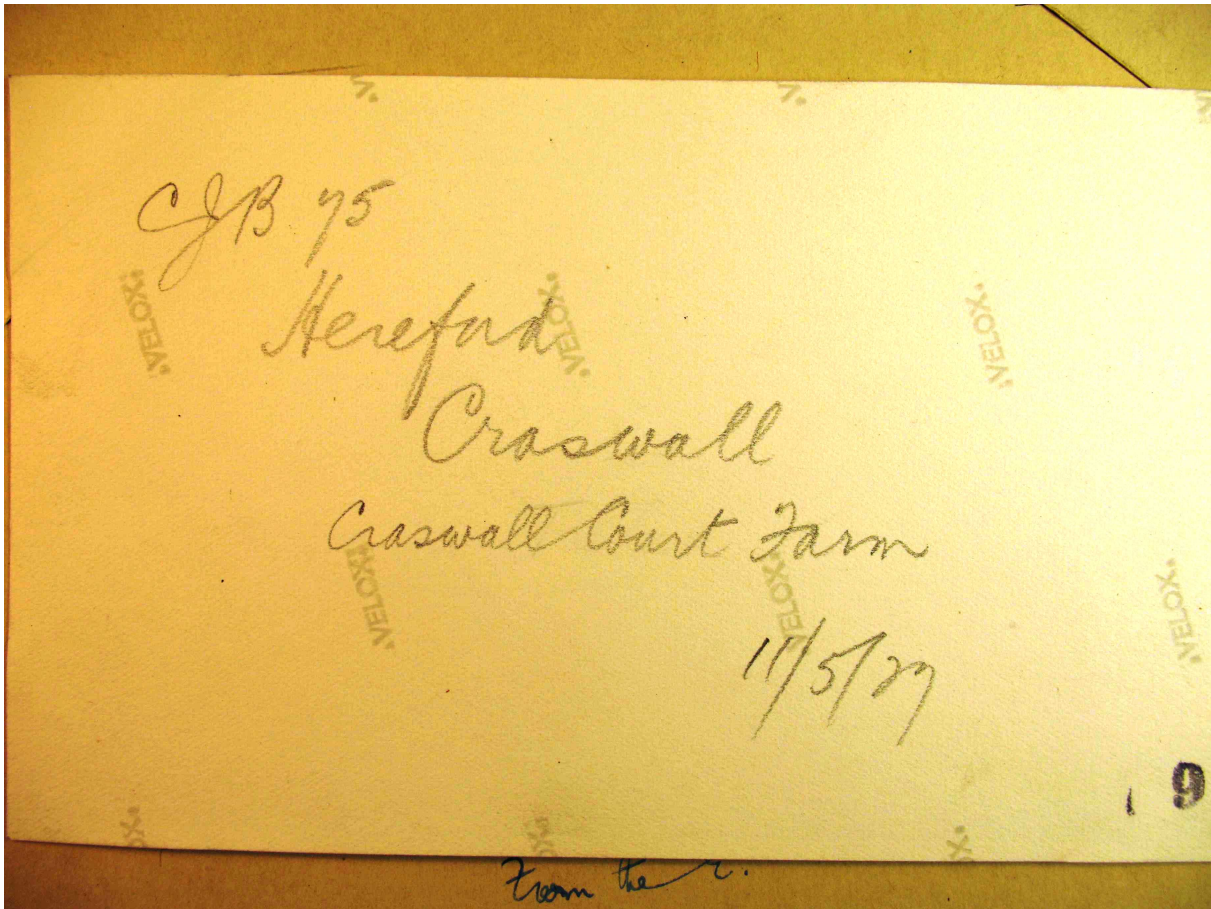
## Document Record





# The History of Ewyas Lacy

Document Record



**Observations:**

Index page is at [http://www.ewyaslacy.org.uk/doc.php?d=rs\\_ewy\\_0342](http://www.ewyaslacy.org.uk/doc.php?d=rs_ewy_0342)