



# The History of Ewyas Lacy

Document Record

**Held at:** National Archives

**Reference:** AE/1-4

**Source:** Original Survey Particulars

**Title:** Digital Archive: Royal Commission on Ancient and Historical Monuments - Photographs of original survey particulars, Part 4 of 13

**Place name:** Craswall, Llanveynoe, Longtown, Michaelchurch Escley

**Date:** 1920s

**Description:**

Part 4: Llanveynoe

This Digital Archive collection contains photographs of surviving parts of the initial surveys of Craswall, Michaelchurch Escley, Llanveynoe and Longtown carried out in the 1920's by the Royal Commission on Ancient and Historical Monuments. They comprise photographs, hand written survey notes and the annotated maps the surveyors used, which are held in the National Archives and formed the basis for the eventual RCAHM Reports on the buildings and structures in the parishes. The photographs have been made available by Chris Hodges, to whom we are most grateful.

**ELSG Ref RCAHM Records: Llanveynoe**

- 1 Llanveynoe Map1
- 2 Llanveynoe Map2
- 3 Earthworks 1
- 4 Earthworks 2
- 5 Earthworks sketch1
- 6 Earthworks sketch2
- 7 St Peters Church 1
- 8 St Peters Church photo1
- 9 St Peters Church 2
- 10 St Peters Church 3
- 11 St Peters Church photo2
- 12 St Peters Church photo3
- 13 St Peters Church photo4



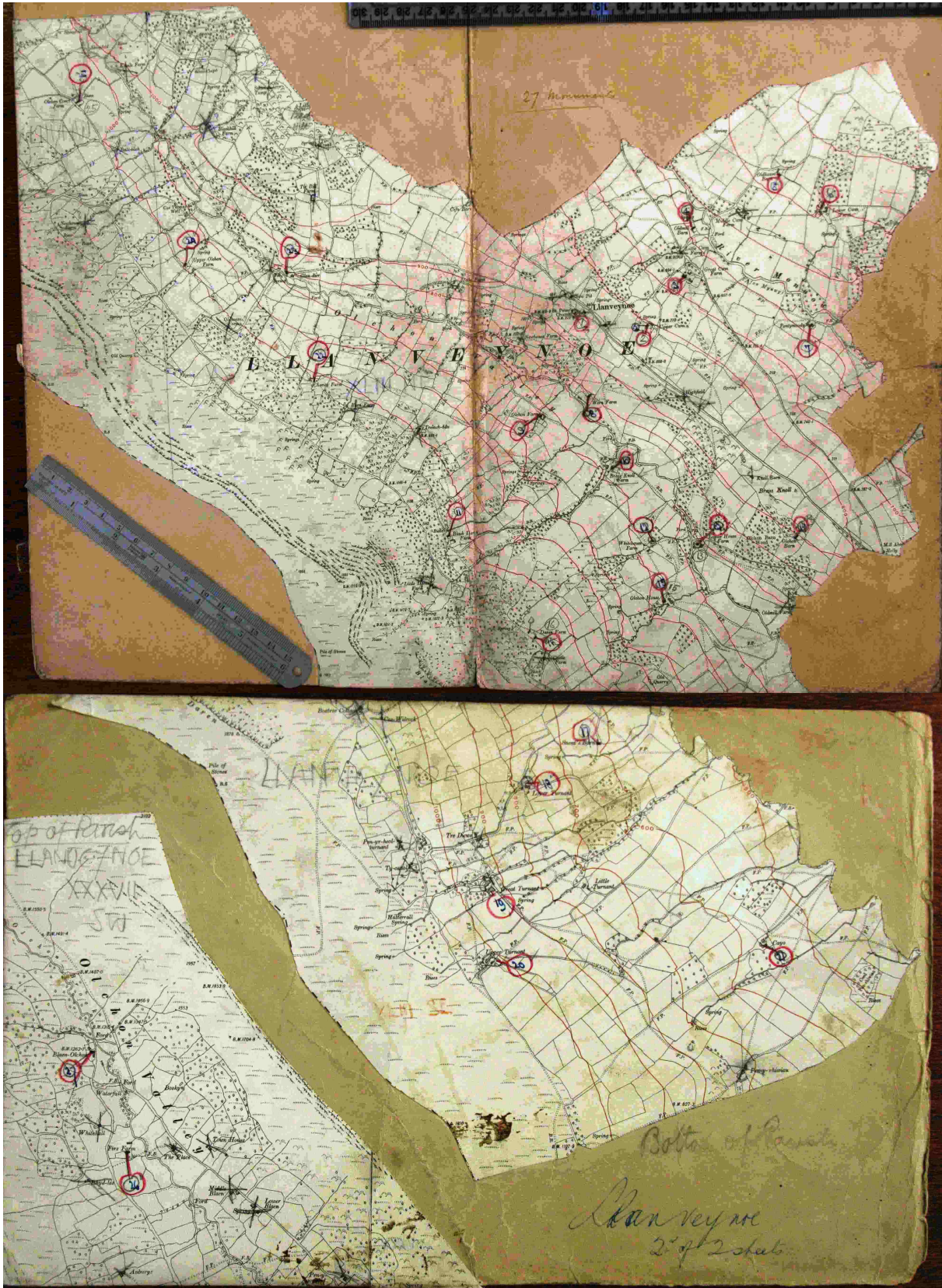
# The History of Ewyas Lacy

## Document Record

- 14 Upper Cwm 1
- 15 Upper Cwm 2
- 16 Upper Cwm photo
- 17 Great Cwm 1
- 18 Great Cwm 2
- 19 Great Cwm 3
- 20 Great Cwm photo1
- 21 Great Cwm photo2
- 22 Great Cwm photo3
- 23 Great Cwm photo4
- 24 Old Mill Barn 1
- 25 Old Mill Barn 2
- 26 Old House Barn 1
- 27 Old House Barn 1
- 28 Old House Barn 2
- 29 Old House Barn photo

# The History of Ewyas Lacy

## Document Record




# The History of Ewyas Lacy

## Document Record

(27,410). W.11,641—26. 1000. 7/10. A.&E.W.

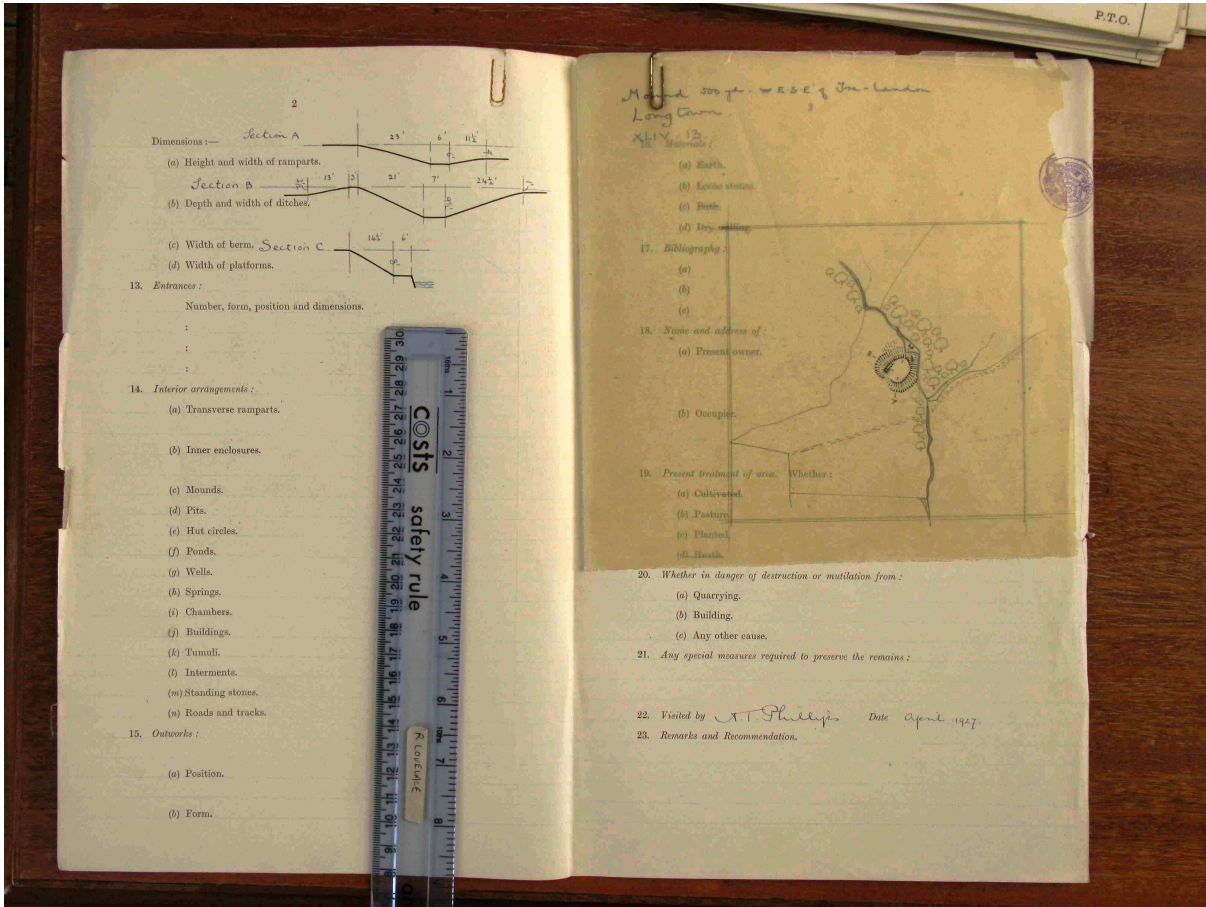
County. Herefordshire  
 Parish. Longtown  
 Sub-Commission. Earthworks  
 Number. 17

1. Classification. D (?)
2. Locality. 1½ miles E.S.E of St. Clodock Church & 260 yds. S.S.W of Pen-yr-hed
3. Latitude. Longitude. Farm on Parish Boundary.
4. No. of O. S. 1 in. 6 in. XLIV 25 in. 13.
5. Boundaries :
  - (a) Traversing area.
  - (b) Coincident with works.
6. Local name.
7. Soil.
8. Preservation. Poor.
9. Dimensions :
  - (a) Length. Approx. 50 yds.
  - (b) Width. 48 yds.
  - (c) Length (Internal). .. 30 yds.
  - (d) Width „ .. 22 yds.
10. Area :
  - (a) Internal. Approx. 1/7 acre
  - (b) Including defences. „ 1/4 acre
11. Levels :
  - (a) Highest point. Approx. 695 ft above O.D.
  - (b) Lowest point.
  - (c) Description of contours :— In slight dell abutting on bank  
 : of stream  
 :
12. Arrangements :
  - (a) Ramparts. A roughly oval & partly artificial mound with flat top, surrounded by a dry
  - (b) Ditches. ditch except on N.E. & E. when scarp abuts on stream & on S.W. when ditch
  - (c) Berms. is filled in. Then are traces of an inner
  - (d) Platforms. rampart on W. On N.E. the mound is approached from stream by a footway cut in scarp - this, however, is possibly modern.



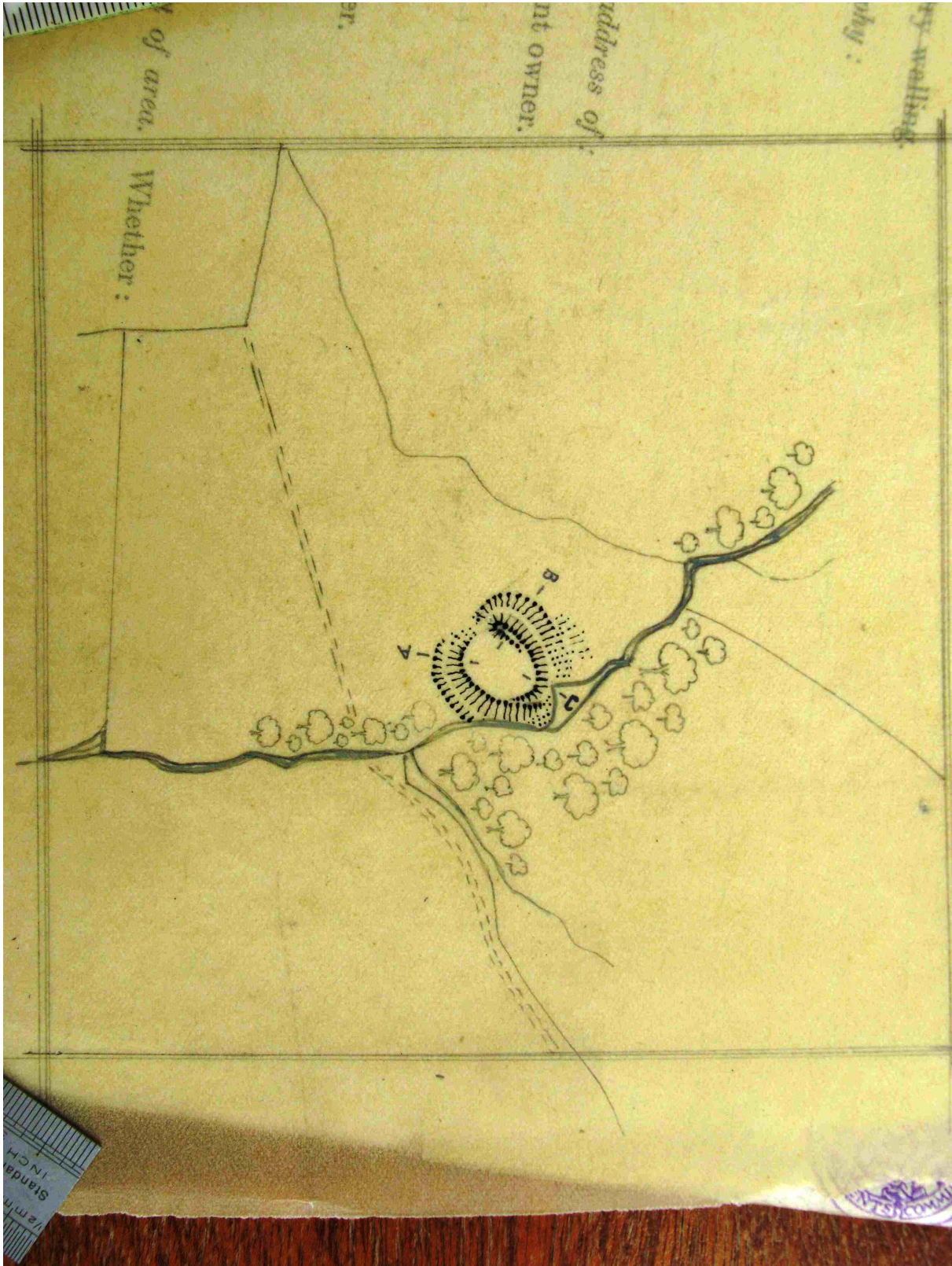
# The History of Ewyas Lacy

## Document Record



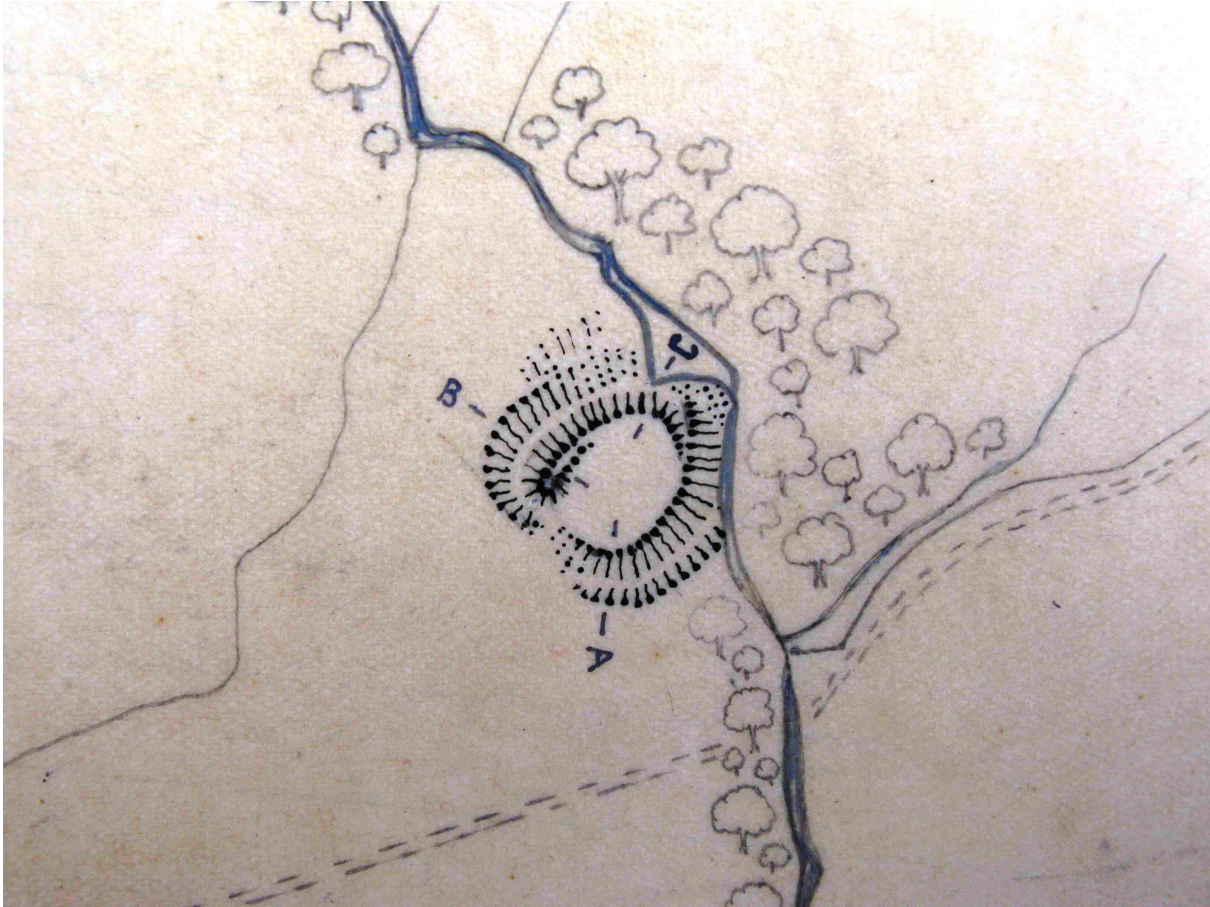
# The History of Ewyas Lacy

Document Record



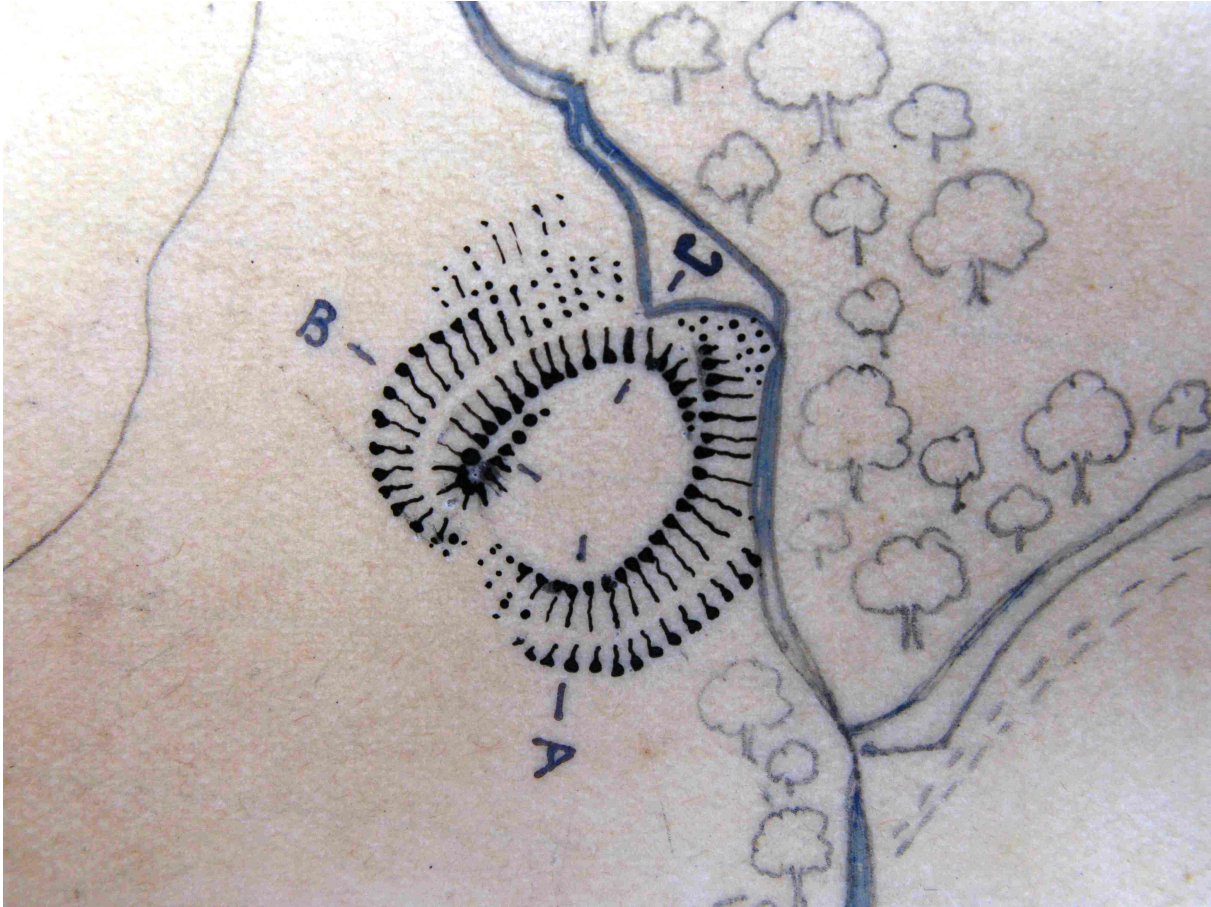
# The History of Ewyas Lacy

Document Record



# The History of Ewyas Lacy

Document Record





# The History of Ewyas Lacy

## Document Record

**A (1) RECORD CARD FOR ECCLESIASTICAL MONUMENTS.**

1. **DEDICATION.** *S. Peter*

2. **SITUATION.** *In a lonely position on a ridge E. of the Olchon Valley + Black Mountains: Near N. boundary of Parish, 2 3/4 miles NW by N. of S. Cledoches Church (the mother church)* No. of Ordnance Sheet (6 in.). *XLIII NE*

3. **STRUCTURAL MATERIAL,** of (1) Walls (2) Dressings (3) Roofs.

4. **HISTORICAL DEVELOPMENT,** with dates and plan (scale  $\frac{1}{2}$ ).

5. **COMPARATIVE VALUE AS A MONUMENT,** with mention of special features (if any).

6. **ARCHITECTURAL DESCRIPTION,** with measurements and dates (see order of description below).

7. **FITTINGS** (see order of description below).

8. **CHURCHYARD.**

9. **CONDITION.** *Good but the West wall (modern) is damp owing to exposed situation.*

10. **VISITED BY** (names with dates). *A.T. Phillips. J.W. Blue March 15<sup>th</sup> 1927*

11. **BIBLIOGRAPHY.** *Contrib. Arch. Assoc. - Arch. Cambrian 6<sup>th</sup> Series II. 1929. Only recorded at all in Monograph by J.R. Allen*

12. **SIGNATURE OF INVESTIGATOR.** *J.W. Blue*

(N.B.—Only 1, 2, 9, 10, 11 and 12, to be filled in here.)

**ORDER OF DESCRIPTION FOR PARTS OF CHURCHES AND THEIR FITTINGS.**  
(Generally: from E. to N. to S. to W. of details of each wall; if an E. or W. wall, from N. to S.; if a N. or S. wall, from E. to W.)

**ARCHITECTURAL DESCRIPTION,** in the following order:—

1. Chancel.	6. Central Tower.	11. South Aisle.
2. North Vestry.	7. North Transept.	12. West Tower.
3. North Chapel.	8. South Transept.	13. North Porch.
4. South Vestry.	9. Nave.	14. South Porch.
5. South Chapel.	10. North Aisle.	15. West Porch.

16. Crypts and Charnel Vaults, after the parts under which they occur.

17. Vaulting, Clearstoreys and Upper Storeys, with the parts to which they belong.

18. Abnormal Structural Features (e.g., Transeptal and Aisle Chapels, extra aisles, towers, etc.), immediately after the parts with which they are most nearly connected.

19. Roofs, grouped together but in the order of the parts to which they belong.

**DESCRIPTION OF DETAILS** under (1)—(19) to be in the following order, giving material wherever remarkable:—

**Walls:** (a) plinths (b) string-courses (c) buttresses (d) parapets. Each wall to be described from E. to W. or N. to S. with details as to arches, windows and doorways.

**Arches and Doorways:** (a) date (b) number of orders (c) shape of arch or head (d) label (e) responds or jambs.

**Windows:** (a) date (b) number of lights (c) type of tracery (d) shape of head (e) external label (f) external and internal jambs (g) rear arch (h) internal label.

**FITTINGS** (see list below): mark with a 'tick' ✓, when present; delete when absent; add the letter 'M' when later than 1714. Give cross references where necessary (e.g., from Brasses to Monuments).

1. Altars.	18. Fonts.	35. Poor-box.
2. Bells and bell-frames.	19. Font-covers.	36. Pulpits.
3. Biers.	20. Galleries and their staircases.	37. Rain-water heads.
4. Books.	21. Glass.	38. Recesses.
5. Brackets.	22. Helms, etc. (funeral).	39. Reredos.
6. Brasses and indents.	23. Hour-glasses and hour-glass stands.	40. Royal arms.
7. Chairs.	24. Images.	41. Screens.
8. Chests.	25. Inscriptions and scratchings.	42. Seating.
9. Clocks.	26. Lecterns.	43. Sedilia.
10. Coffins and Coffin lids.	27. Lockers.	44. Staircases (wooden).
11. Collecting boxes or shovels.	28. Monuments (with their recesses) and Floor-slabs.	45. Stalls.
12. Communion tables.	29. Niches.	46. Stoups.
13. Communion rails.	30. Organs and organ-cases.	47. Sundials.
14. Consecration crosses.	31. Paintings.	48. Tiles and Paving.
15. Cupboards.	32. Panelling.	49. Weathervane.
16. Doors.	33. Piscinae.	50. Miscellanea (architectural fragments not in situ and fittings of doubtful purpose).
17. Easter sepulchres.	34. Plate.	

Fittings of abnormal occurrence (e.g., Baptistry, Christatory, Candelabra) to be taken in their proper alphabetical order.

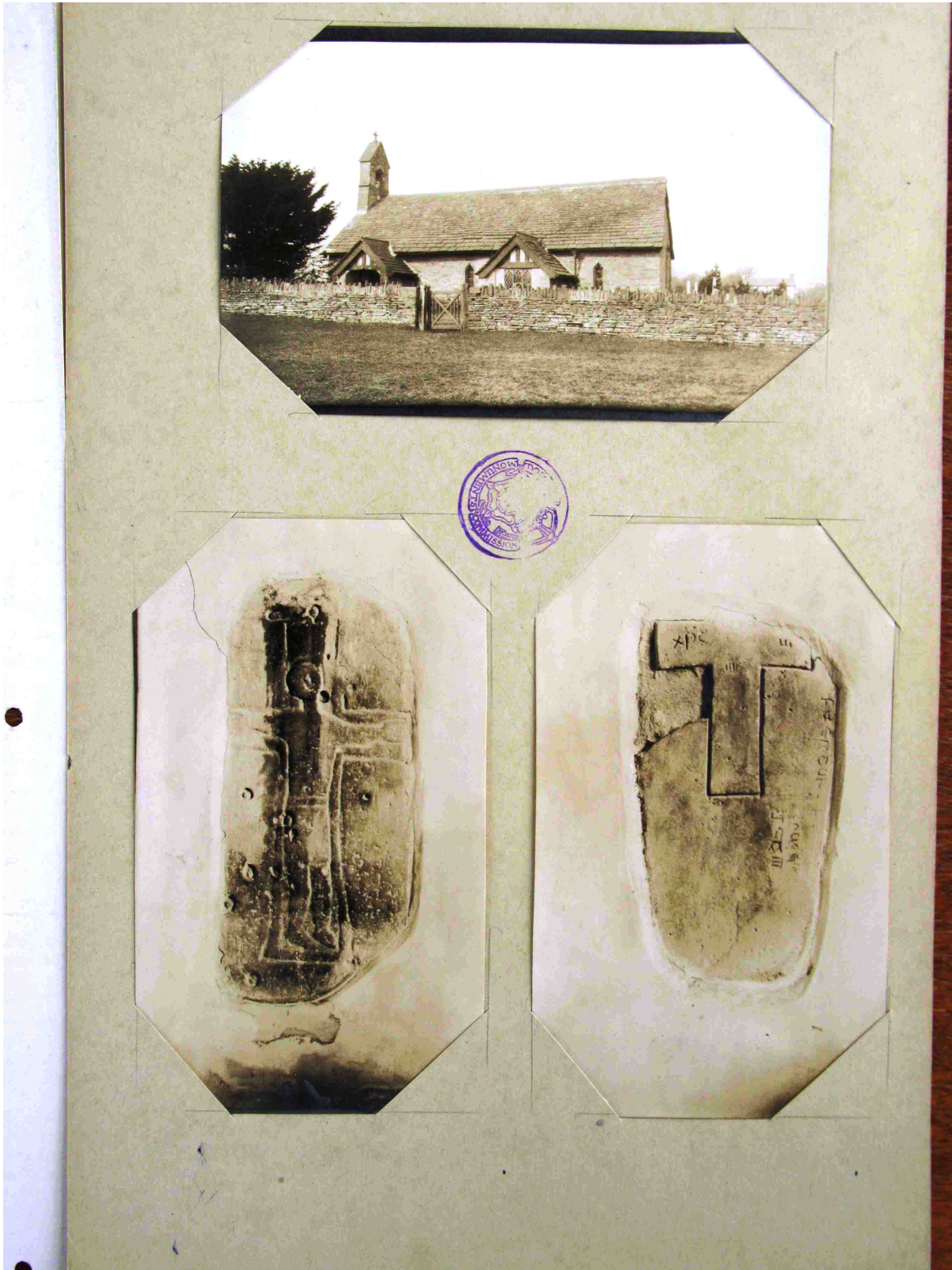
(66,210). Wks 25,741—32. 1000. 10/12. A.&E.W.

P.T.O.

County. *Wales*  
Parish. *Penarfon*  
Sub-Commission (Ecclesiastical).  
No. of Monument.

# The History of Ewyas Lacy

Document Record



# The History of Ewyas Lacy

Document Record

*S. Peters Church Llanvaynog. Chancel + Nave in one. S. Vestry, S. Porch*

*Situation*  
In a lonely position in the Black Mountains near N end of Parish

*Material*  
Sandy limestone rubble without dressed quoins at E. angles. W. wall modern  
Roof of stone slabs

*History*  
The church is of 13th century date as a tiny rectangular building.  
It was restored in \_\_\_\_\_ and was enlarged to the W. by about one third its length in 1912.

*Comp. Value*  
The building of small interest but the two widely caved olabs now set up in the Nave wall are curious. The external stone bench on the W. wall is an unusual feature which occurs also at Longtown and Craswell.

*Description*  
Chancel + Nave in one (  $43\frac{3}{4}$  ft. by  $17\frac{1}{4}$  ft. )

The E. window is of two cinquefoiled lights under a square head with an external label: apparently all modern.  
The wall is gabled.

In the N. wall two glazed windows each of one trefoiled light & both modern: they have shouldered huts in front.

Between them is a 13th c. lancet now blocked: the head in two stones has been grooved to imitate narrow courses of rubble

The western third of the N wall is modern the old W. angle showing is a partly straight joint and some filling in rubble of different character to the rest - E. of the (former) angle may possibly indicate a former window.

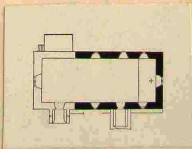
In S. wall are two modern windows like those opposite.

Between them the S. vestry probably was a porch formerly, or on the site of one: the doorway into it is modern

Further W. is a partly straight joint between old & new walling & W. of this a modern pointed doorway and porch  
along the S. wall outside is a stone bench from the E. end to the S. porch.

The W. wall with a treaced hoodlight window and a bell cote for one bell is all modern.

The Roofs modern.

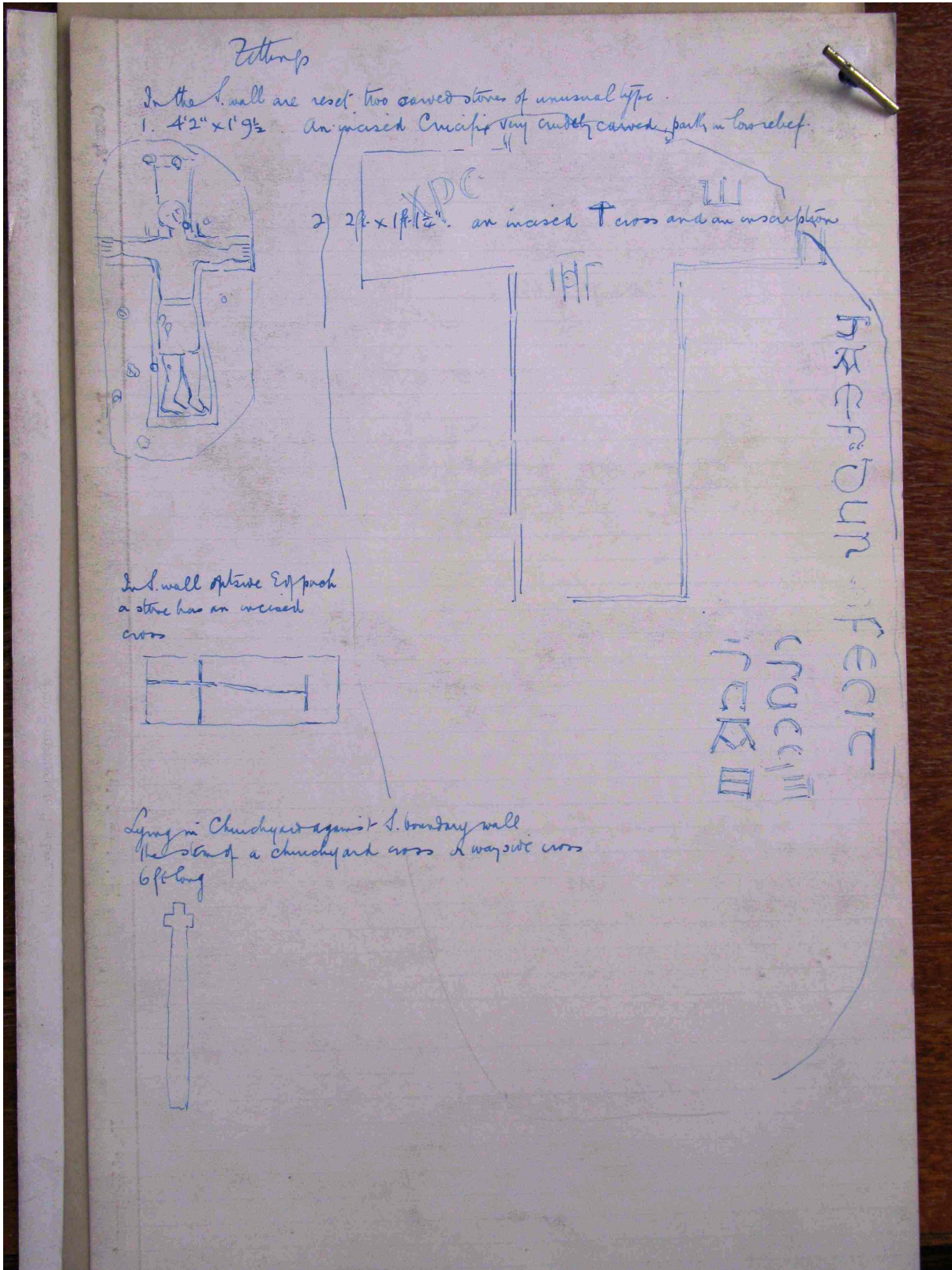


(85,633), Wt. 25,694—42, 1250, 10/13. A.&E.W.  
(102,670) ,, 17,481—57, 5000, 8/14. ,,

County. *Wales*  
Parish. *Llanvaynog*  
Sub-Commission. *Welsh*  
No. of Monument.

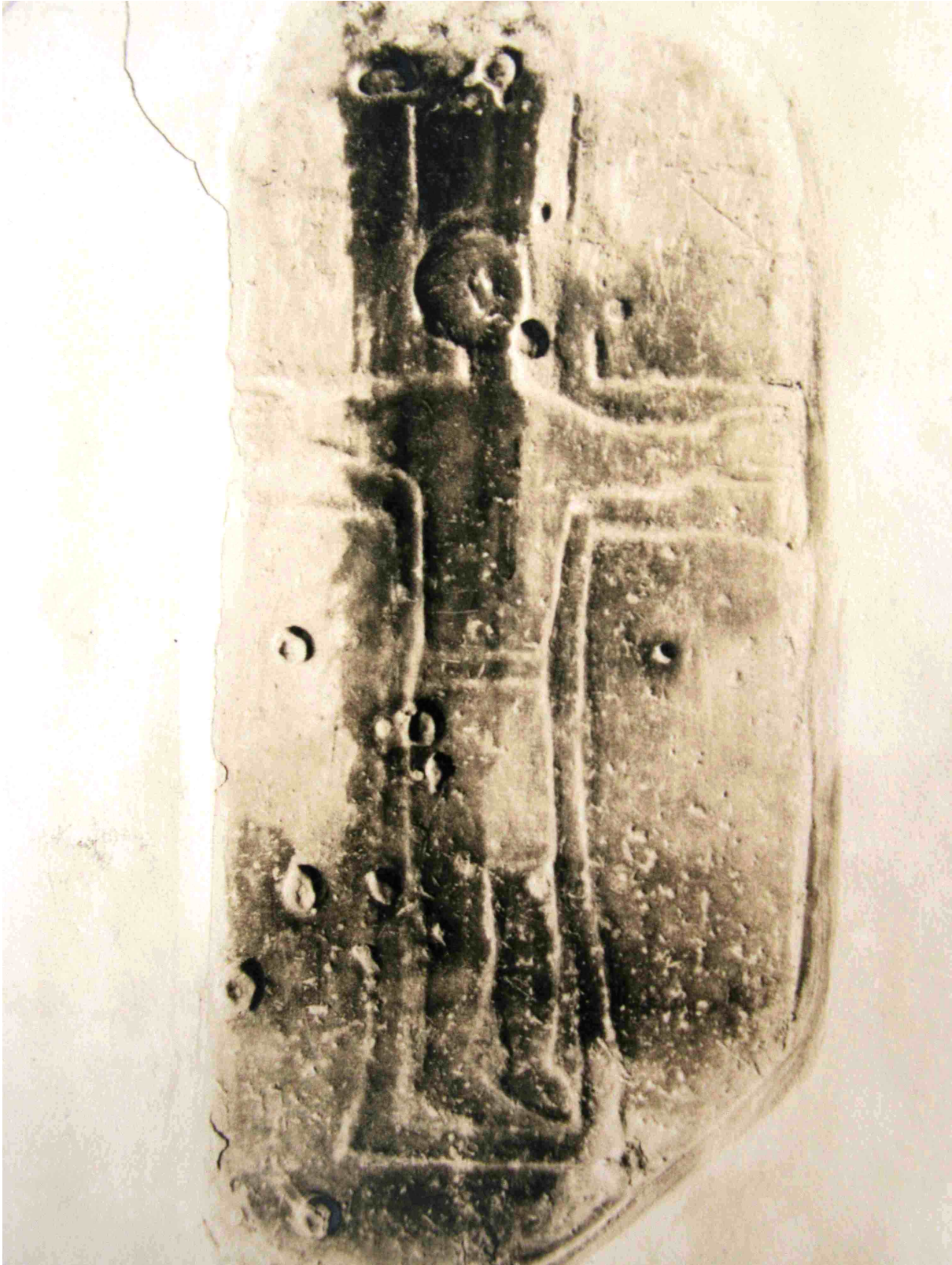
# The History of Ewyas Lacy

Document Record



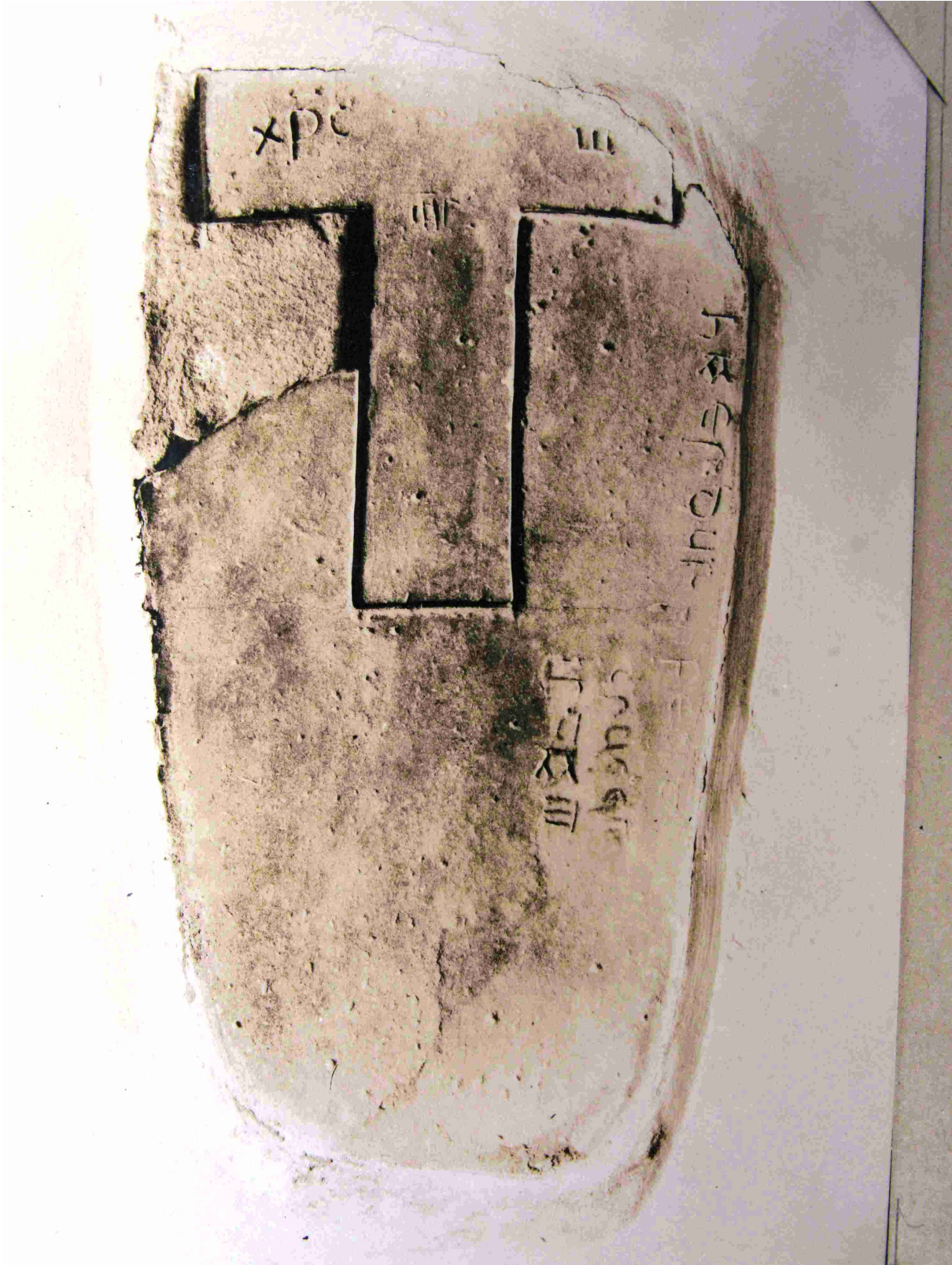
# The History of Ewyas Lacy

Document Record



# The History of Ewyas Lacy

Document Record



# The History of Ewyas Lacy

Document Record



# The History of Ewyas Lacy

## Document Record

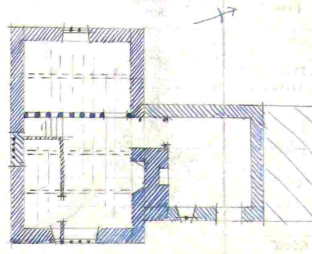
**RECORD CARD FOR SECULAR MONUMENTS.**

(N.B.—Detail of special interest is to be entered here, but described fully on a separate card.)

1. Name and situation of Monument (with owner's Name and Address). *Upper Court*

2. General appearance: (a) No. of storeys. *S wing - 2 attic. N wing - 1*  
 (b) Building materials. *Stone rubble.*  
 (c) Roofs. *Stone slates. N wing - Modern slates.*

3. Historical development (with dates and small sketch plan).  
*A 16th house. N wing added c. 1700.  
 In modern times an addition has been built on against N wall of N wing.*



4. Special features (if any).

5. Elevations: (Beginning with the main front, and mentioning, in the following order:—(a) Walls; (b) Gables; (c) Doors; (d) Windows; (e) Chimneys; (f) Rainwater heads and pipes.)

*E. Elev. Gabled. Exposed timbers. On ground floor is a slight, on 1st floor a slight + to attic a slight blocked window. All of these windows are late 18th c. & have flag stone labels above them. In N wing is a 2 light window of type c. 1700.*

*S. Elev. Blocked 5 light diamond mullioned window on ground floor with label above.*

*W. Elev. Gabled. Wall re-built. late 18th c. 3 light window on ground floor & 4 light on 1st floor.*

*N. Elev. N wing concealed by mod. barn. House has blocked window on 1st floor.*

*The rectangular chimney stack has projecting cap to base + 2 attached square stone shafts with mod brick top.*

6. Grounds: (a) Gardens; (b) Outbuildings; (c) Statuary, sundials, etc.

County. *Shropshire*  
 Parish. *Blainey*  
 Sub-Commission. *Seaton*  
 No. of Monument. *10*

P.T.O.

(89,102). Wt. 33,349—47. 500. 12/13. A.&E.W.  
 2691—53. 6000. 5/14.



# The History of Ewyas Lacy

## Document Record

7. **Interior:** (Disposition of rooms, if original, giving fittings as they occur (see list), beginning with the ground floor, following with the basement, and working up to the attics: staircases in the same manner.)

**Fittings:**

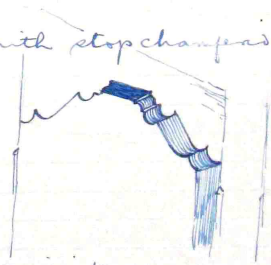
(Reminder list).

- (1) Ceilings.
- (2) Cupboards (fixed).
- (3) Doors and Overdoors.
- (4) Fireplaces and Mantel-pieces.
- (5) Glass.
- (6) Paintings.
- (7) Panelling.
- (8) Parquetry and floors
- (9) Plasterwork on internal walls.
- (10) Roofs and beams (internal).
- (11) Screens.
- (12) Tapestries.
- (13) Miscellaneous (e.g., carving, ironwork, locks, &c.).



On ground floor is framed partition with stop chamfered posts or wood panels between.  
 In same partition is doorway with head of framing moulded as in sketch on same is hung on strap hinges a battered door.

Ceilings of ground floor rooms have stop chamfered beams exposed joints.



8. **Condition:** Fair.
9. **Visited by (with dates):** A.T. Phillips, May 1927.
10. **Bibliography:**
11. **No. of Ordnance Sheet (6-in.):** XLIII. N.E.
12. **Signature of Investigator:** A.T. Phillips

# The History of Ewyas Lacy

Document Record



# The History of Ewyas Lacy

## Document Record

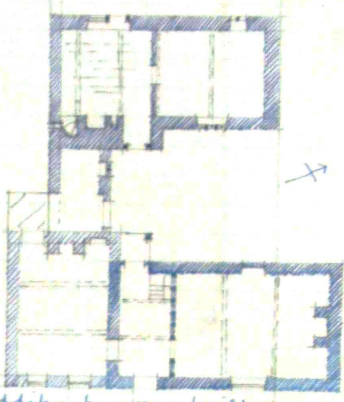
(N.B.—Detail of special interest is to be entered, re, but described fully on a separate card.)

County. *Herefordshire* Parish. *Llanymyneon* Sub-Commission. *Beaver* No. of Monument. *6*

1. Name and situation of Monument (with owner's Name and Address). *Great Cwm 7  
600 yds. N.N.E. of Church (half used as an house actually they are  
2 separate houses with no intercommunication)*

2. General appearance: (a) No. of storeys. *E house 1 rather wing to same 2 rather. W house 2.*  
(b) Building materials. *Stone rubble.*  
(c) Roofs. *Stone slates.*

3. Historical development (with dates and small sketch plan).  
*The E house is 16th c. The wing to same  
may originally have been same date but  
would seem more probably to have been  
added later in any case was entirely  
re-modelled & heightened in the 18th c.  
The W house was built late in 17th c.  
Between the two houses, & connecting  
same, is a low 18th c wash house.*



4. Special features (if any). *the S. wall of which  
would appear to have existed been  
built at the same time as the W house  
while the N wall is <sup>modern</sup> ~~18th c~~. A modern addition has been built in  
angle between wash house & E house.*

5. Elevations: (Beginning with the main front, and mentioning, in the following order—(a) Walls;  
(b) Gables; (c) Doors; (d) Windows; (e) Chimneys; (f) Rainwater heads and pipes.)

*E. Elev. Stone rubble. Hipped gable end. Dome window. Battens base  
(W house) Projecting portico galled. Square shaft with projecting  
cap. On ground floor is a 3 light window*

*N. Elev. Gabled Battens base. Square stack with projecting cap.  
(W house) Gabled. (Connecting washhouse) Has 2 light window  
similar to that described above.*

*W. Elev. Blocked window. Wing has hipped gable the chimney  
stack being re-built above roof level. There is a blocked  
window on both 1st floor rather. There is a porch with  
lean-to roof rangle post stop chamfered. Downway  
has moulded frame (17th c.)  
(W house) On ground floor is a 2 light window with chamfered  
frame & mullion + a 3 light similar window on  
1st floor.*

*S. Elev. There is a blocked window modern lean-to*

6. Grounds: (a) Gardens; (b) Outbuildings; (c) Statuary, sundials, etc.

(83,102) W. 12,245—47. 506. 12/12. A.A.R.W.  
(97,132) .. 5221—52. 0000. 2/14. ..

P.T.O.

# The History of Ewyas Lacy

## Document Record

**D. RECORD CARD FOR SECULAR MONUMENTS.**

(N.B.—Detail of special interest is to be entered here, but described fully on a separate card.)

1. **Name and situation of Monument** (with owner's Name and Address). *Great Cwm 7  
600 yds. E.N.E. of Church. (half used as one house actually they are 2 separate houses with no intercommunication)*

2. **General appearance:** (a) No. of storeys. *E house 1 + attic. Wing to same 2 + attic. W house 2.*  
 (b) Building materials. *Stone rubble.*  
 (c) Roofs. *Stone slates.*

3. **Historical development** (with dates and small sketch plan).  
*The E house is 16th c. The wing to same may originally have been same date but would seem more probably to have been added later in any case was entirely re-modelled & heightened in the 18th c. The W house was built late in 17th c. Between the two houses, & connecting same, is a low 1st floor wash house, which would appear to have existed at the same time as the W house while the N wall is modern. A modern addition has been built in angle between wash house & wing of E house.*

4. **Special features** (if any). *the S. wall of which would appear to have existed at the same time as the W house while the N wall is modern.*

5. **Elevations:** (Beginning with the main front, and mentioning, in the following order: (a) Walls; (b) Gables; (c) Doors; (d) Windows; (e) Chimneys; (f) Rainwater heads and pipes.)

*E. Elev. Stone rubble. Hipped gable. Dome window. Battled base (W house) Projecting portico gabled. Square shaft with projecting cap. On ground floor is a 3 light window.*

*N. Elev. Gabled. Battled base. Square stack with projecting cap. (W house) Gabled. (Connecting washhouse) Has 2 light window similar to that described above.*

*W. Elev. Blocked window. Wing has hipped gable the chimney stack being re-built above roof level. There is a blocked window on both 1st floor & attic. There is a porch with lean-to roof & angle post stop chamfered. Downway has moulded frame (17th c.) (W house) On ground floor is a 2 light window with chamfered frame & mullion & a 3 light similar window on 1st floor.*

*S. Elev. There is a blocked window & modern lean-to.*

6. **Grounds:** (a) Gardens; (b) Outbuildings; (c) Statuary, sundials, etc.

County. *Herefordshire* Parish. *Lawley* Sub-Commission. *Sawley* No. of Monument. *5*

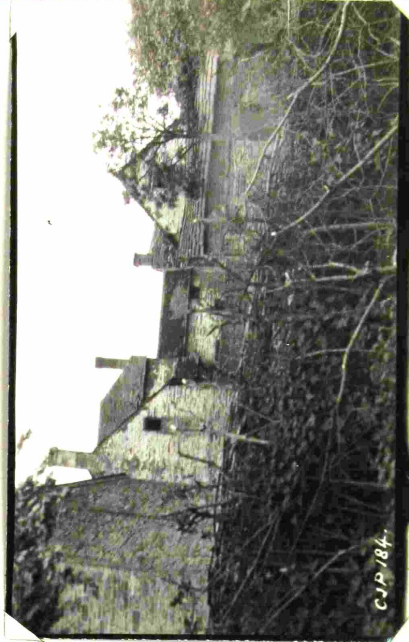
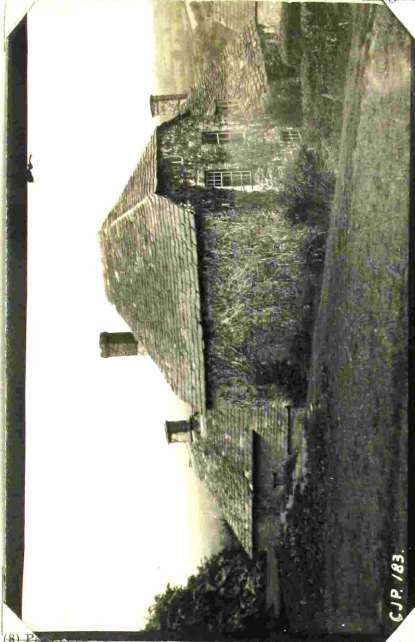
(89,102). Wt. 33,349—47. 500. 12/13. A.&E.W.  
 (97,153). „ 5921—53. 6000. 5/14. „

P.T.O.

# The History of Ewyas Lacy

## Document Record

7. Interior: (Disposition of rooms, if original, giving fittings as they occur (see list), beginning with the ground floor, following with the basement and working up to the attics.)



(8) Roofs and floors

(9) Plasterwork on internal walls.

(10) Roofs and beams (internal).

(11) Screens.

(12) Tapestries.

(13) Miscellaneous (e.g., carving, ironwork, locks, &c.).

In E house is framed partition between hall & N room with stop chamfered posts wood panels between same.

In same is a battered door with flush moulded edges to planks, &c.

Ceiling of ground floor rooms in E house have exposed stop chamfered beams, those in N room having 'spur' stops those in wing having moulded stops.

Ceilings of rooms in W house also have stop chamfered beams, but in this case they are plain stops.

8. Condition: Fair.

9. Visited by (with dates): A.T. Phillips. May 1927.

10. Bibliography:

11. No. of Ordnance Sheet (6-in.): XLIII. N.E.

12. Signature of Investigator: A.T. Phillips

# The History of Ewyas Lacy

Document Record



# The History of Ewyas Lacy

Document Record



# The History of Ewyas Lacy

Document Record





# The History of Ewyas Lacy

Document Record



# The History of Ewyas Lacy

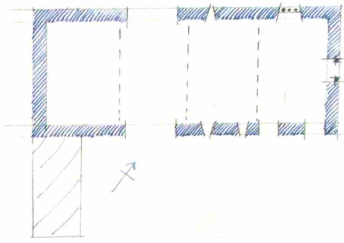
## Document Record

**B. RECORD CARD FOR SECULAR MONUMENTS.**  
(N.B.—Detail of special interest is to be entered here, but described fully on a separate card.)

1. Name and situation of Monument (with owner's Name and Address). *Barn & Old Mill*  
*Oldmill Barn on W bank of R. Monnow 1/2 mile N.E. of church.*

2. General appearance: (a) No. of storeys.  
(b) Building materials.  
(c) Roofs.

3. Historical development (with dates and small sketch plan).  
*Built 1666.*



4. Special features (if any).

5. Elevations: (Beginning with the main front, and mentioning, in the following order:—(a) Walls; (b) Gables; (c) Doors; (d) Windows; (e) Chimneys; (f) Rainwater heads and pipes.)

*S. Elev. Stone rubble. Wide doorway, two small doorways both of which have stop chamfered wood frames with projecting slab stone labels. In head of door frame to more W of the two small doorways is cut the date 1666. There are two slit windows.*

*E. Elev. Gabled. Rubble stone partly re-built. There is a battened door.*

*N. Elev. Stone rubble. Wide doorway, a slit window or a light diamond mullioned window (only one mullion remaining) with stone slab label. The head of doorway is slightly above eaves level roof is raised above same.*

*W. Elev. Gabled.*

6. Grounds: (a) Gardens; (b) Outbuildings; (c) Statuary, sundials, etc.

County. *Herefordshire*  
Parish. *Monnow*  
Sub-Commission. *Severn*  
No. of Monument. *(H)*

(89,102). W.L.33,349—47. 500. 12/13. A.&E.W.  
(97,153). .. 5621—53. 4000. 5/14. ..

P.T.O.

# The History of Ewyas Lacy

## Document Record

7. Interior: (Disposition of rooms, if original, giving fittings as they occur (see list), beginning with the ground floor, following with the basement, and working up to the attics: staircases in the same manner.)

**Fittings:**

(Reminder list).

(1) Ceilings.

(2) Cupboards (fixed).

(3) Doors and Overdoors.

(4) Fireplaces and Mantel-pieces.

(5) Glass.

(6) Paintings.

(7) Panelling.

(8) Parquetry and floors

(9) Plasterwork on internal walls.



(10) Roofs and beams (internal).

(11) Screens.

(12) Tapestries.

(13) Miscellaneous (e.g., carving, ironwork, locks, &c.).



There are 4 timber trusses. The two western ones being of type  while other two are of type 

8. Condition: *Bad.*

9. Visited by (with dates): *A.T. Philips. May 1927.*

10. Bibliography:

11. No. of Ordnance Sheet (6-in.): *XLIII. N.E.*

12. Signature of Investigator. *A.T. Philips*

# The History of Ewyas Lacy

## Document Record

B.

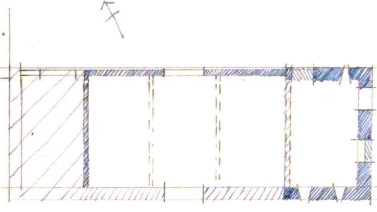
### RECORD CARD FOR SECULAR MONUMENTS.

(N.B.—Detail of special interest is to be entered here, but described fully on a separate card.)

- Name and situation of Monument** (with owner's Name and Address). *Old House Barn*  
*3/4 mile N.E. of Church.*
- General appearance:** (a) No. of storeys. *1* *basement under E bay.*  
(b) Building materials. *Timber frame on stone plinth + stone rubble walls.*  
(c) Roofs. *Stone slates.*

- Historical development** (with dates and small sketch plan).

*A 17th c. barn. Probably c. 1700 the most E bay was re-built with stone walls with 'half basement' under. In modern times the S. wall of remainder has been re-built in stone + modern addition built on at W end.*



- Special features** (if any).

- Elevations:** (Beginning with the main front, and mentioning, in the following order:—(a) Walls; (b) Gables; (c) Doors; (d) Windows; (e) Chimneys; (f) Rainwater heads and pipes.)

*N. Elev. E end. rubble stone. Remainder timber framed on stone plinth. Upper panels of framing are filled with wide interlaced laths. In E wall is a blocked door on timber framed part is a double door.*  
*E. Elev. Stone rubble; exposed timbers, + gabled. There is a blocked window on ground floor level.*  
*S. Elev. In E bay are two slit windows + the part of a cross partition is exposed. Remainder re-built in stone.*  
*W. Elev. Gabled weather boarded. lower part hidden by late 18th c. addition.*

- Grounds:** (a) Gardens; (b) Outbuildings; (c) Statuary, sundials, etc.

*Immediately N.E. of this barn is another barn which has been re-built but which incorporates a 17th c. timber framed wall + gable at its N.E. end.*

(80,102). Wt. 33,349—47. 500. 12/13. A.&E.W.  
(97,153). „ 5821—53. 6000. 5/14. „

P.T.O.

County. *Herefordshire*  
Parish. *Stanningtone*  
Sub-Commission. *Seaton*  
No. of Monument. *5*

# The History of Ewyas Lacy

## Document Record

7. Interior: (Disposition of rooms, if original, giving fittings as they occur (see list), beginning with the ground floor, following with the basement, and working up to the attics: staircases in the same manner.)

**Fittings:**

(Reminder list).

(1) Ceilings.

(2) Cupboards (fixed).

(3) Doors and Overdoors.

(4) Fireplaces and Mantel-pieces.

(5) Glass.

(6) Paintings.

(7) Panelling.

(8) Parquetry and floors

(9) Plasterwork on internal walls.

(10) Roofs and beams (internal).

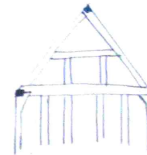
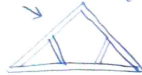
(11) Screens.

(12) Tapestries.

(13) Miscellanea (e.g., carving, ironwork, locks, &c.).



The two cross-partitions are of form →  
while two roof trusses are of type →



8. Condition: *Poor.*

9. Visited by (with dates): *J.T. Phillips . May 1927*

10. Bibliography:

11. No. of Ordnance Sheet (6-in.): *XIII. N.E.*

12. Signature of Investigator. *J.T. Phillips*

# The History of Ewyas Lacy

Document Record



**Observations:**

Index page is at [http://www.ewyaslacy.org.uk/doc.php?d=rs\\_ewy\\_0342](http://www.ewyaslacy.org.uk/doc.php?d=rs_ewy_0342)